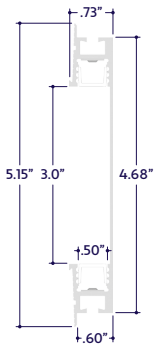


### GENERAL FEATURES

|                            |                                                                                           |
|----------------------------|-------------------------------------------------------------------------------------------|
| <b>Applications</b>        | Mud-In, Accent, Decorative, Surface, Recessed Lighting                                    |
| <b>Lens</b>                | 50% Semi-Frosted or 100% Frosted                                                          |
| <b>Viewing Angle</b>       | 120°                                                                                      |
| <b>Length</b>              | Built to Order (+/- 1/8" Tolerance)                                                       |
| <b>Construction</b>        | Aluminum Extrusion                                                                        |
| <b>Field Cutting</b>       | Dry and Damp Location Field Cuttable                                                      |
| <b>Weight</b>              | 0.81 lbs per foot                                                                         |
| <b>Mounting</b>            | Mud-In                                                                                    |
| <b>Listing</b>             | Dry or Damp Location<br>UL2108, 67.1.9, 60.4, CSA C22.2 #9<br>UL8750, CSA250              |
| <b>Driver</b>              | Remote (Sold Separately)                                                                  |
| <b>Closet Rating</b>       | Up to 3.6 Watts per Foot Maximum                                                          |
| <b>Temperature Ratings</b> | Operating / Startup: -20° to 48°C (-4° to 120°F)<br>Storage: -40° to 76°C (-40° to 170°F) |
| <b>Installation Link</b>   |                                                                                           |

### END VIEWS / DIMENSIONS



### MOUNTING OPTION



Mud-In / Plaster

### ELECTRICAL

|                                           |                                                                 |
|-------------------------------------------|-----------------------------------------------------------------|
| <b>Dimming</b>                            | 0-10V, Casambi Ready                                            |
| <b>Maximum Run (Class 2 Applications)</b> | 14' (6.5W), 17' (5.5W), 21' (4.5W), 26' (3.6W), 36'(1.5W, 2.5W) |
| <b>Luminaire Voltage</b>                  | 24VDC                                                           |

### SPECIFY PRODUCT CODE | CHOOSE FROM DROP DOWNS

| Series                               | Lens                                    | Watts per Foot* <sup>1</sup> | Dimming                   | LED                                    | Listing       | Finish                   | Luminaire Length                                    |
|--------------------------------------|-----------------------------------------|------------------------------|---------------------------|----------------------------------------|---------------|--------------------------|-----------------------------------------------------|
| <b>A8-ZYPO-FWD</b>                   |                                         |                              |                           | <b>DWM</b>                             |               | <b>WH</b>                |                                                     |
| ZYPO Flush Wall Duo<br>(A8-ZYPO-FWD) | 50% Semi-Frosted Lens<br>(SF)           | 1.5 Watts (1.5W)             | 0-10V: 100% - 1%<br>(10V) | Dim to Warm:<br>3000K - 2000K<br>(DWM) | Indoor (DAMP) | White* <sup>2</sup> (WH) | Specify Length<br>in Feet & Inches<br>Example: 7'8" |
|                                      |                                         | 2.5 Watts (2.5W)             |                           |                                        |               |                          |                                                     |
|                                      | 100% Frosted Lens:<br>Line of Light (F) | 3.6 Watts (3.6W)             | Casambi Ready<br>(CAS)    |                                        |               |                          |                                                     |
|                                      | 4.5 Watts (4.5W)                        |                              |                           |                                        |               |                          |                                                     |
|                                      | 5.5 Watts (5.5W)                        |                              |                           |                                        |               |                          |                                                     |
| 6.5 Watts (6.5W)                     |                                         |                              |                           |                                        |               |                          |                                                     |

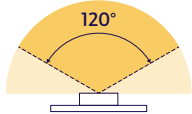
\*<sup>1</sup> Watts per Foot based on wattage of both LED sources within luminaire combined.

\*<sup>2</sup> Default finish is White (WH) if left blank.

### LAMP FEATURES

|           |                     |
|-----------|---------------------|
| Lamp Type | Dim to Warm LEDs    |
| CRI       | > 90                |
| Efficacy  | 103 Lumens per Watt |

### BEAM ANGLE



120° x 120° Beam

### LAMP SPECIFICATIONS

| Lamp Number | Correlated Color Temperature (CCT) | Dimming Percentage | L70 LED Life |
|-------------|------------------------------------|--------------------|--------------|
| DWM         | 2000 Kelvin                        | 2%                 | 60,000 hrs.  |
|             | 2400 Kelvin                        | 70%                |              |
|             | 2700 Kelvin                        | 85%                |              |
|             | 3000 Kelvin                        | 100%               |              |

### LENS / OPTICS APPEARANCE



50% Semi-Frosted Lens (SF)  
Slight Diode Image  
12.5% Light Loss



100% Frosted Lens (F)  
No Diode Image: Line of Light  
25% Light Loss

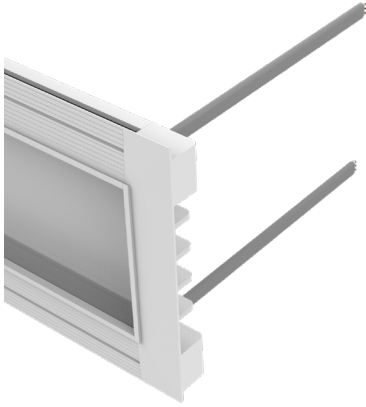
### DRIVERS

| Dimming Selection | Product Code | Link to Specification Sheet / URL |
|-------------------|--------------|-----------------------------------|
| 0-10V: 100% - 1%  | (10V)        |                                   |
| Casambi Ready     | (CAS)        |                                   |



### CONNECTORS (Sold Separately)

**Note:** Connectors are factory assembled to each run length. Connectors are subject to change without notice.



Dry Plenum Rated Power Connector  
(20/3 Gauge Wire)  
**(A8-ZYPO-FWD-PC-PLM-DRY-X)**  
X = Specify Length, 36" Default, 25' Maximum

| Part #                  | Length | Qty. |
|-------------------------|--------|------|
| A8-ZYPO-FWD-PC-PLM-DRY- | 36"    |      |
| A8-ZYPO-FWD-PC-PLM-DRY- |        |      |

**Note:** Specify 1 Power Connector for each lead required. Power Connectors are factory assembled to each length.

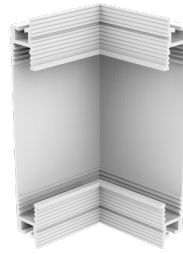
### END CAP (Sold Separately)



End Cap  
**(A8-ZYPO-FWD-EC-WH)**

| Part #            | Qty. |
|-------------------|------|
| A8-ZYPO-FWD-EC-WH |      |

### MITERED CORNERS (Sold Separately)



90° Internal Corner  
**(A8-ZYPO-FWD-90D-IN)**

| Part #             | Qty. |
|--------------------|------|
| A8-ZYPO-FWD-90D-IN |      |



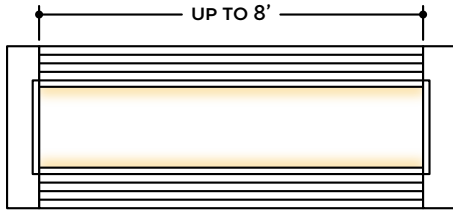
90° External Corner  
**(A8-ZYPO-FWD-90D-EX)**

| Part #             | Qty. |
|--------------------|------|
| A8-ZYPO-FWD-90D-EX |      |

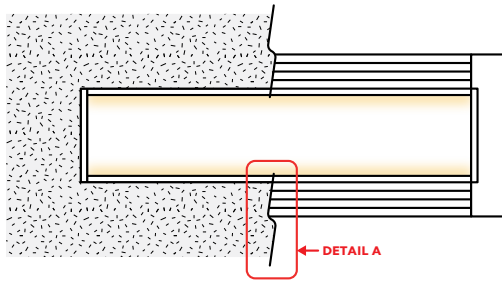


### DESIGN GUIDELINES

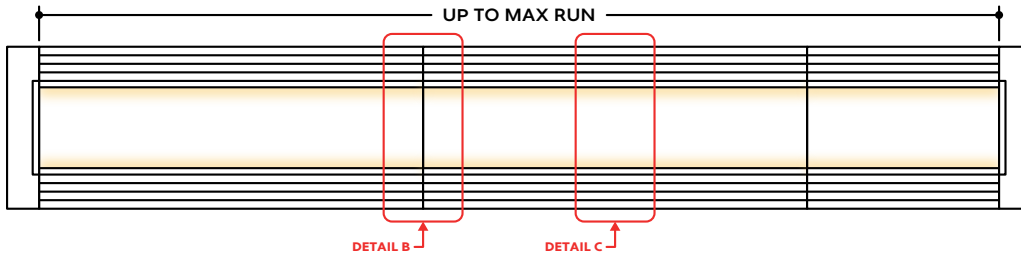
#### Individual Fixture



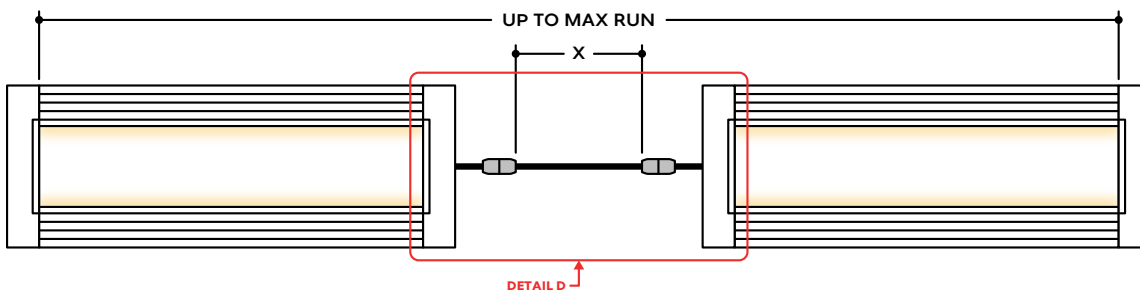
#### Individual Fixture with Mud-In



#### Continuous Run



#### Runs with Continuous Connector

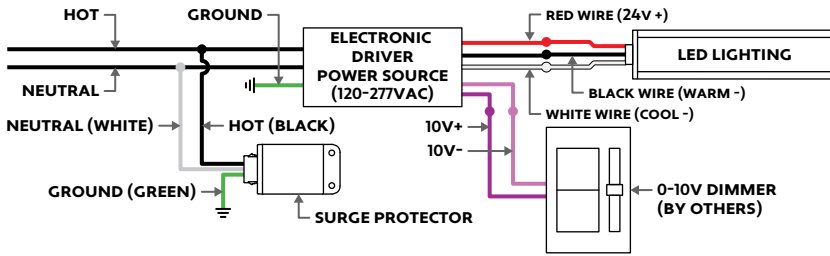


### KEY

- Detail A Mud-In:** Plaster is used to cover the flanges of the extrusion, leaving a flush appearance. Refer to installation instructions for details.
- Detail B Two Extrusions Meet:** Two extrusion segments meet. Refer to installation instructions for additional details.
- Detail C Two Lenses Meet:** Lenses are staggered so that the lens always overlaps where two extrusion segments meet. Refer to installation instructions for additional details.
- Detail D Dry Continuous Connector:** Used to span a corner or traverse a gap, corner, or obstacle in a dry location installation area. For Mud-In applications, the connection is located behind the mounting surface, such as drywall.

Note: Drawings not to scale. Product may differ from examples shown.

## 0-10V WIRING DIMMING DIAGRAM

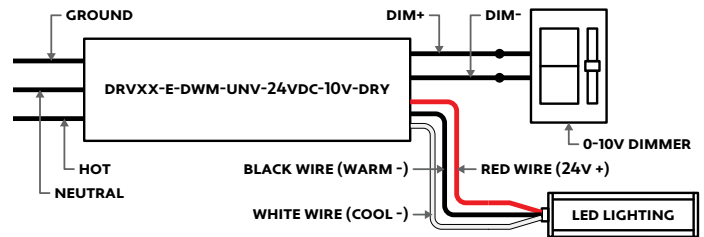


## 0-10V DIMMING (10V)

### Technical Requirements For Control Equipment

- The light output of the LEDs operated by the controllable LED driver is controlled by DC voltage applied to the control input leads (gray and violet). The actual response curve of LED driver current versus control voltage.
- The control device must be capable of accepting or sinking the DC current flow from the driver. The DC current from the driver that must be sunk by the control circuit is approximately 150uA (+/-50% for isolated dim interfaces, up to 1.5mA for non isolated dim interfaces).
- If the control bus is opened, or if the control device internally opens the control bus under some conditions, the voltage on the control bus will then be a function of the drivers, which is 10-15V. Maximum light output will be delivered under this condition.
- If the control bus is shorted either by a mechanical switch in the control or by the circuitry of the control device, or inadvertently in the wiring, the current on the control bus will be less than 1.5mA.
- As can be determined from the two items, simple two-level operation of the drivers can be achieved by proper usage and application of a simple open/closed switch on the control bus with maximum light being achieved when the switch is open and minimum light with the switch is closed.
- The driver is intended to be used with control voltages between 0-10VDC volts peak maximum on the driver control leads.
- Control equipment intended to control more than one driver must be capable of sinking the current supplied tot the control bus by the maximum number of drivers specified for the control device. At any given level setting it must maintain control bus voltage constant within a range of +/-5% as the number of drivers connected to the control bus varies from a minimum of one driver up to the maximum number specified for the control device.
- Driver of various ratings may be mixed on the same control system.

## 0-10V DIMMING WIRING DIAGRAM FOR DWM



## WIRING DIAGRAM FOR DWM-CAS

