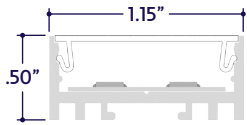


### GENERAL FEATURES

<b>Applications</b>	Accent, Decorative, Surface, Recessed, Pendant Lighting
<b>Lens</b>	Clear, 50% Semi-Frosted, or 100% Frosted
<b>Viewing Angle</b>	120°
<b>Length</b>	Built to Order (+/- 1/8" Tolerance)
<b>Construction</b>	Aluminum Extrusion
<b>Field Cutting</b>	Dry Location Field Cuttable
<b>Weight</b>	0.241 lbs per foot
<b>Mounting</b>	Mounting Channel or Mounting Clips (Sold Separately)
<b>Driver</b>	Remote (Sold Separately)
<b>Listing</b>	Dry Location UL2108, 67.1.9, 60.4, CSA C22.2 #9 UL8750, CSA250
<b>Temperature Ratings</b>	Operating / Startup: -20° to 48°C (-4° to 120°F) Storage: -40° to 76°C (-40° to 170°F)

[Installation Link](#)

### END VIEW / DIMENSIONS



### ELECTRICAL

<b>Dimming</b>	DMX
<b>Maximum Run (Class 1 Applications)</b>	10' (11W) 13' (9W)
<b>Maximum Run (Class 2 Applications)</b>	7' (11W) 9' (9W)
<b>Luminaire Voltage</b>	24VDC

### SPECIFY PRODUCT CODE | CHOOSE FROM DROP DOWNS

Series	Lens	Watts per Foot	Dimming	LED	Listing	Finish	Luminaire Length
<b>A8-ZYFA-SDL</b>			<b>DMX</b>		<b>DRY</b>		
ZYFA Standard Low (A8-ZYFA-SDL)	Clear Lens (CL)	9 Watts (9W)	DMX-512* <sup>1</sup> (DMX)	Red, Green, Blue, 3000K White* <sup>2</sup> (RGBW)	Indoor (DRY)	Natural Silver* <sup>3</sup> (NA)	Specify Length in Feet & Inches <b>Example:</b> 7'8"
	50% Semi-Frosted Lens (SF)	11 Watts (11W)		Red, Green, Blue, 6000K White (RGBCW)		Polished (PA) White (WH)	
	100% Frosted Lens (F)					Satin / Silver (SA) Black (BK)	

\*<sup>1</sup> Default DMX address of each luminaire is 001. Consult third party DMX commissioner to modify at time of installation.

\*<sup>2</sup> Default LED is RGBW if left blank.

\*<sup>3</sup> Default finish is Natural Silver (NA) if left blank.



# A8 Series | LED Tape

## ZYFA Standard Low

(A8-ZYFA-SDL)

TYPE



### LAMP FEATURES

<b>Lamp Type</b>	Color Changing LEDs: Red, Green, Blue, White
<b>Efficacy</b> (Based on White Only @ 100% Output)	75 Lumens per Watt

### LAMP SPECIFICATIONS

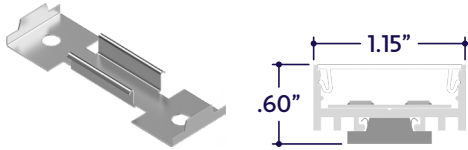
Lamp Number	Description	L70 LED Life
<b>RGBW</b>	Color Changing: Red, Green, Blue, 3000K White	50,000 hrs.
<b>RGBCW</b>	Color Changing: Red, Green, Blue, 6000K Cool White	

### DRIVERS

Dimming Selection	Product Code	Link to Specification Sheet / URL
DMX-512	(DMX)	

### MOUNTING OPTIONS (Sold Separately)

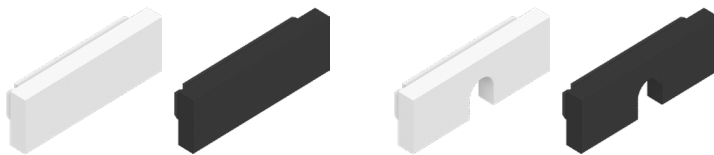
**Note:** Mounting clips are only available in Natural Silver Finish, unless otherwise specified.



Part #	Qty.
<b>A8-ZYFA-SDL-MC</b>	

**Note:** Use 1 mounting clip per 2', rounded up.  
Click on image to see cut sheet for additional details.

### END CAPS (Sold Separately)



**End Cap**  
(A8-ZYFA-SDL-EC-X)  
X = Specify Finish: White (WH) or Black (BK)

Part #	Qty.
<b>A8-ZYFA-SDL-EC-WH</b>	
<b>A8-ZYFA-SDL-EC-BK</b>	

**Note:** Default Finish is Black (BK) if unspecified.

**End Cap with Exit Hole**  
(A8-ZYFA-SDL-EC-H-X)  
X = Specify Finish: White (WH) or Black (BK)

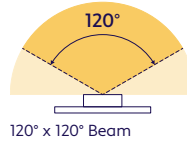
Part #	Qty.
<b>A8-ZYFA-SDL-EC-H-WH</b>	
<b>A8-ZYFA-SDL-EC-H-BK</b>	

**Note:** Default Finish is Black (BK) if unspecified.

### LENS / OPTICS APPEARANCE

<b>Clear Lens (CL)</b> Visible Diode Image 0% Loss Factor	<b>50% Semi-Frosted Lens (SF)</b> Slight Diode Image 12.5% Loss Factor	<b>100% Frosted Lens (F)</b> Slight Diode Image 25% Loss Factor

### BEAM ANGLE



### DMX ACCESSORIES (Sold Separately)



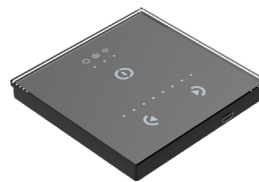
Part #	Qty.
<b>DRV100-E-UNV-24VDC-DMX-DRY-RGBW</b>	

**Note:** Use 1 Driver for each run up to 100 Watts.  
Click on image to see Specification Submittal.



Part #	Qty.
<b>CTRL-DMX-RGBX</b>	

**Note:** Use 1 Decoder for each run up to 180 Watts. Not required if using DRV100-E.



Part #	Qty.
<b>CTRL-DMX-128C</b>	

**Note:** Controls up to 128 DMX Channels, or up to 32 RGBW light fixtures.



Part #	Qty.
<b>CTRL-DMX-1024C</b>	

**Note:** Controls up to 1024 DMX Channels, or up to 256 RGBW light fixtures.

1170 N Red Gum St, Anaheim, CA 92806

aluz.lighting | info@aluz.lighting | 866.ALUZ.LTG | 714.535.7900

© ALUZ All Rights Reserved. ALUZ reserves the right to make changes or withdraw specifications without prior notice.

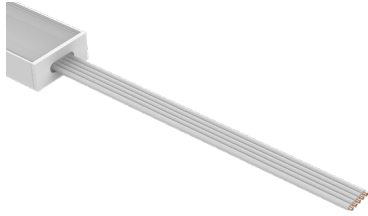
Specification Submittal

Page 2 of 5

7 / 11 / 2024 / Rev 8

### DRY CONNECTORS (Sold Separately)

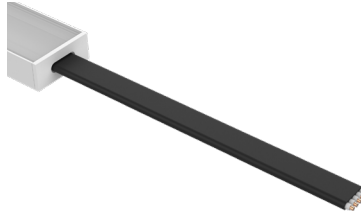
**Note:** Connectors are factory assembled to each run length. Connectors are subject to change without notice.



Dry Power Connector  
(20/5 Gauge Wire)  
**(A8-ZIZA-SDL-PC-DRY-X)**  
X = Specify Length, 36" Default, 25' Maximum

Part #	Length	Qty.
A8-ZIZA-SDL-PC-DRY-	36"	
A8-ZIZA-SDL-PC-DRY-		

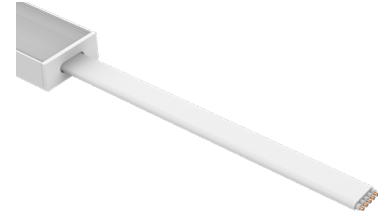
**Note:** Specify 1 Power Connector for each lead required. Power Connectors are factory assembled to each length.



Dry Power Connector with Black Jacket  
(20/5 Gauge Wire)  
**(A8-ZIZA-SDL-PC-DRY-BK-X)**  
X = Specify Length, 36" Default, 25' Maximum

Part #	Length	Qty.
A8-ZIZA-SDL-PC-DRY-BK-	36"	
A8-ZIZA-SDL-PC-DRY-BK-		

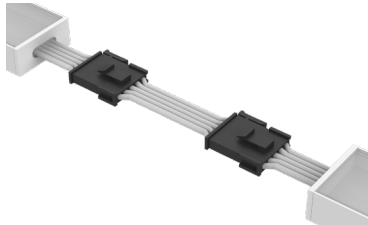
**Note:** Specify 1 Power Connector for each lead required. Power Connectors are factory assembled to each length.



Dry Power Connector with White Jacket  
(20/5 Gauge Wire)  
**(A8-ZIZA-SDL-PC-DRY-WH-X)**  
X = Specify Length, 36" Default, 25' Maximum

Part #	Length	Qty.
A8-ZIZA-SDL-PC-DRY-WH-	36"	
A8-ZIZA-SDL-PC-DRY-WH-		

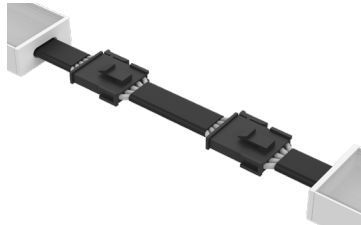
**Note:** Specify 1 Power Connector for each lead required. Power Connectors are factory assembled to each length.



Dry Continuous Connector  
(20/5 Gauge Wire)  
**(A8-ZIZA-SDL-CC-DRY-X)**  
X = Specify Length, 3" Default

Part #	Length	Qty.
A8-ZIZA-SDL-CC-DRY-	3"	
A8-ZIZA-SDL-CC-DRY-		

**Note:** Specify Continuous Connectors to traverse a gap or obstacle. Continuous Connectors are factory assembled to specified lengths.



Dry Continuous Connector with Black Jacket  
(20/5 Gauge Wire)  
**(A8-ZIZA-SDL-CC-DRY-BK-X)**  
X = Specify Length, 3" Default

Part #	Length	Qty.
A8-ZIZA-SDL-CC-DRY-BK-	3"	
A8-ZIZA-SDL-CC-DRY-BK-		

**Note:** Specify Continuous Connectors to traverse a gap or obstacle. Continuous Connectors are factory assembled to specified lengths.



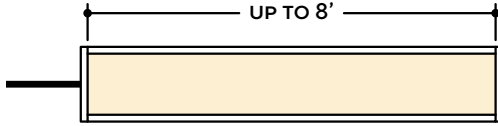
Dry Continuous Connector with White Jacket  
(20/5 Gauge Wire)  
**(A8-ZIZA-SDL-CC-DRY-WH-X)**  
X = Specify Length, 3" Default

Part #	Length	Qty.
A8-ZIZA-SDL-CC-DRY-WH-	3"	
A8-ZIZA-SDL-CC-DRY-WH-		

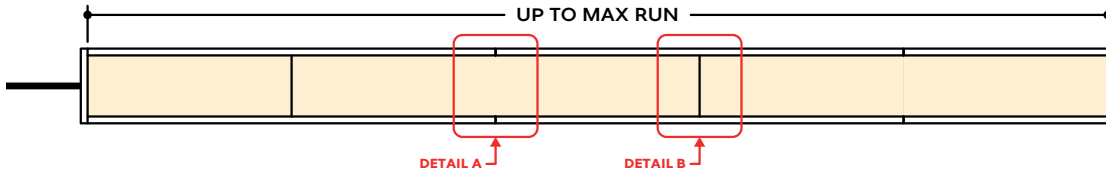
**Note:** Specify Continuous Connectors to traverse a gap or obstacle. Continuous Connectors are factory assembled to specified lengths.

## DESIGN GUIDELINES

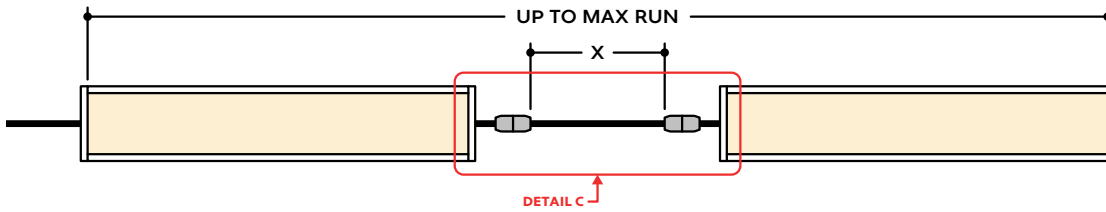
### Individual Fixture



### Continuous Run (Dry Location)



### Runs with Continuous Connector (Dry Location)

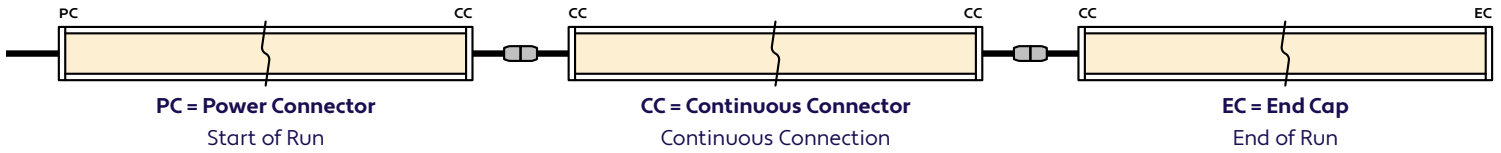


## KEY

- Detail A Two Extrusions Meet:** Two extrusion segments meet, held together by a mounting clip. Refer to installation instructions for additional details.
- Detail B Two Lenses Meet:** Lenses are staggered so that the lens always overlaps where two extrusion segments meet. Refer to installation instructions for additional details.
- Detail C Dry Continuous Connector:** Used to span a corner or traverse a gap, corner, or obstacle in a dry location installation area.

**Note:** Drawings not to scale. Product may differ from examples shown.

### CONNECTION SEQUENCE

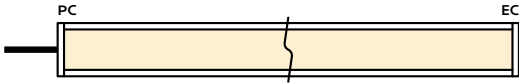


- Specifying a layout is not required to place an order.
- Configuration code applies to full length ordered and will be built per the Continuous Run models on Design Guidelines.
- Connector type subject to change based on availability and listing. Refer to Design Guidelines for details.

### HOW TO SPECIFY CONFIGURATIONS

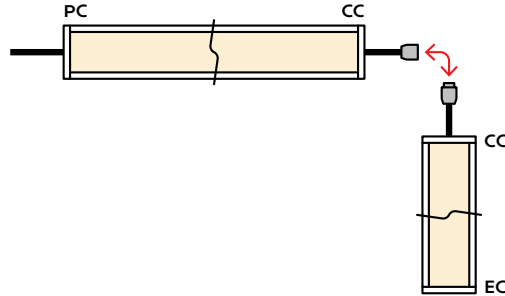
#### Example: 20' Straight Run

- 1x A8-ZYFA-SDL-CL-9W-DMX-RGBW-DRY-NA-20'-PC-EC



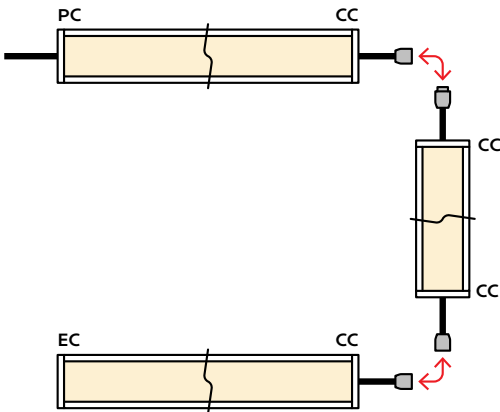
#### Example: 25' L-Shaped Run

- 1x A8-ZYFA-SDL-CL-9W-DMX-RGBW-DRY-NA-12'-PC-CC
- 1x A8-ZYFA-SDL-CL-9W-DMX-RGBW-DRY-NA-6'-CC-EC



#### Example: 30' U-Shaped Run

- 1x A8-ZYFA-SDL-CL-9W-DMX-RGBW-DRY-NA-6'-PC-CC
- 1x A8-ZYFA-SDL-CL-9W-DMX-RGBW-DRY-NA-18'-CC-CC
- 1x A8-ZYFA-SDL-CL-9W-DMX-RGBW-DRY-NA-6'-CC-EC



#### Example: 28' Rectangle Shaped Run

- 1x A8-ZYFA-SDL-CL-9W-DMX-RGBW-DRY-NA-11'-PC-CC
- 1x A8-ZYFA-SDL-CL-9W-DMX-RGBW-DRY-NA-3'-CC-CC
- 1x A8-ZYFA-SDL-CL-9W-DMX-RGBW-DRY-NA-11'-CC-CC
- 1x A8-ZYFA-SDL-CL-9W-DMX-RGBW-DRY-NA-3'-CC-EC

