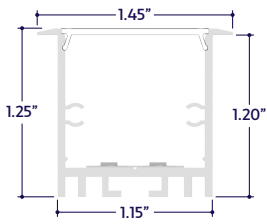
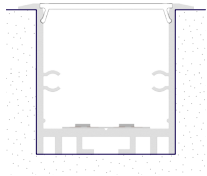


END VIEWS / DIMENSIONS



MOUNTING OPTION



Recessed Mount

GENERAL FEATURES

Applications	Accent, Decorative, Surface, Recessed, Pendant Lighting
Lens	Clear, 50% Semi-Frosted, or 100% Frosted
Viewing Angle	120°
Length	Built to Order (+/- 1/8" Tolerance)
Construction	Aluminum Extrusion
Field Cutting	Dry Location Field Cuttable
Weight	0.275 lbs per foot
Mounting	Mounting Channel or Mounting Clips (Sold Separately)
Driver	Remote (Sold Separately)
Listing	Dry Location UL2108, 67.1.9, 60.4, CSA C22.2 #9 UL8750, CSA250
Temperature Ratings	Operating / Startup: -20° to 48°C (-4° to 120°F) Storage: -40° to 76°C (-40° to 170°F)

Installation Link

ELECTRICAL

Dimming	DMX
Maximum Run (Class 1 Applications)	10' (11W) 13' (9W)
Maximum Run (Class 2 Applications)	7' (11W) 9' (9W)
Luminaire Voltage	24VDC

SPECIFY PRODUCT CODE | CHOOSE FROM DROP DOWNS

Series	Lens	Watts per Foot	Dimming	LED	Listing	Finish	Luminaire Length
A8-ZYFA-RCD			DMX		DRY		
ZYFA Recessed (A8-ZYFA-RCD)	Clear Lens (CL)	9 Watts (9W)	DMX-512* ¹ (DMX)	Red, Green, Blue, 3000K White* ² (RGBW)	Indoor (DRY)	Natural Silver* ³ (NA)	Specify Length in Feet & Inches Example: 7'8"
	50% Semi-Frosted Lens (SF)	11 Watts (11W)		Red, Green, Blue, 6000K White (RGBCW)		Polished (PA) White (WH)	
	100% Frosted Lens (F)					Satin / Silver (SA) Black (BK)	

*¹ Default DMX address of each luminaire is 001. Consult third party DMX commissioner to modify at time of installation.

*² Default LED is RGBW if left blank.

*³ Default finish is Natural Silver (NA) if left blank.



A8 Series | LED Tape

ZYFA Recessed

(A8-ZYFA-RCD)

TYPE



LAMP FEATURES

Lamp Type	Color Changing LEDs: Red, Green, Blue, White
Efficacy (Based on White Only @ 100% Output)	75 Lumens per Watt

LAMP SPECIFICATIONS

Lamp Number	Description	L70 LED Life
RGBW	Color Changing: Red, Green, Blue, 3000K White	50,000 hrs.
RGBCW	Color Changing: Red, Green, Blue, 6000K Cool White	

DRIVERS

Dimming Selection	Product Code
DMX-512	(DMX)

LENS / OPTICS APPEARANCE



Clear Lens (CL)
Visible Diode Image
0% Loss Factor

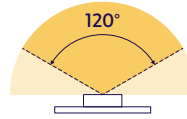


50% Semi-Frosted Lens (SF)
Slight Diode Image
12.5% Loss Factor



100% Frosted Lens (F)
Slight Diode Image
25% Loss Factor

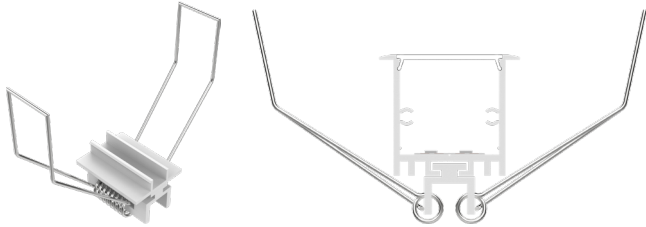
BEAM ANGLE



120° x 120° Beam

MOUNTING OPTIONS (Sold Separately)

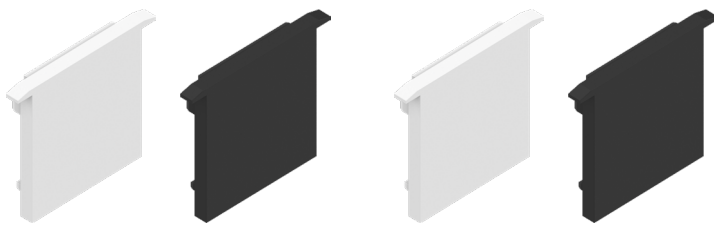
Note: Mounting clips are only available in Natural Silver Finish, unless otherwise specified.



Part #	Qty.
A8-ZYFA-RCD-SPR-MC	

Note: Use 1 mounting clip per 2', rounded up.
Click on image to see cut sheet for additional details.

END CAPS (Sold Separately)



End Cap
(A8-ZYFA-RCD-EC-X)
X = Specify Finish: White (WH) or Black (BK)

Part #	Qty.
A8-ZYFA-RCD-EC-WH	
A8-ZYFA-RCD-EC-BK	

Note: Default Finish is Black (BK) if unspecified.

End Cap with Exit Hole
(A8-ZYFA-RCD-EC-H-X)
X = Specify Finish: White (WH) or Black (BK)

Part #	Qty.
A8-ZYFA-RCD-EC-H-WH	
A8-ZYFA-RCD-EC-H-BK	

Note: Default Finish is Black (BK) if unspecified.

DMX ACCESSORIES (Sold Separately)



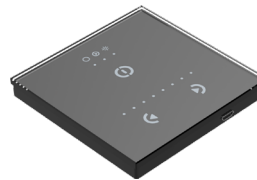
Part #	Qty.
DRV100-E-UNV-24VDC-DMX-DRY-RGBW	

Note: Use 1 Driver for each run up to 100 Watts.
Click on image to see Specification Submittal.



Part #	Qty.
CTRL-DMX-RGBX	

Note: Use 1 Decoder for each run up to 180 Watts. Not required if using DRV100-E.



Part #	Qty.
CTRL-DMX-128C	

Note: Controls up to 128 DMX Channels,
or up to 32 RGBW light fixtures.



Part #	Qty.
CTRL-DMX-1024C	

Note: Controls up to 1024 DMX Channels, or up to 256 RGBW light fixtures.

1170 N Red Gum St, Anaheim, CA 92806

aluz.lighting | info@aluz.lighting | 866.ALUZ.LTG | 714.535.7900

© ALUZ All Rights Reserved. ALUZ reserves the right to make changes or withdraw specifications without prior notice.

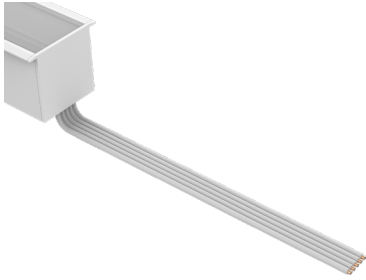
Specification Submittal

Page 2 of 4

7 / 11 / 2024 / Rev 9

DRY CONNECTORS (Sold Separately)

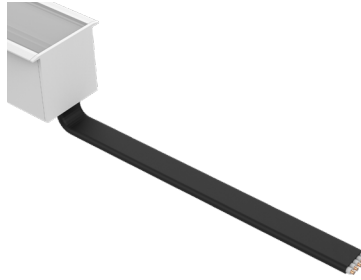
Note: Connectors are factory assembled to each run length. Connectors are subject to change without notice.



Dry Power Connector
(20/5 Gauge Wire)
(A8-ZYFA-RCD-PC-BFF-DRY-X)
X = Specify Length, 36" Default, 25' Maximum

Part #	Length	Qty.
A8-ZYFA-RCD-PC-BFF-DRY-	36"	
A8-ZYFA-RCD-PC-BFF-DRY-		

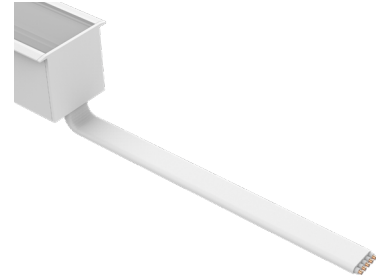
Note: Specify 1 Power Connector for each lead required. Power Connectors are factory assembled to each length.



Dry Power Connector with Black Jacket
(20/5 Gauge Wire)
(A8-ZYFA-RCD-PC-BFF-DRY-BK-X)
X = Specify Length, 36" Default, 25' Maximum

Part #	Length	Qty.
A8-ZYFA-RCD-PC-BFF-DRY-BK-	36"	
A8-ZYFA-RCD-PC-BFF-DRY-BK-		

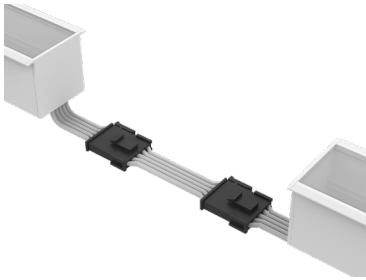
Note: Specify 1 Power Connector for each lead required. Power Connectors are factory assembled to each length.



Dry Power Connector with White Jacket
(20/5 Gauge Wire)
(A8-ZYFA-RCD-PC-BFF-DRY-WH-X)
X = Specify Length, 36" Default, 25' Maximum

Part #	Length	Qty.
A8-ZYFA-RCD-PC-BFF-DRY-WH-	36"	
A8-ZYFA-RCD-PC-BFF-DRY-WH-		

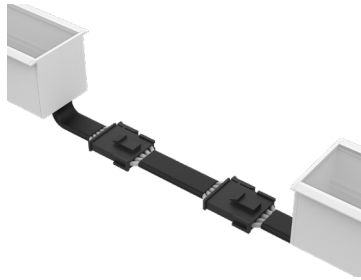
Note: Specify 1 Power Connector for each lead required. Power Connectors are factory assembled to each length.



Dry Continuous Connector
(20/5 Gauge Wire)
(A8-ZYFA-RCD-CC-BFF-DRY-X)
X = Specify Length, 3" Default

Part #	Length	Qty.
A8-ZYFA-RCD-CC-BFF-DRY-	3"	
A8-ZYFA-RCD-CC-BFF-DRY-		

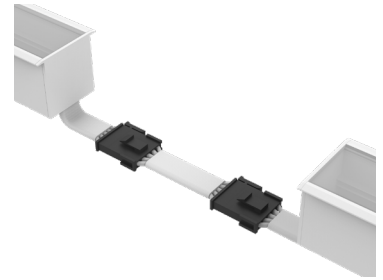
Note: Specify Continuous Connectors to traverse a gap or obstacle. Continuous Connectors are factory assembled to specified lengths.



Dry Continuous Connector with Black Jacket
(20/5 Gauge Wire)
(A8-ZYFA-RCD-CC-BFF-DRY-BK-X)
X = Specify Length, 3" Default

Part #	Length	Qty.
A8-ZYFA-RCD-CC-BFF-DRY-BK-	3"	
A8-ZYFA-RCD-CC-BFF-DRY-BK-		

Note: Specify Continuous Connectors to traverse a gap or obstacle. Continuous Connectors are factory assembled to specified lengths.



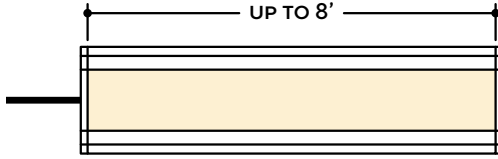
Dry Continuous Connector with White Jacket
(20/5 Gauge Wire)
(A8-ZYFA-RCD-CC-BFF-DRY-WH-X)
X = Specify Length, 3" Default

Part #	Length	Qty.
A8-ZYFA-RCD-CC-BFF-DRY-WH-	3"	
A8-ZYFA-RCD-CC-BFF-DRY-WH-		

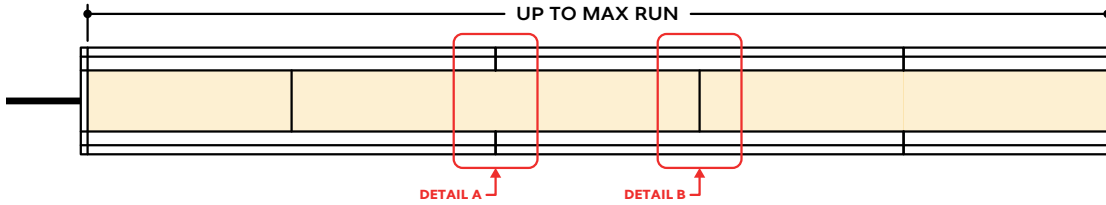
Note: Specify Continuous Connectors to traverse a gap or obstacle. Continuous Connectors are factory assembled to specified lengths.

DESIGN GUIDELINES

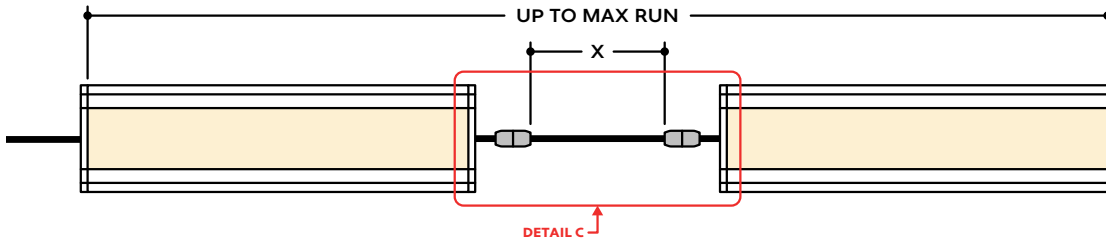
Individual Fixture



Continuous Run (Dry Location)



Runs with Continuous Connector (Dry Location)



KEY

Detail A Two Extrusions Meet: Two extrusion segments meet, held together by a mounting clip. Refer to installation instructions for additional details.

Detail B Two Lenses Meet: Lenses are staggered so that the lens always overlaps where two extrusion segments meet. Refer to installation instructions for additional details.

Detail C Dry Continuous Connector: Used to span a corner or traverse a gap, corner, or obstacle in a dry location installation area.

Note: Drawings not to scale. Product may differ from examples shown.