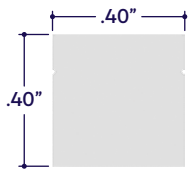
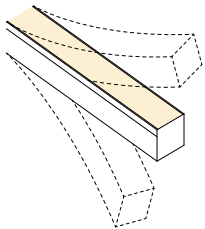


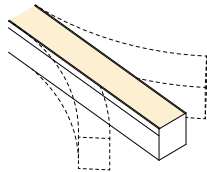
END VIEW / DIMENSIONS



LIGHTSTRIP BEND DIRECTION



Vertical Bend (Default) (VB)



Horizontal Bend (HB)

GENERAL FEATURES

Applications	Accent, Decorative Lighting
Lens	100% Frosted
Viewing Angle	120°
Length	Built to Order (+/- 0.25" Tolerance)
Construction	Flexible Lightstrip
Assembly Increment	3-1/4"
Field Cutting	Dry Location Only Consult factory for Wet Location Field Cutting
Mounting	Mounting Clips (Sold Separately)
Listing	Dry, Wet, or IP67 Location UL2108, 67.1.9, 60.4, CSA C22.2 #9 UL8750, CSA250
Driver	Remote (Sold Separately)
Closet Rating	Up to 3.6 Watts per Foot Maximum
Temperature Ratings	Operating / Startup: -20° to 48°C (-4° to 120°F) Storage: -40° to 76°C (-40° to 170°F)
Installation Link	

ELECTRICAL

Dimming	0-10V, Forward / Reverse Phase, Lutron, DMX, DALI
Maximum Run	65' (0.9W, 1.3W, 2W, 3W)
Luminaire Voltage	24VDC

SPECIFY PRODUCT CODE | CHOOSE FROM DROP DOWNS

Series	Bend Direction	Watts per Foot ²	Dimming	CCT LED	Listing	Luminaire Length ⁶
A8-ZUFI-FLM						
ZUFI Flex Mini 100% Frosted Lens: Line of Light (A8-ZUFI-FLM)	Vertical Bend ¹ (VB)	0.9 Watts (0.9W) 36 Lumens per Foot	Phase Dimming: Forward / Reverse Phase (PH) 0-10V: 100% - 1% (10V)	2700K (27K) 3000K (30K)	Indoor (DRY)	Specify Length using 3-1/4" Assembly Increment
	Horizontal Bend (HB)	1.3 Watts (1.3W) 53 Lumens per Foot	Hi-Lume 1% 3 Wire ³ (L3DA) Hi-Lume Premier 0.1% JA8 ⁴ (L3D0)	3500K (35K) 5000K (50K)	Outdoor ⁷ (WET)	
			2 Watts (2W) 82 Lumens per Foot	JA8 0-10V (JA8-10V) DMX-512 ⁵ (DMX)	Red (R) Green (G)	Outdoor IP67 ⁷ (IP67)
		3 Watts (3W) 123 Lumens per Foot	DALI ⁵ (DALI) Leave Blank for Non-Dimming	Blue (B) Amber (A)		

¹ Default Bend Direction is Vertical Bend (VB) if left blank.
² Lumens per Foot based on 35K CCT LED. **Example:** 41 Lumens x 0.9 Watts = 36 Lumens per Foot.
³ (L3DA) 40 watt max Lutron Hi-Lume 1% 3 Wire #L3DA4UIUKL-CV240
⁴ (L3D0) 96 watt max Hi-Lume Premier 0.1% #L3D0-96W24V-U
⁵ Default DMX address of each luminaire is 001. Consult third party DMX commissioner to modify at time of installation.
⁶ DALI commissioning to be performed by a third party at time of installation. ALUZ does not provide DALI commissioning.
⁷ Run lengths are required for Wet & IP67 Location products. Provide run lengths at time of order.
⁸ Luminaire length must be specified using the Assembly Increment. Specified lengths that deviate from the assembly increment will be sized to the nearest smaller increment.



LAMP FEATURES

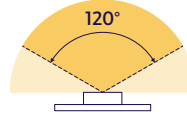
Lamp Type	LEDs
CRI	> 90
Efficacy (Based on 35K CCT LED)	41 Lumens per Watt

LAMP SPECIFICATIONS

Lamp Number	Correlated Color Temperature / Description	Efficacy (Lumens per Watt)	L70 LED Life
27K	2700 Kelvin (Warm White)	41	50,000 hrs.
30K	3000 Kelvin (Warm White)	41	
35K	3500 Kelvin (Neutral White)	41	
50K	5000 Kelvin (Cool White)	41	
R	Red (620nm)	41	
G	Green (527nm)	41	
B	Blue (470nm)	41	
A	Amber (589nm)	41	

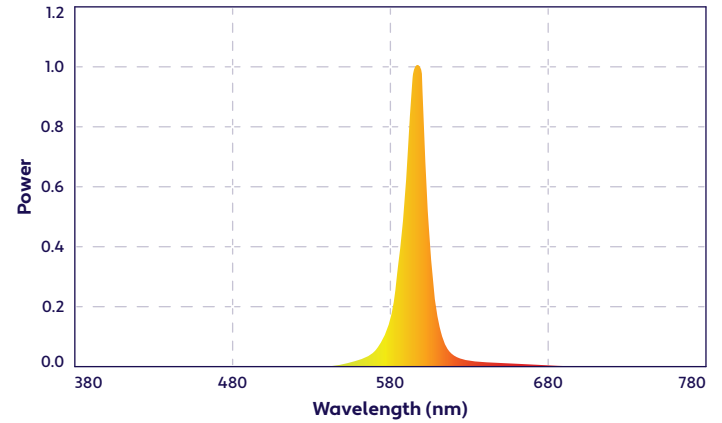
To calculate Lumens per Foot, multiply Efficacy by Watts per Foot.
Example: 41 Lumens per Watt x 0.9 Watts per Foot = 36 Lumens per Foot.

BEAM ANGLE



120° x 120° Beam

SPECTRAL POWER DISTRIBUTION AMBER LED (590nm) TURTLE FRIENDLY

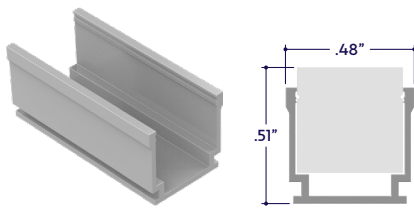


DRIVERS

Dimming Selection	Product Code	Link to Specification Sheet / URL
Phase Dimming: Forward Phase / Reverse Phase	(PH)	
0-10V: 100% - 1%	(10V)	
Hi-Lume 1% 3 Wire	(L3DA)	
Hi-Lume Premier 0.1% JA8	(L3D0)	
JA8 0-10V	(JA8-10V)	
DMX-512	(DMX)	
DALI	(DALI)	

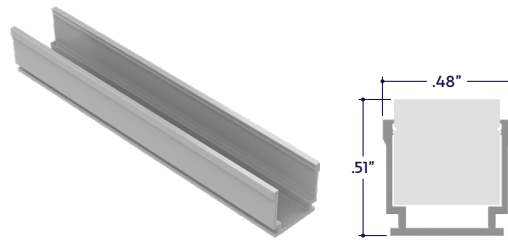
MOUNTING OPTIONS (Sold Separately)

Note: Mounting clips are only available in Natural Silver Finish, unless otherwise specified.



Part #	Qty.
A8-ZUFI-FLM-MC	

Note: Use 1 mounting clip per 2', rounded up.
 Click on image to see cut sheet for additional details.



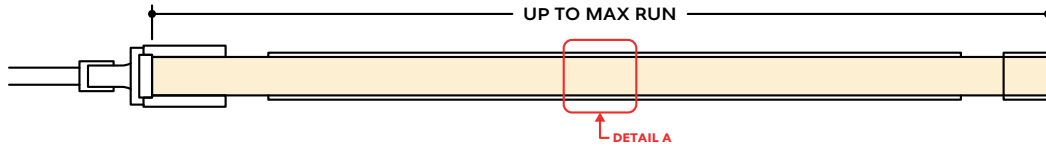
Part #	Qty.
A8-ZUFI-FLM-UC-8'	

Note: Available in 8' field cuttable segments.
 Click on image to see cut sheet for additional details.

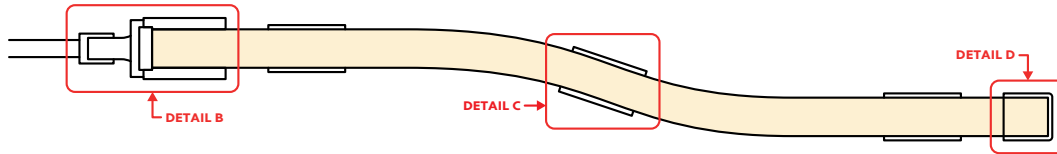


DESIGN GUIDELINES

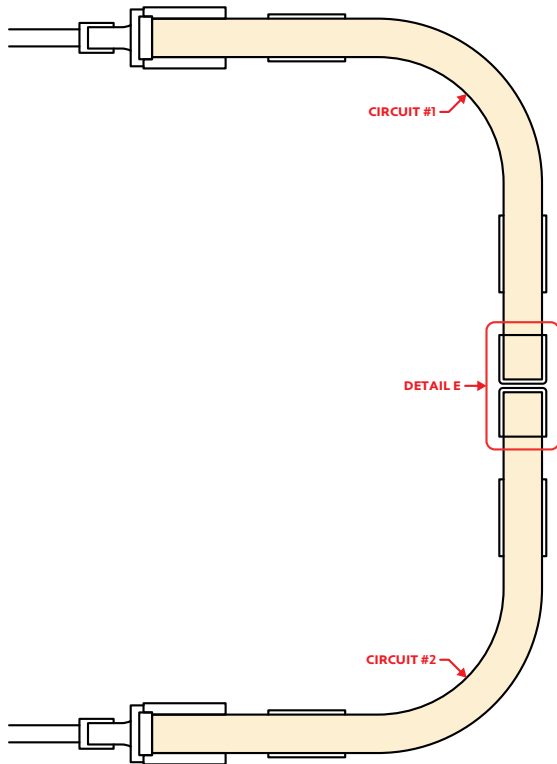
Straight Run (Dry or Wet Location)



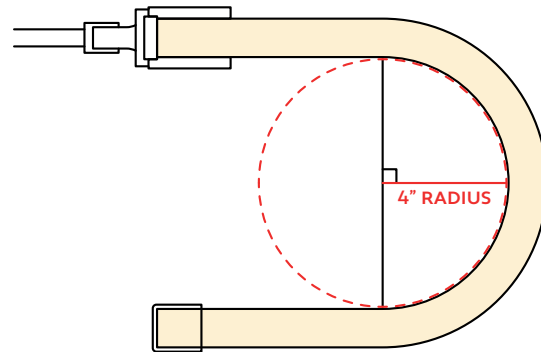
Curved Run (Dry or Wet Location)



Power Distribution



Minimum Bend Radius



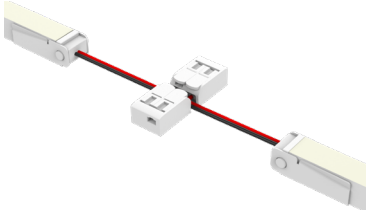
KEY

- Detail A Mounting Channel:** Used for linear applications to keep the run straight.
- Detail B Power Connector:** Connects the lighting to remote driver power source.
- Detail C Mounting Clip:** Use for curved application to hold the lightstrip at various points.
- Detail D Clear End Cap:** Used to terminate a run.
- Detail E Two Ends Meet:** When a run exceeds the maximum run length, it is split into multiple circuits. The runs are positioned so the two ends meet.

Note: Drawings not to scale. Product may differ from examples shown.

DRY CONNECTORS (Sold Separately)

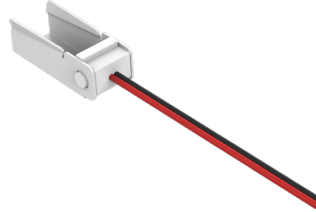
Note: Connectors are factory assembled to each run length. Connectors are subject to change without notice.



DRY Continuous Connector
(20/2 Gauge Wire)
(A8-ZUFI-FLM-CC-VB-HB-DRY-X)
X = Specify Length, 3" Default

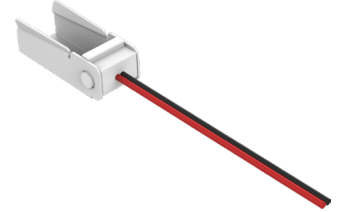
Part #	Length	Qty.
A8-ZUFI-FLM-CC-VB-HB-DRY-	3"	
A8-ZUFI-FLM-CC-VB-HB-DRY-		

Note: Specify Continuous Connectors to traverse a gap or obstacle. Continuous Connectors are factory assembled to specified lengths.



Vertical Bend Power Connector
(20/2 Gauge Wire)
(A8-ZUFI-FLM-PC-VB-36")

Part #	Qty.
A8-ZUFI-FLM-PC-36"	

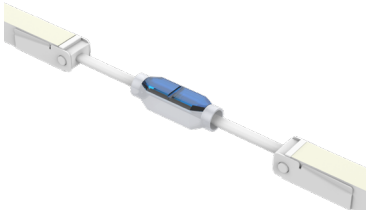


Horizontal Bend Power Connector
(20/2 Gauge Wire)
(A8-ZUFI-FLM-PC-HB-36")

Part #	Qty.
A8-ZUFI-FLM-PC-HB-36"	

WET CONNECTORS (Sold Separately)

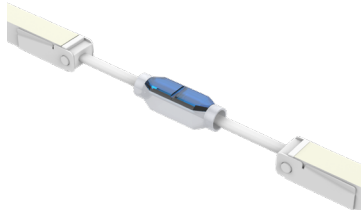
Note: Connectors are factory assembled to each run length. Connectors are subject to change without notice.



DRY Continuous Connector
(20/2 Gauge Wire)
(A8-ZUFI-FLM-CC-HB-DRY-X)
X = Specify Length, 3" Default

Part #	Length	Qty.
A8-ZUFI-FLM-CC-HB-DRY-	3"	
A8-ZUFI-FLM-CC-HB-DRY-		

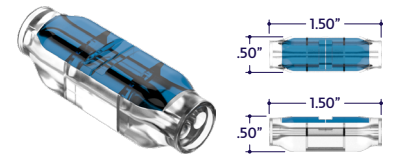
Note: Specify Continuous Connectors to traverse a gap or obstacle. Continuous Connectors are factory assembled to specified lengths.



DRY Continuous Connector
(20/2 Gauge Wire)
(A8-ZUFI-FLM-CC-VB-DRY-X)
X = Specify Length, 3" Default

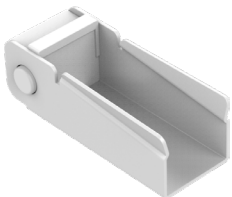
Part #	Length	Qty.
A8-ZUFI-FLM-CC-VB-DRY-	3"	
A8-ZUFI-FLM-CC-VB-DRY-		

Note: Specify Continuous Connectors to traverse a gap or obstacle. Continuous Connectors are factory assembled to specified lengths.



Part #	Qty.
A8-SC-2P-WET	

END CAP (Sold Separately)



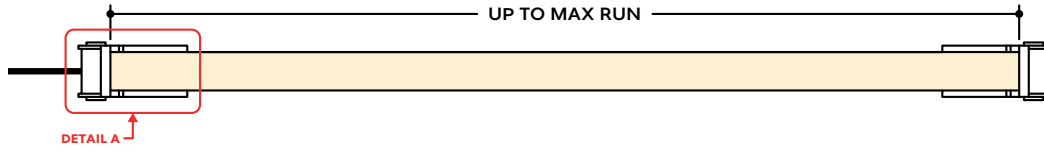
End Cap
(A8-ZUFI-FLM-EC)

Part #	Qty.
A8-ZUFI-FLM-EC	

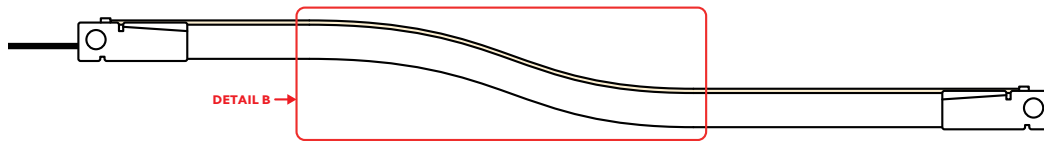


DESIGN GUIDELINES

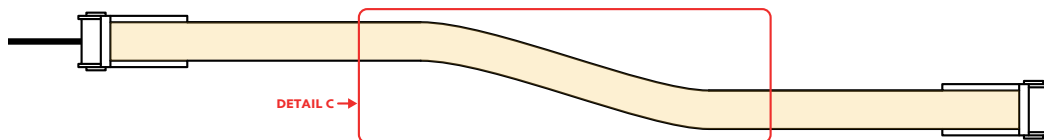
Straight Run (Dry or Wet Location)



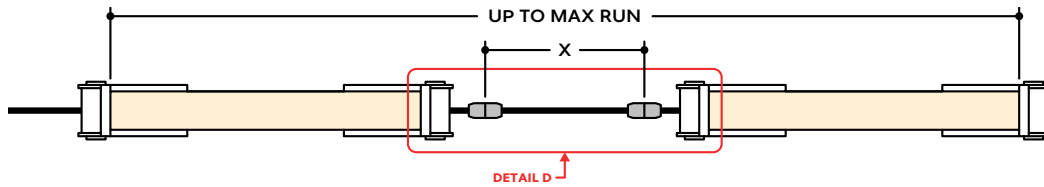
Curved Run with Vertical Bend (Dry or Wet Location)



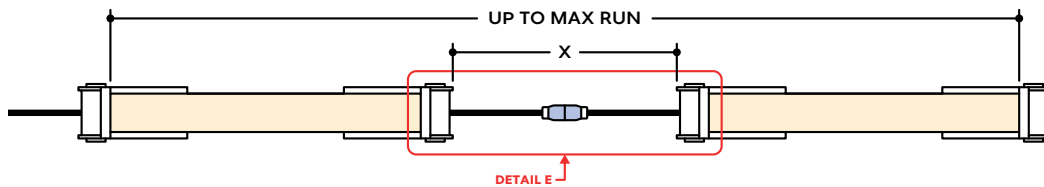
Curved Run with Horizontal Bend (Dry or Wet Location)



Runs with Continuous Connector (Dry Location)



Runs with Continuous Connector (Wet Location)

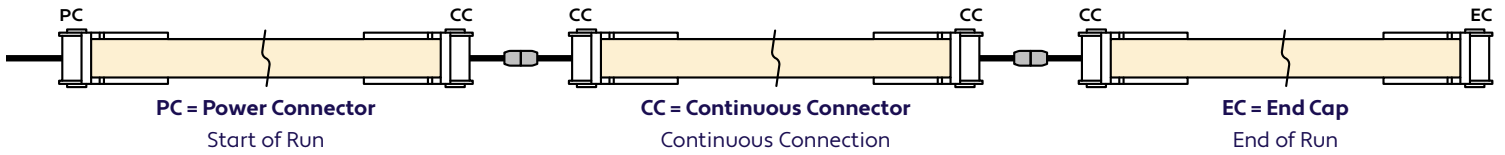


KEY

- Detail A Power Connector:** Connects the lighting to remote driver power source.
- Detail B Vertical Bend (VB):** The lightstrip is capable of bending along a vertical radius. 4" Minimum Bend Radius.
- Detail C Horizontal Bend (HB):** The lightstrip is capable of bending along a horizontal radius. 4" Minimum Bend Radius.
- Detail D Dry Continuous Connector:** Used to span a corner or traverse a gap, corner, or obstacle in a dry location installation area.
- Detail E Wet Continuous Connector:** Used to span a corner or traverse a gap, corner, or obstacle in a wet location installation area.

Note: Drawings not to scale. Product may differ from examples shown.

CONNECTION SEQUENCE

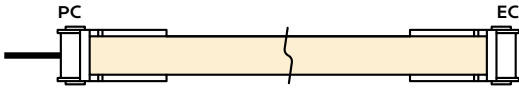


- Specifying a layout is not required to place an order.
- Configuration code applies to full length ordered and will be built per the Continuous Run models on Design Guidelines.
- Connector type subject to change based on availability and listing. Refer to Design Guidelines for details.
- Connector styles are built based on connector product code ordered. If connector style is unspecified, the default connector will be assembled to the run.

HOW TO SPECIFY CONFIGURATIONS

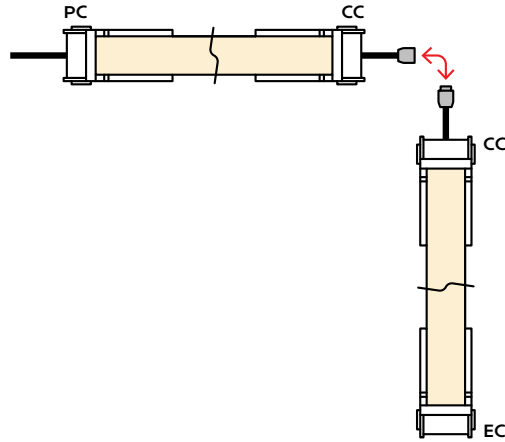
Example: 20' Straight Run

- 1x A8-ZUFI-FLM-VB-1.3W-10V-35K-DRY-20'-PC-EC



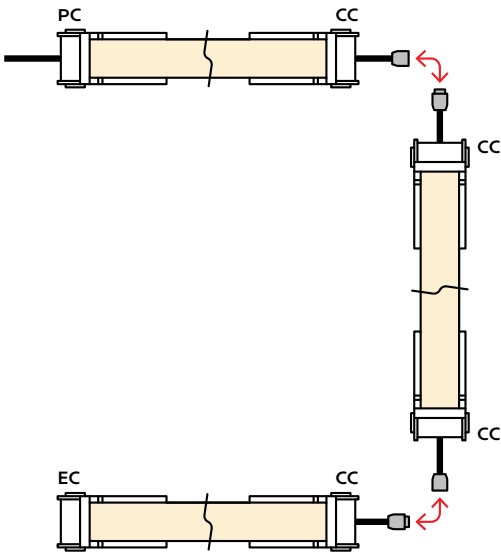
Example: 25' L-Shaped Run

- 1x A8-ZUFI-FLM-VB-1.3W-10V-35K-DRY-12'-PC-CC
- 1x A8-ZUFI-FLM-VB-1.3W-10V-35K-DRY-13'-CC-EC



Example: 30' U-Shaped Run

- 1x A8-ZUFI-FLM-VB-1.3W-10V-35K-DRY-6'-PC-CC
- 1x A8-ZUFI-FLM-VB-1.3W-10V-35K-DRY-18'-CC-CC
- 1x A8-ZUFI-FLM-VB-1.3W-10V-35K-DRY-6'-CC-EC



Example: 28' Rectangle Shaped Run

- 1x A8-ZUFI-FLM-VB-1.3W-10V-35K-DRY-11'-PC-CC
- 1x A8-ZUFI-FLM-VB-1.3W-10V-35K-DRY-3'-CC-CC
- 1x A8-ZUFI-FLM-VB-1.3W-10V-35K-DRY-11'-CC-CC
- 1x A8-ZUFI-FLM-VB-1.3W-10V-35K-DRY-3'-CC-EC

