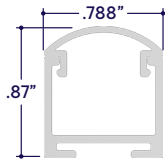


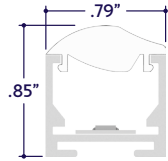
### GENERAL FEATURES

<b>Applications</b>	Accent, Decorative, Surface, Recess, Pendant Lighting
<b>Lens</b>	Clear, 50% Semi-Frosted, or 100% Frosted
<b>Optics &amp; Asymmetric</b>	15°, 30°, 45°, 60°, 120°, or Asymmetric Optics
<b>Length</b>	Built to Order (+/- 1/8" Tolerance)
<b>Construction</b>	Aluminum Extrusion
<b>Field Cutting</b>	Dry and Wet Location Field Cuttable
<b>Weight</b>	0.271 lbs per foot
<b>Mounting</b>	Mounting Channel or Mounting Clips (Sold Separately)
<b>Listing</b>	Dry, Wet, or IP67 Location UL2108, 67.1.9, 60.4, CSA C22.2 #9 UL8750, CSA250
<b>Driver</b>	Remote (Sold Separately)
<b>Closet Rating</b>	Up to 3.6 Watts per Foot Maximum
<b>Temperature Ratings</b>	Operating / Startup: -20° to 48°C (-4° to 120°F) Storage: -40° to 76°C (-40° to 170°F)
<b>Installation Link</b>	

### END VIEWS / DIMENSIONS



Clear Lens (CL)  
50% Semi-Frosted Lens (SF)  
100% Frosted Lens (F)  
Optic Lens (15D, 30D, 45D, 60D)



Asymmetric Lens (ASM)

### ELECTRICAL

<b>Dimming</b>	DMX, DALI
<b>Maximum Run (Class 1 Applications)</b>	26' (4.5W) 33' (3.6W)
<b>Maximum Run (Class 2 Applications)</b>	18' (4.5W) 23' (3.6W)
<b>Luminaire Voltage</b>	24VDC

### SPECIFY PRODUCT CODE | CHOOSE FROM DROP DOWNS

Series	Lens / Optics	Watts per Foot	Dimming	LED	Listing	Finish	Luminaire Length
<b>A8-ZUDA-SOP</b>							
<b>DWH</b>							
ZUDA Standard Optic (A8-ZUDA-SOP)	Clear Lens (CL) 50% Semi-Frosted Lens (SF)	3.6 Watts (3.6W)	DMX-512* <sup>1</sup> (DMX)	2400K - 6400K (DWH)	Indoor (DRY)	Natural Silver* <sup>4</sup> (NA)	Specify Length in Feet & Inches Example: 7'8"
	100% Frosted Lens: Line of Light (F)	4.5 Watts (4.5W)	DALI* <sup>2</sup> (DALI)		Outdoor* <sup>3</sup> (WET)	Polished (PA) White (WH)	
	Asymmetric Lens (ASM)				Outdoor IP67* <sup>3</sup> (IP67)	Satin / Silver (SA) Black (BK)	
	15° Optics (15D)						
	30° Optics (30D)						
	45° Optics (45D)						
	60° Optics (60D)						

\*<sup>1</sup> Default DMX address of each luminaire is 001. Consult third party DMX commissioner to modify at time of installation.  
\*<sup>2</sup> DALI commissioning to be performed by a third party at time of installation. ALUZ does not provide DALI commissioning.  
\*<sup>3</sup> Run lengths are required for Wet & IP67 Location products. Provide run lengths at time of order.  
\*<sup>4</sup> Default finish is Natural Silver (NA) if left blank.



### LAMP FEATURES

<b>Lamp Type</b>	Dynamic White LEDs: 2400K - 6400K
<b>CRI</b>	> 90
<b>Efficacy*</b>	117 Lumens per Watt @ Lowest CCT ( <b>24K</b> ) 129 Lumens per Watt @ Highest CCT ( <b>64K</b> )

**Note:** Efficacy is based on 24K CCT LED (**24K**) with Clear Lens (**CL**).

### LENS / OPTICS APPEARANCE

<b>Clear Lens (CL)</b> Visible Diode Image 0% Loss Factor	<b>50% Semi-Frosted Lens (SF)</b> Slight Diode Image 12.5% Loss Factor	<b>100% Frosted Lens (F)</b> No Diode Image: Line of Light 25% Loss Factor
<b>Asymmetric Lens (ASM)</b> Slight Diode Image 18% Loss Factor	<b>Optic Lens (15D, 30D, 45D, 60D)</b> Slight Diode Image 18% Loss Factor	

### LAMP SPECIFICATIONS

Lamp Number	Correlated Color Temperature (CCT) Gamut	L70 LED Life
DWH	Dynamic White: 2400K - 6400K	50,000 hrs.

### BEAM ANGLES

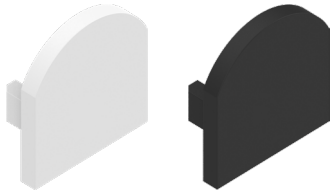
 120° x 120° Beam Clear Lens ( <b>CL</b> ) 50% Semi-Frosted Lens ( <b>SF</b> ) 100% Frosted Lens ( <b>F</b> )	 45° x 60° Beam Asymmetric Lens ( <b>ASM</b> )	 15° x 60° Beam Optic Lens ( <b>15D</b> )
 30° x 60° Beam Optic Lens ( <b>30D</b> )	 45° x 60° Beam Optic Lens ( <b>45D</b> )	 60° x 60° Beam Optic Lens ( <b>60D</b> )

### MOUNTING OPTIONS (Sold Separately)

**Note:** Mounting clips are only available in Natural Silver Finish, unless otherwise specified.

<b>Part #</b> A1-ZUDA-SOP-MC	<b>Part #</b> A1-ZUDA-SOP-MC-2	<b>Part #</b> A1-ZUDA-SOP-MC-3	<b>Part #</b> A1-ZUDA-SOP-MC-4
<b>Qty.</b>	<b>Qty.</b>	<b>Qty.</b>	<b>Length</b> <b>Qty.</b>
<b>Note:</b> Use 1 mounting clip per 2', rounded up.	<b>Note:</b> Use 1 mounting clip per 2', rounded up.	<b>Note:</b> Use 1 mounting clip per 2', rounded up.	<b>Note:</b> Use 1 mounting clip per 2', rounded up.
<b>Part #</b> A1-ZUDA-SOP-MC-ADJ	<b>Part #</b> A1-ZUDA-SOP-MC-MM	<b>Part #</b> A8-ZUDA-SOP-LVR	<b>Qty.</b>
<b>Note:</b> Use 1 mounting clip per 2', rounded up.	<b>Note:</b> Use 1 mounting clip per 2', rounded up.	<b>Note:</b> Louver is available in 1' increments. Specify total number of louvers needed. Only available in black finish.	

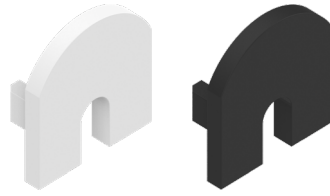
### END CAPS (Sold Separately)



End Cap  
(A8-ZUDA-SOP-EC-X)  
X = Specify Finish: White (WH) or Black (BK)

Part #	Qty.
A8-ZUDA-SOP-EC-WH	
A8-ZUDA-SOP-EC-BK	

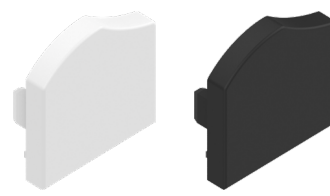
Note: Only compatible with (CL), (SF), (F), (15D), (30D), (45D), and (60D) lenses.  
Note: Default Finish is Black (BK) if unspecified.



End Cap with Exit Hole  
(A8-ZUDA-SOP-EC-H-X)  
X = Specify Finish: White (WH) or Black (BK)

Part #	Qty.
A8-ZUDA-SOP-EC-H-WH	
A8-ZUDA-SOP-EC-H-BK	

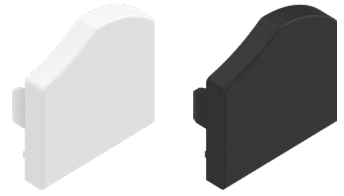
Note: Only compatible with (CL), (SF), (F), (15D), (30D), (45D), and (60D) lenses.  
Note: Default Finish is Black (BK) if unspecified.



Left End Cap for Asymmetric Lens  
(A8-ZUDA-SOP-ECL-ASM-X)  
X = Specify Finish: White (WH) or Black (BK)

Part #	Qty.
A8-ZUDA-SOP-ECL-ASM-WH	
A8-ZUDA-SOP-ECL-ASM-BK	

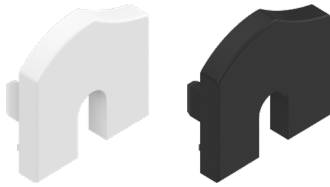
Note: Only compatible with Asymmetric Lens (ASM).  
Note: Default Finish is Black (BK) if unspecified.



Right End Cap for Asymmetric Lens  
(A8-ZUDA-SOP-ECR-ASM-X)  
X = Specify Finish: White (WH) or Black (BK)

Part #	Qty.
A8-ZUDA-SOP-ECR-ASM-WH	
A8-ZUDA-SOP-ECR-ASM-BK	

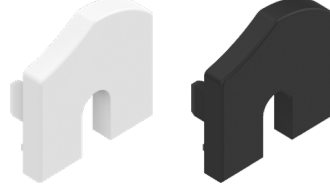
Note: Only compatible with Asymmetric Lens (ASM).  
Note: Default Finish is Black (BK) if unspecified.



Left End Cap for Asymmetric Lens w/ Exit Hole  
(A8-ZUDA-SOP-ECL-ASM-H-X)  
X = Specify Finish: White (WH) or Black (BK)

Part #	Qty.
A8-ZUDA-SOP-ECL-ASM-H-WH	
A8-ZUDA-SOP-ECL-ASM-H-BK	

Note: Only compatible with Asymmetric Lens (ASM).  
Note: Default Finish is Black (BK) if unspecified.



Right End Cap for Asymmetric Lens w/ Exit Hole  
(A8-ZUDA-SOP-ECR-ASM-H-X)  
X = Specify Finish: White (WH) or Black (BK)

Part #	Qty.
A8-ZUDA-SOP-ECR-ASM-H-WH	
A8-ZUDA-SOP-ECR-ASM-H-BK	

Note: Only compatible with Asymmetric Lens (ASM).  
Note: Default Finish is Black (BK) if unspecified.

### DMX ACCESSORIES (Sold Separately)



Part #	Qty.
DRV100-E-UNV-24VDC-DMX-DRY-DWH	
DRV100-E-UNV-24VDC-DALI-DRY-DWH	

Note: Use 1 Driver for each run up to 100 Watts.  
Click on image to see Specification Submittal.



Part #	Qty.
CTRL-DMX-RGBX	

Note: Use 1 Decoder for each run up to 180 Watts. Not required if using DRV100-E.



Part #	Qty.
CTRL-DMX-128C	

Note: Controls up to 128 DMX Channels, or up to 32 RGBW light fixtures.



Part #	Qty.
CTRL-DMX-1024C	

Note: Controls up to 1024 DMX Channels, or up to 256 RGBW light fixtures.

### DRY CONNECTORS (Sold Separately)

**Note:** Connectors are factory assembled to each run length. Connectors are subject to change without notice.



Dry Power Connector  
(20/3 Gauge Wire)  
**(A8-ZUDA-SOP-PC-DRY-X)**  
X = Specify Length, 36" Default, 25' Maximum

Part #	Length	Qty.
A8-ZUDA-SOP-PC-DRY-	36"	
A8-ZUDA-SOP-PC-DRY-		

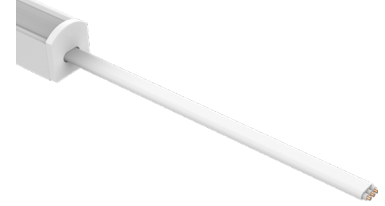
**Note:** Specify 1 Power Connector for each lead required. Power Connectors are factory assembled to each length.



Dry Power Connector with Black Jacket  
(20/3 Gauge Wire)  
**(A8-ZUDA-SOP-PC-DRY-BK-X)**  
X = Specify Length, 36" Default, 25' Maximum

Part #	Length	Qty.
A8-ZUDA-SOP-PC-DRY-BK-	36"	
A8-ZUDA-SOP-PC-DRY-BK-		

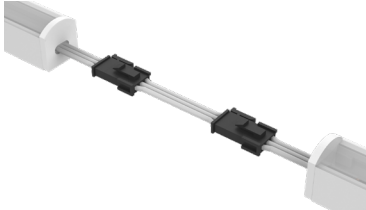
**Note:** Specify 1 Power Connector for each lead required. Power Connectors are factory assembled to each length.



Dry Power Connector with White Jacket  
(20/3 Gauge Wire)  
**(A8-ZUDA-SOP-PC-DRY-WH-X)**  
X = Specify Length, 36" Default, 25' Maximum

Part #	Length	Qty.
A8-ZUDA-SOP-PC-DRY-WH-	36"	
A8-ZUDA-SOP-PC-DRY-WH-		

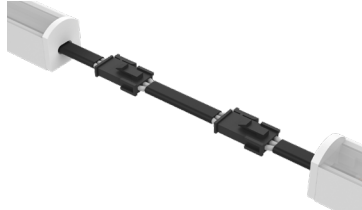
**Note:** Specify 1 Power Connector for each lead required. Power Connectors are factory assembled to each length.



Dry Continuous Connector  
(20/3 Gauge Wire)  
**(A8-ZUDA-SOP-CC-DRY-X)**  
X = Specify Length, 3" Default

Part #	Length	Qty.
A8-ZUDA-SOP-CC-DRY-	3"	
A8-ZUDA-SOP-CC-DRY-		

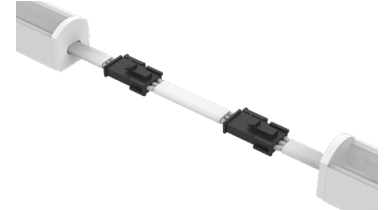
**Note:** Specify Continuous Connectors to traverse a gap or obstacle. Continuous Connectors are factory assembled to specified lengths.



Dry Continuous Connector with Black Jacket  
(20/3 Gauge Wire)  
**(A8-ZUDA-SOP-CC-DRY-BK-X)**  
X = Specify Length, 3" Default

Part #	Length	Qty.
A8-ZUDA-SOP-CC-DRY-BK-	3"	
A8-ZUDA-SOP-CC-DRY-BK-		

**Note:** Specify Continuous Connectors to traverse a gap or obstacle. Continuous Connectors are factory assembled to specified lengths.



Dry Continuous Connector with White Jacket  
(20/3 Gauge Wire)  
**(A8-ZUDA-SOP-CC-DRY-WH-X)**  
X = Specify Length, 3" Default

Part #	Length	Qty.
A8-ZUDA-SOP-CC-DRY-WH-	3"	
A8-ZUDA-SOP-CC-DRY-WH-		

**Note:** Specify Continuous Connectors to traverse a gap or obstacle. Continuous Connectors are factory assembled to specified lengths.

### WET CONNECTORS (Sold Separately)

**Note:** Connectors are factory assembled to each run length. Connectors are subject to change without notice.



Wet Power Connector  
(20/3 Gauge Wire)  
**(A8-ZUDA-SOP-PC-WET-X)**  
X = Specify Length, 36" Default, 25' Maximum

Part #	Length	Qty.
A8-ZUDA-SOP-PC-WET-	36"	
A8-ZUDA-SOP-PC-WET-		

**Note:** Specify 1 Power Connector for each lead required. Power Connectors are factory assembled to each length.



Wet Continuous Connector  
(20/3 Gauge Wire)  
**(A8-ZUDA-SOP-CC-WET-X)**  
X = Specify Length, 3" Default

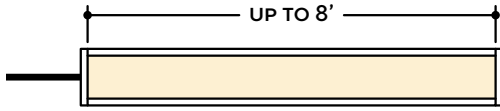
Part #	Length	Qty.
A8-ZUDA-SOP-CC-WET-	3"	
A8-ZUDA-SOP-CC-WET-		

**Note:** Specify Continuous Connectors to traverse a gap or obstacle. Continuous Connectors are factory assembled to specified lengths.

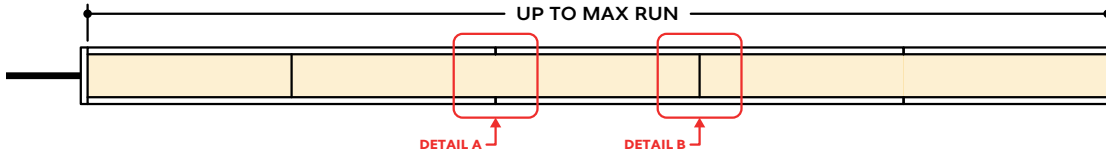


## DESIGN GUIDELINES

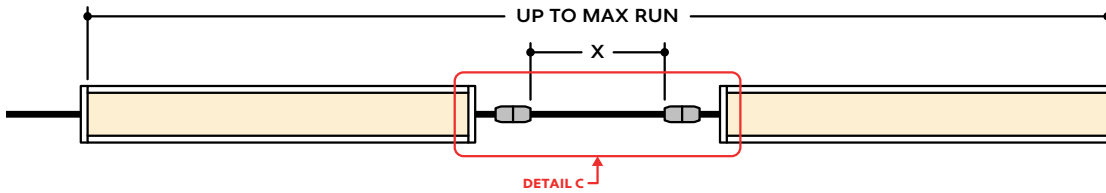
### Individual Fixture



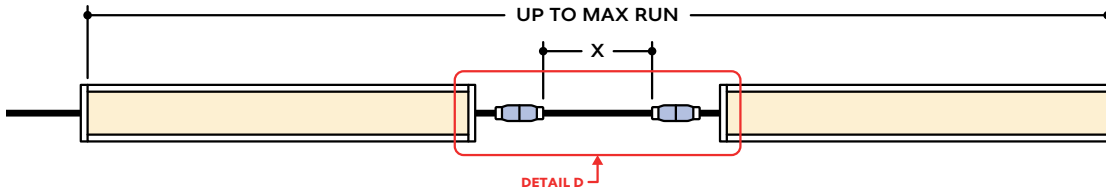
### Continuous Run (Dry or Wet Location)



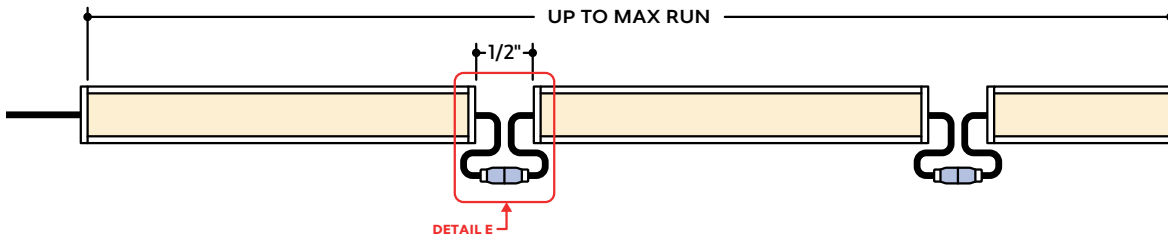
### Runs with Continuous Connector (Dry Location)



### Runs with Continuous Connector (Wet Location)



### Continuous Run (IP67)

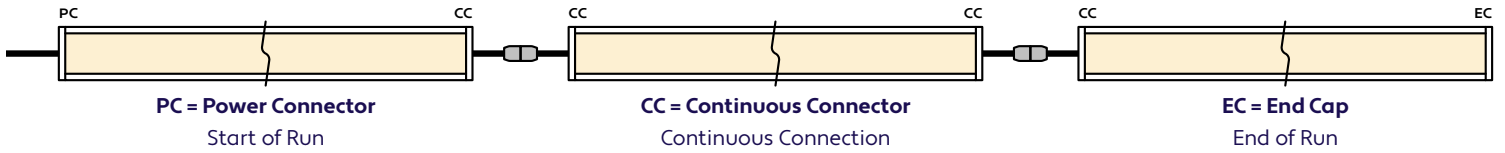


## KEY

- Detail A Two Extrusions Meet:** Two extrusion segments meet, held together by a mounting clip. Refer to installation instructions for additional details.
- Detail B Two Lenses Meet:** Lenses are staggered so that the lens always overlaps where two extrusion segments meet. Refer to installation instructions for additional details.
- Detail C Dry Continuous Connector:** Used to span a corner or traverse a gap, corner, or obstacle in a dry location installation area.
- Detail D Wet Continuous Connector:** Used to span a corner or traverse a gap, corner, or obstacle in a wet location installation area.
- Detail E Continuous Connection (Wet Location):** Luminaire segments are connected using a provided splice connector, with a 1/2" gap between segments.

Note: Drawings not to scale. Product may differ from examples shown.

### CONNECTION SEQUENCE

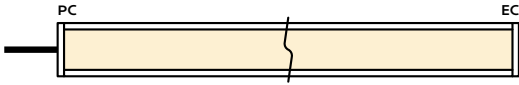


- Specifying a layout is not required to place an order.
- Configuration code applies to full length ordered and will be built per the Continuous Run models on Design Guidelines.
- Connector type subject to change based on availability and listing. Refer to Design Guidelines for details.

### HOW TO SPECIFY CONFIGURATIONS

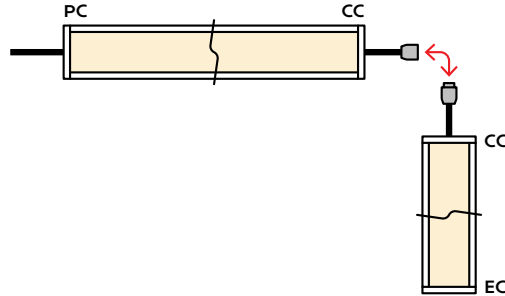
#### Example: 20' Straight Run

- 1x A8-ZUDA-SOP-CL-3.6W-DMX-DWH-DRY-NA-20'-PC-EC



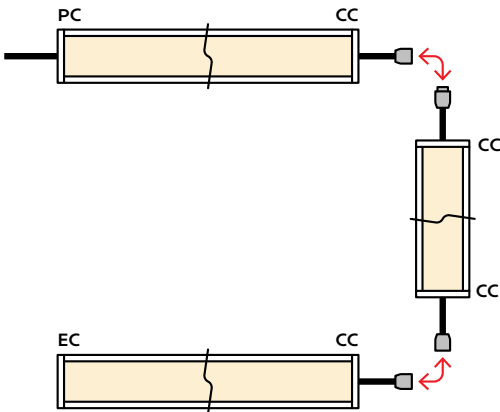
#### Example: 25' L-Shaped Run

- 1x A8-ZUDA-SOP-CL-3.6W-DMX-DWH-WET-NA-12'-PC-CC
- 1x A8-ZUDA-SOP-CL-3.6W-DMX-DWH-WET-NA-6'-CC-EC



#### Example: 30' U-Shaped Run

- 1x A8-ZUDA-SOP-CL-3.6W-DMX-DWH-DRY-NA-6'-PC-CC
- 1x A8-ZUDA-SOP-CL-3.6W-DMX-DWH-DRY-NA-18'-CC-CC
- 1x A8-ZUDA-SOP-CL-3.6W-DMX-DWH-DRY-NA-6'-CC-EC



#### Example: 28' Rectangle Shaped Run

- 1x A8-ZUDA-SOP-CL-3.6W-DMX-DWH-WET-NA-11'-PC-CC
- 1x A8-ZUDA-SOP-CL-3.6W-DMX-DWH-WET-NA-3'-CC-CC
- 1x A8-ZUDA-SOP-CL-3.6W-DMX-DWH-WET-NA-11'-CC-CC
- 1x A8-ZUDA-SOP-CL-3.6W-DMX-DWH-WET-NA-3'-CC-EC

