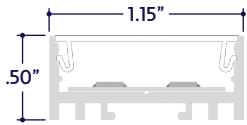


END VIEW / DIMENSIONS



LENS / OPTICS APPEARANCE



Clear Lens (CL)
Visible Diode Image
0% Loss Factor



50% Semi-Frosted Lens (SF)
Slight Diode Image
12.5% Loss Factor



100% Frosted Lens (F)
Slight Diode Image
25% Loss Factor

GENERAL FEATURES

Applications	Accent, Decorative, Surface, Recessed, Pendant Lighting
Lens	Clear, 50% Semi-Frosted, or 100% Frosted
Viewing Angle	120°
Length	Built to Order (+/- 1/8" Tolerance)
Construction	Aluminum Extrusion
Field Cutting	Dry, Damp, and Wet Location Field Cuttable
Weight	0.241 lbs per foot
Mounting	Mounting Channel or Mounting Clips (Sold Separately)
Listing	Dry, Damp, or Wet Location UL2108, 67.1.9, 60.4, CSA C22.2 #9 UL8750, CSA250
Closet Rating	Up to 3.6 Watts per Foot Maximum
Temperature Ratings	Operating / Startup: -20° to 48°C (-4° to 120°F) Storage: -40° to 76°C (-40° to 170°F)
Installation Link	

ELECTRICAL

Dimming	0-10V, Forward / Reverse Phase, Lutron, DMX, DALI
Maximum Run (Class 1 Applications)	9' (13W), 10' (11W), 13' (9W), 17' (7W), 24' (5W), 36' (3W)
Maximum Run (Class 2 Applications)	6' (13W), 7' (11W), 9' (9W), 12' (7W), 17' (5W), 28' (3W)
Luminaire Voltage	24VDC

SPECIFY PRODUCT CODE | CHOOSE FROM DROP DOWNS

Series	Lens	Watts per Foot	Dimming	CCT LED	Listing	Finish	Luminaire Length
A8-ZOKI-SDL							
ZOKI Standard Low (A8-ZOKI-SDL)	Clear Lens (CL)	3 Watts (3W) 309 Lumens / ft*	Phase Dimming: Forward / Reverse Phase (PH)	2400K (24K)	Indoor (DRY)	Natural Silver* ⁷ (NA)	Specify Length in Feet & Inches Example: 7'8"
		5 Watts (5W) 515 Lumens / ft*	0-10V: 100% - 1% (10V)	2700K (27K)			
	50% Semi-Frosted Lens (SF)	7 Watts (7W) 721 Lumens / ft*	Hi-Lume 1% 3 Wire* ² (L3DA)	3000K (30K)	Outdoor (DAMP)	Polished (PA)	
		9 Watts (9W) 927 Lumens / ft*	Hi-Lume Premier 0.1% JA8* ³ (L3D0)	3500K (35K)			
	100% Frosted Lens (F)	11 Watts (11W) 1133 Lumens / ft*	JA8 0-10V (JA8-10V)	4000K (40K)	Outdoor* ⁶ (WET)	Satin / Silver (SA)	
13 Watts (13W) 1339 Lumens / ft*		DMX-512* ⁴ (DMX)	4500K (45K)	Black (BK)			
DALI* ⁵ (DALI)							
Leave Blank for Non-Dimming							

*¹ Lumens per Foot based on 35K CCT LED with Clear Lens (CL). Example: 103 Lumens x 3 Watts = 309 Lumens per Foot.

*² (L3DA) 40 watt max Lutron Hi-lume 1% 3 Wire #L3DA4U1UKL-CV240

*³ (L3D0) 96 watt max Hi-lume Premier 0.1% #L3D0-96W24V-U

*⁴ Default DMX address of each luminaire is 001. Consult third party DMX commissioner to modify at time of installation.

*⁵ DALI commissioning to be performed by a third party at time of installation. ALUZ does not provide DALI commissioning.

*⁶ Run lengths are required for Wet Location Products. Provide run lengths at time of order.

*⁷ Default finish is Natural Silver (NA) if left blank.



A8 Series | LED Tape

ZOKI Standard Low

(A8-ZOKI-SDL)

TYPE

LAMP FEATURES

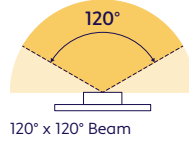
Lamp Type	LEDs
CRI	> 95
Efficacy (Based on 35K CCT LED)	103 Lumens per Watt

LAMP SPECIFICATIONS

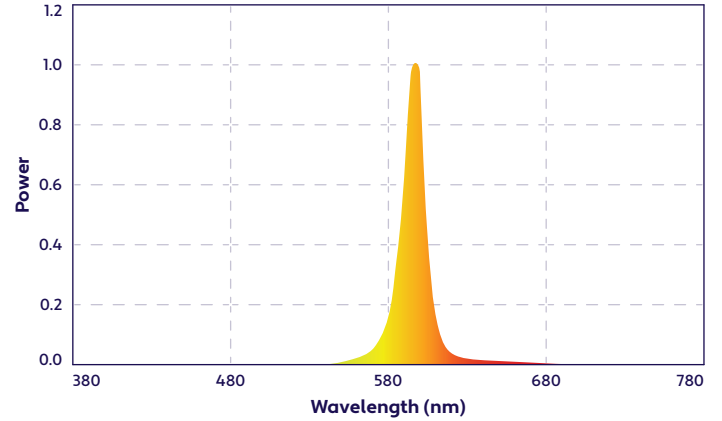
Lamp Number	Correlated Color Temperature / Description	Efficacy (Lumens per Watt)	L70 LED Life
24K	2400 Kelvin (Incandescent White)	90	60,000 hrs.
27K	2700 Kelvin (Warm White)	101	
30K	3000 Kelvin (Warm White)	100	
35K	3500 Kelvin (Neutral White)	103	
40K	4000 Kelvin (Neutral White)	105	
45K	4500 Kelvin (Neutral White)	102	40,000 hrs.
R	Red (621nm)		
G	Green (525nm)		
B	Blue (470nm)		
A	Amber (590nm)		

To calculate Lumens per Foot, multiply Efficacy by Watts per Foot.
Example: 103 Lumens per Watt x 3 Watts per Foot = 309 Lumens per Foot.

BEAM ANGLE



SPECTRAL POWER DISTRIBUTION AMBER LED (590nm) TURTLE FRIENDLY

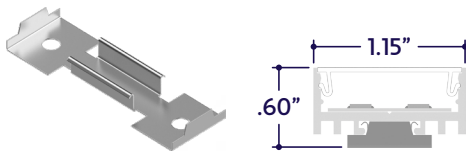


DRIVERS

Dimming Selection	Product Code	Link to Specification Sheet / URL
Phase Dimming: Forward Phase / Reverse Phase	(PH)	
0-10V: 100% - 1%	(10V)	
Hi-Lume 1% 3 Wire	(L3DA)	
Hi-Lume Premier 0.1% JA8	(L3D0)	
JA8 0-10V	(JA8-10V)	
DMX-512	(DMX)	
DALI	(DALI)	

MOUNTING OPTIONS (Sold Separately)

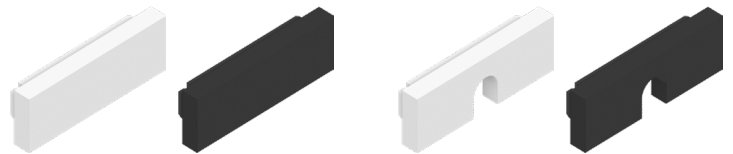
Note: Mounting clips are only available in Natural Silver Finish, unless otherwise specified.



Part #	Qty.
A8-ZOKI-SDL-MC	

Note: Use 1 mounting clip per 2', rounded up.
 Click on image to see cut sheet for additional details.

END CAPS (Sold Separately)



End Cap
(A8-ZOKI-SDL-EC-X)
 X = Specify Finish: White (WH) or Black (BK)

Part #	Qty.
A8-ZOKI-SDL-EC-WH	
A8-ZOKI-SDL-EC-BK	

Note: Default Finish is Black (BK) if unspecified.

End Cap with Exit Hole
(A8-ZOKI-SDL-EC-H-X)
 X = Specify Finish: White (WH) or Black (BK)

Part #	Qty.
A8-ZOKI-SDL-EC-H-WH	
A8-ZOKI-SDL-EC-H-BK	

Note: Default Finish is Black (BK) if unspecified.

1170 N Red Gum St, Anaheim, CA 92806

aluz.lighting | info@aluz.lighting | 866.ALUZ.LTG | 714.535.7900

© ALUZ All Rights Reserved. ALUZ reserves the right to make changes or withdraw specifications without prior notice.

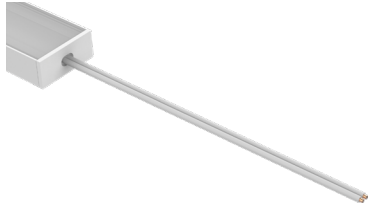
Specification Submittal

Page 2 of 5

7 / 11 / 2024 / Rev 9

DRY CONNECTORS (Sold Separately)

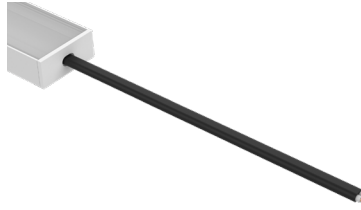
Note: Connectors are factory assembled to each run length. Connectors are subject to change without notice.



Dry Power Connector
(20/2 Gauge Wire)
(A8-ZOKI-SDL-PC-DRY-X)
X = Specify Length, 36" Default, 25' Maximum

Part #	Length	Qty.
A8-ZOKI-SDL-PC-DRY-	36"	
A8-ZOKI-SDL-PC-DRY-		

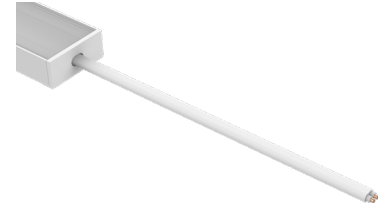
Note: Specify 1 Power Connector for each lead required. Power Connectors are factory assembled to each length.



Dry Power Connector with Black Jacket
(20/2 Gauge Wire)
(A8-ZOKI-SDL-PC-DRY-BK-X)
X = Specify Length, 36" Default, 25' Maximum

Part #	Length	Qty.
A8-ZOKI-SDL-PC-DRY-BK-	36"	
A8-ZOKI-SDL-PC-DRY-BK-		

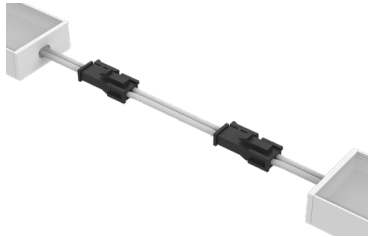
Note: Specify 1 Power Connector for each lead required. Power Connectors are factory assembled to each length.



Dry Power Connector with White Jacket
(20/2 Gauge Wire)
(A8-ZOKI-SDL-PC-DRY-WH-X)
X = Specify Length, 36" Default, 25' Maximum

Part #	Length	Qty.
A8-ZOKI-SDL-PC-DRY-WH-	36"	
A8-ZOKI-SDL-PC-DRY-WH-		

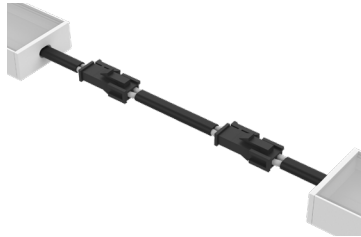
Note: Specify 1 Power Connector for each lead required. Power Connectors are factory assembled to each length.



Dry Continuous Connector
(20/2 Gauge Wire)
(A8-ZOKI-SDL-CC-DRY-X)
X = Specify Length, 3" Default

Part #	Length	Qty.
A8-ZOKI-SDL-CC-DRY-	3"	
A8-ZOKI-SDL-CC-DRY-		

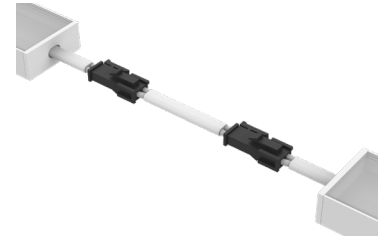
Note: Specify Continuous Connectors to traverse a gap or obstacle. Continuous Connectors are factory assembled to specified lengths.



Dry Continuous Connector with Black Jacket
(20/2 Gauge Wire)
(A8-ZOKI-SDL-CC-DRY-BK-X)
X = Specify Length, 3" Default

Part #	Length	Qty.
A8-ZOKI-SDL-CC-DRY-BK-	3"	
A8-ZOKI-SDL-CC-DRY-BK-		

Note: Specify Continuous Connectors to traverse a gap or obstacle. Continuous Connectors are factory assembled to specified lengths.



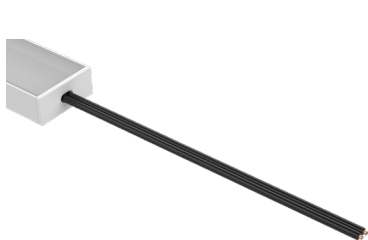
Dry Continuous Connector with White Jacket
(20/2 Gauge Wire)
(A8-ZOKI-SDL-CC-DRY-WH-X)
X = Specify Length, 3" Default

Part #	Length	Qty.
A8-ZOKI-SDL-CC-DRY-WH-	3"	
A8-ZOKI-SDL-CC-DRY-WH-		

Note: Specify Continuous Connectors to traverse a gap or obstacle. Continuous Connectors are factory assembled to specified lengths.

WET CONNECTORS (Sold Separately)

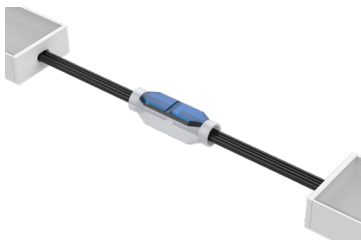
Note: Connectors are factory assembled to each run length. Connectors are subject to change without notice.



Wet Power Connector
(20/2 Gauge Wire)
(A8-ZOKI-SDL-PC-WET-X)
X = Specify Length, 36" Default, 25' Maximum

Part #	Length	Qty.
A8-ZOKI-SDL-PC-WET-	36"	
A8-ZOKI-SDL-PC-WET-		

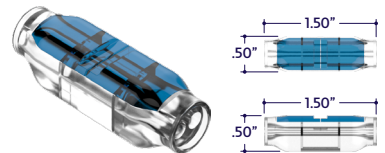
Note: Specify 1 Power Connector for each lead required. Power Connectors are factory assembled to each length.



Wet Continuous Connector
(20/2 Gauge Wire)
(A8-ZOKI-SDL-CC-WET-X)
X = Specify Length, 3" Default

Part #	Length	Qty.
A8-ZOKI-SDL-CC-WET-	3"	
A8-ZOKI-SDL-CC-WET-		

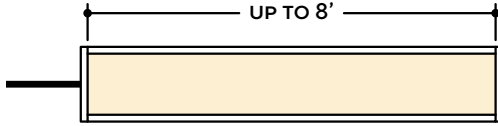
Note: Specify Continuous Connectors to traverse a gap or obstacle. Continuous Connectors are factory assembled to specified lengths.



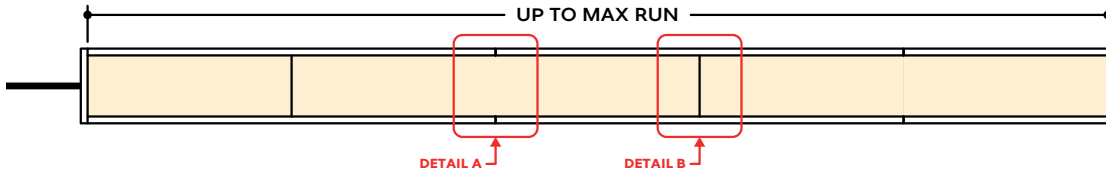
Part #	Qty.
A8-SC-2P-WET	

DESIGN GUIDELINES

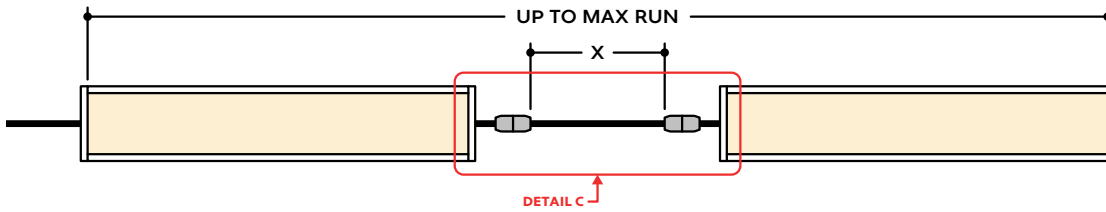
Individual Fixture



Continuous Run (Dry Location)



Runs with Continuous Connector (Dry Location)

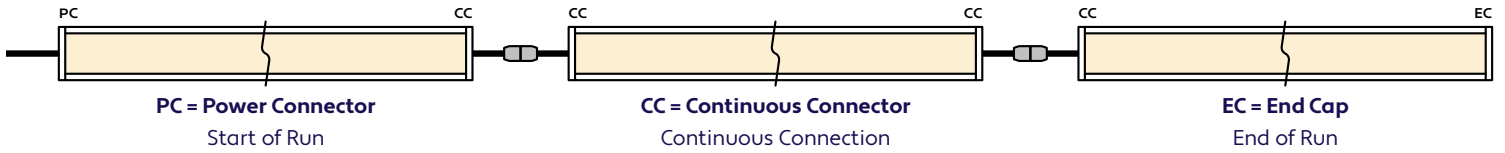


KEY

- Detail A Two Extrusions Meet:** Two extrusion segments meet, held together by a mounting clip. Refer to installation instructions for additional details.
- Detail B Two Lenses Meet:** Lenses are staggered so that the lens always overlaps where two extrusion segments meet. Refer to installation instructions for additional details.
- Detail C Dry Continuous Connector:** Used to span a corner or traverse a gap, corner, or obstacle in a dry location installation area.

Note: Drawings not to scale. Product may differ from examples shown.

CONNECTION SEQUENCE

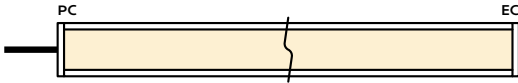


- Specifying a layout is not required to place an order.
- Configuration code applies to full length ordered and will be built per the Continuous Run models on Design Guidelines.
- Connector type subject to change based on availability and listing. Refer to Design Guidelines for details.

HOW TO SPECIFY CONFIGURATIONS

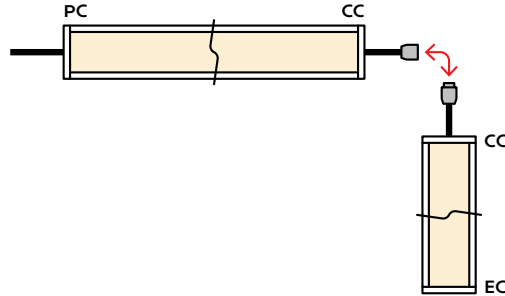
Example: 20' Straight Run

- 1x A8-ZOKI-SDL-CL-3W-10V-35K-DRY-NA-20'-PC-EC



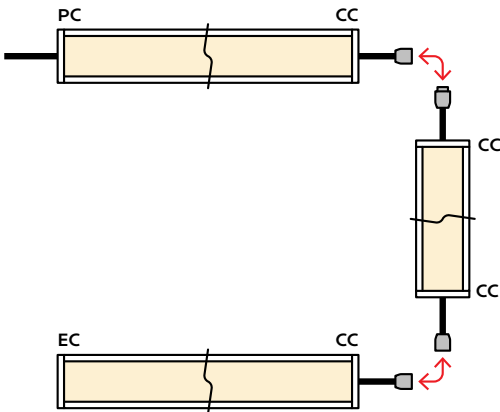
Example: 25' L-Shaped Run

- 1x A8-ZOKI-SDL-CL-3W-10V-35K-DRY-NA-12'-PC-CC
- 1x A8-ZOKI-SDL-CL-3W-10V-35K-DRY-NA-6'-CC-EC



Example: 30' U-Shaped Run

- 1x A8-ZOKI-SDL-CL-3W-10V-35K-DRY-NA-6'-PC-CC
- 1x A8-ZOKI-SDL-CL-3W-10V-35K-DRY-NA-18'-CC-CC
- 1x A8-ZOKI-SDL-CL-3W-10V-35K-DRY-NA-6'-CC-EC



Example: 28' Rectangle Shaped Run

- 1x A8-ZOKI-SDL-CL-3W-10V-35K-DRY-NA-11'-PC-CC
- 1x A8-ZOKI-SDL-CL-3W-10V-35K-DRY-NA-3'-CC-CC
- 1x A8-ZOKI-SDL-CL-3W-10V-35K-DRY-NA-11'-CC-CC
- 1x A8-ZOKI-SDL-CL-3W-10V-35K-DRY-NA-3'-CC-EC

