

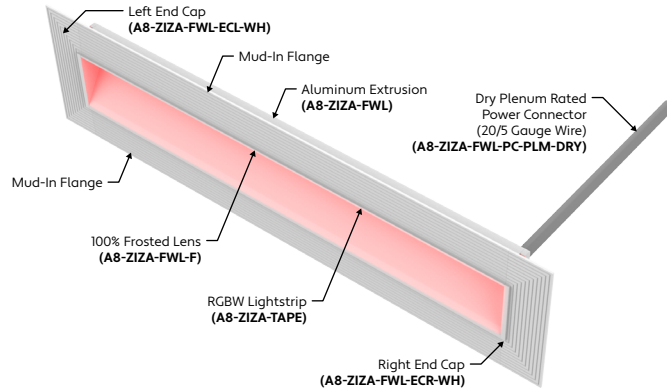


A8 Series | LED Tape

ZIZA Flush Wall

(A8-ZIZA-FWL)

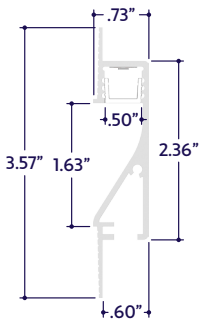
TYPE



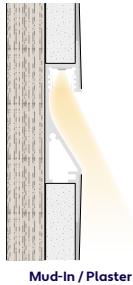
GENERAL FEATURES

Applications	Mud-In, Accent, Decorative, Surface, Recessed Lighting
Lens	50% Semi-Frosted or 100% Frosted
Viewing Angle	120°
Length	Built to Order (+/- 1/8" Tolerance)
Construction	Aluminum Extrusion
Field Cutting	Dry, Damp, and Wet Location Field Cuttable
Weight	0.81 lbs per foot
Mounting	Mud-In
Listing	Dry, Damp, or Wet Location UL2108, 67.1.9, 60.4, CSA C22.2 #9 UL8750, CSA250
Driver	Remote (Sold Separately)
Closet Rating	Up to 4.5 Watts per Foot Maximum
Temperature Ratings	Operating / Startup: -20° to 48°C (-4° to 120°F) Storage: -40° to 76°C (-40° to 170°F)
Installation Link	

END VIEWS / DIMENSIONS



MOUNTING OPTION



ELECTRICAL

Dimming	DMX
Maximum Run (Class 1 Applications)	21' (5.5W) 26' (4.5W)
Maximum Run (Class 2 Applications)	15' (5.5W) 18' (4.5W)
Luminaire Voltage	24VDC

SPECIFY PRODUCT CODE | CHOOSE FROM DROP DOWNS

Series	Lens	Watts per Foot	Dimming	LED	Listing	Finish	Luminaire Length
A8-ZIZA-FWL			DMX			WH	
ZIZA Flush Wall (A8-ZIZA-FWL)	50% Semi-Frosted Lens (SF)	4.5 Watts (4.5W)	DMX-512*1 (DMX)	Red, Green, Blue, 3000K White*2 (RGBW)	Indoor (DRY)	White* (WH)	Specify Length in Feet & Inches Example: 7'8"
	100% Frosted Lens: Line of Light (F)	5.5 Watts (5.5W)		Red, Green, Blue, 6000K White (RGBCW)	Outdoor (DAMP)		
					Outdoor*3 (WET)		

- *1 Default DMX address of each luminaire is 001. Consult third party DMX commissioner to modify at time of installation.
- *2 Default LED is RGBW if left blank.
- *3 Run lengths are required for Wet Location products. Provide run lengths at time of order.
- *4 Default finish is White (WH) if left blank.

1170 N Red Gum St, Anaheim, CA 92806

aluz.lighting | info@aluz.lighting | 866.ALUZ.LTG | 714.535.7900

© ALUZ All Rights Reserved. ALUZ reserves the right to make changes or withdraw specifications without prior notice.

Specification Submittal

Page 1 of 4

5 / 21 / 2024 / Rev 8



LAMP FEATURES

Lamp Type	Color Changing LEDs: Red, Green, Blue, White
Efficacy (Based on White Only @ 100% Output)	75 Lumens per Watt

LAMP SPECIFICATIONS

Lamp Number	Description	L70 LED Life
RGBW	Color Changing: Red, Green, Blue, 3000K White	50,000 hrs.
RGBCW	Color Changing: Red, Green, Blue, 6000K Cool White	

LENS / OPTICS APPEARANCE

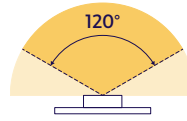


50% Semi-Frosted Lens (SF)
Slight Diode Image
12.5% Light Loss



100% Frosted Lens (F)
No Diode Image: Line of Light
25% Light Loss

BEAM ANGLE



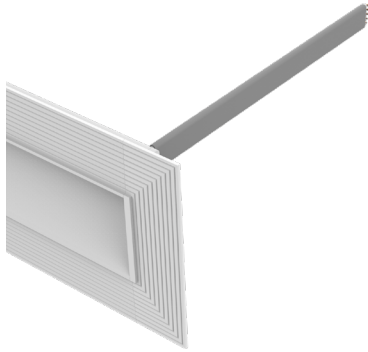
120° x 120° Beam

DRIVERS

Dimming Selection	Product Code	Link to Specification Sheet / URL
DMX-512	(DMX)	

CONNECTORS (Sold Separately)

Note: Connectors are factory assembled to each run length. Connectors are subject to change without notice.



Dry Plenum Rated Power Connector
(20/5 Gauge Wire)
(A8-ZIZA-FWL-PC-PLM-DRY-X)
X = Specify Length, 36" Default, 25' Maximum

Part #	Length	Qty.
A8-ZIZA-FWL-PC-PLM-DRY-	36"	
A8-ZIZA-FWL-PC-PLM-DRY-		

Note: Specify 1 Power Connector for each lead required.
Power Connectors are factory assembled to each length.



Wet Power Connector
(20/5 Gauge Wire)
(A8-ZIZA-FWL-PC-WET-X)
X = Specify Length, 36" Default, 25' Maximum

Part #	Length	Qty.
A8-ZIZA-FWL-PC-WET-	36"	
A8-ZIZA-FWL-PC-WET-		

Note: Specify 1 Power Connector for each lead required.
Power Connectors are factory assembled to each length.

END CAPS (Sold Separately)



Left End Cap
(A8-ZIZA-FWL-ECL-WH)

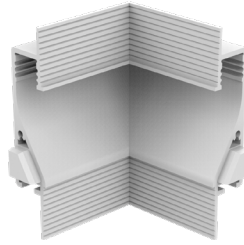
Part #	Qty.
A8-ZIZA-FWL-ECL-WH	



Right End Cap
(A8-ZIZA-FWL-ECR-WH)

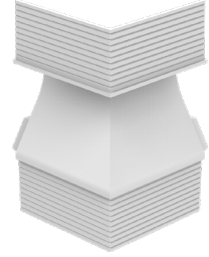
Part #	Qty.
A8-ZIZA-FWL-ECR-WH	

MITERED CORNERS (Sold Separately)



90° Internal Corner
(A8-ZIZA-FWL-90D-IN)

Part #	Qty.
A8-ZIZA-FWL-90D-IN	



90° External Corner
(A8-ZIZA-FWL-90D-EX)

Part #	Qty.
A8-ZIZA-FWL-90D-EX	

DMX ACCESSORIES (Sold Separately)



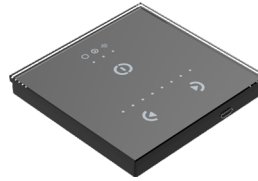
Part #	Qty.
DRV100-E-UNV-24VDC-DMX-DRY-RGBW	

Note: Use 1 Driver for each run up to 100 Watts. Click on image to see Specification Submittal.



Part #	Qty.
CTRL-DMX-RGBX	

Note: Use 1 Decoder for each run up to 180 Watts. Not required if using DRV100-E.



Part #	Qty.
CTRL-DMX-128C	

Note: Controls up to 128 DMX Channels, or up to 32 RGBW light fixtures.



Part #	Qty.
CTRL-DMX-1024C	

Note: Controls up to 1024 DMX Channels, or up to 256 RGBW light fixtures.

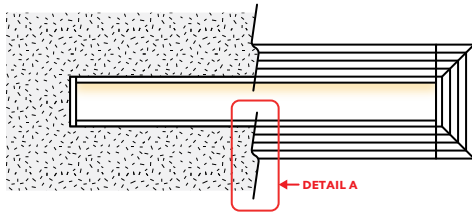


DESIGN GUIDELINES

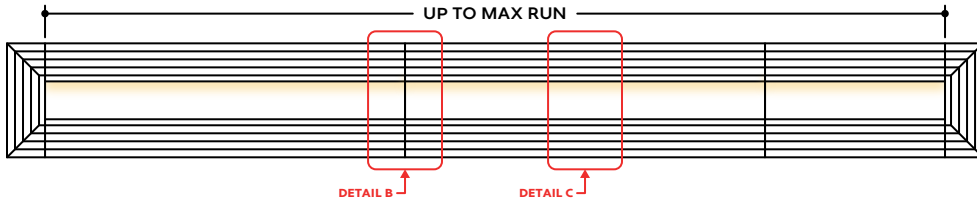
Individual Fixture



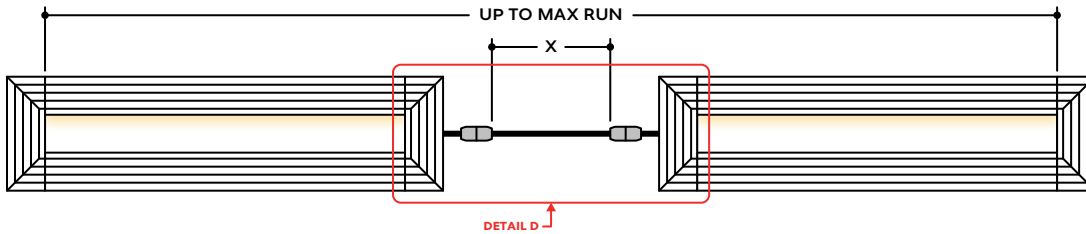
Individual Fixture with Mud-In



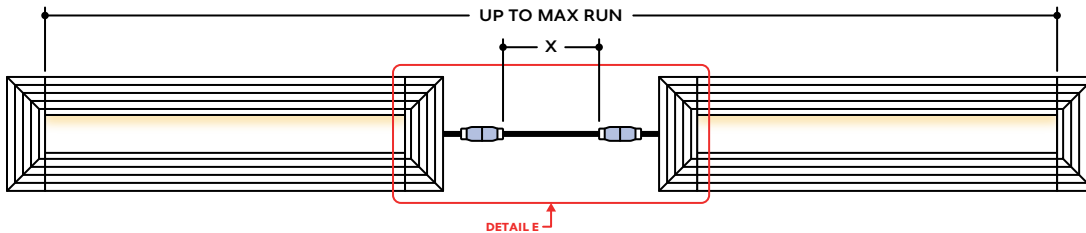
Continuous Run



Runs with Continuous Connector (Dry Location)



Runs with Continuous Connector (Wet Location)



KEY

- Detail A** **Mud-In:** Plaster is used to cover the flanges of the extrusion, leaving a flush appearance. Refer to installation instructions for details.
- Detail B** **Two Extrusions Meet:** Two extrusion segments meet. Refer to installation instructions for additional details.
- Detail C** **Two Lenses Meet:** Lenses are staggered so that the lens always overlaps where two extrusion segments meet. Refer to installation instructions for additional details.
- Detail D** **Dry Continuous Connector:** Used to span a corner or traverse a gap, corner, or obstacle in a dry location installation area. For Mud-In applications, the connection is located behind the mounting surface, such as drywall.
- Detail E** **Wet Continuous Connector:** Used to span a corner or traverse a gap, corner, or obstacle in a wet location installation area. For Mud-In applications, the connection is located behind the mounting surface.

Note: Drawings not to scale. Product may differ from examples shown.