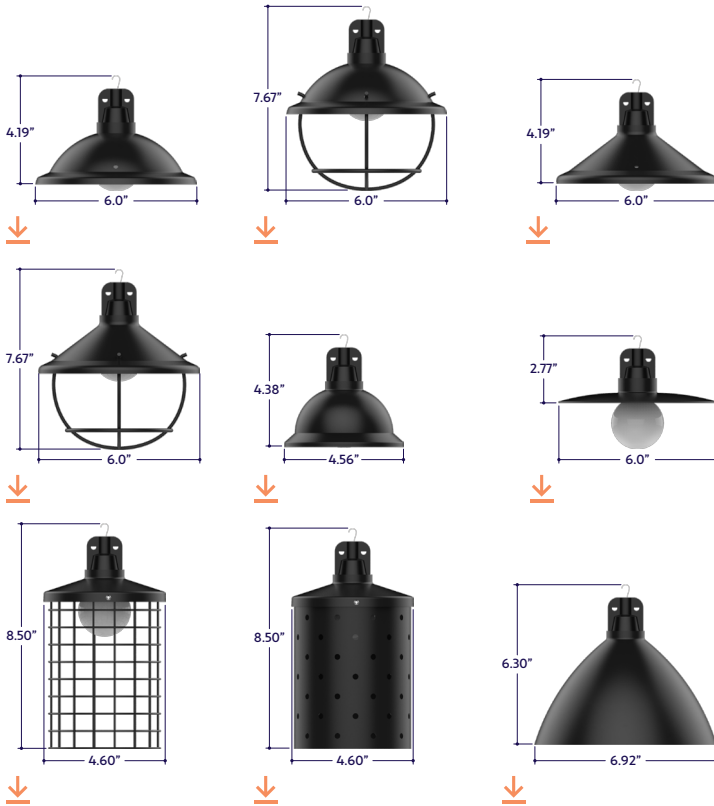


GENERAL FEATURES

| | |
|--------------------------|--|
| Applications | Indoor and Outdoor |
| Length | Built to Order (+/- 1/8" Tolerance) |
| Finish | Black |
| Feed | Standard 6' Power Lead |
| Strain Relief | Cable (Included, Not for Mounting) |
| Mounting | Mounting Aircraft Cable (Sold Separately) |
| Listing | Dry or Wet Location ANSI/UL1598 CSA 22.2 No. 250.0-04, 2nd Edition |
| Options | Mesh, Canopies, or Cages |
| UV Rating | Sun Light Resistance |
| Installation Link | |

CANOPY OPTIONS (Click Image to See Individual Submittal)



ELECTRICAL

| | |
|------------------------------|---|
| Dimming | Forward Phase |
| Maximum Run | 250' without Canopies 100' with Canopies |
| System | 20 Amps (12 Gauge Wire) |
| Wattage | 1W or 3W Lamps (+/- 0.25W Tolerance) |
| Operating Temperature | -25°C to +45°C (-13°F to +113°F) |
| Luminaire Voltage | 120V |

SPECIFY PRODUCT CODE | CHOOSE FROM DROP DOWNS

| Series | Spacing | Lamp | Dimming | Listing | Luminaire Length | |
|---------------------------------------|-----------------------------|------------------------------------|------------------------------------|------------------------------------|-----------------------------|---------------|
| Standard (No Canopy) (A5-ZOZO-STN) | Bell Canopy (A5-ZOZO-BLL) | 12" on Center (12") | 2700K, G-Shape (27K-GSF) | 5000K, G-Shape Filament (50K-GSFL) | Forward Phase (DM) | Indoor (DRY) |
| | Flat Canopy (A5-ZOZO-FLT) | 18" on Center (18") | 5000K, G-Shape (50K-GSF) | 2700K, S-Shape Frosted (27K-SSF) | Leave Blank for Non-Dimming | |
| Round Canopy (A5-ZOZO-RND) | 24" on Center (24") | Red, G-Shape (R-GSF) | 5000K, S-Shape Frosted (50K-SSF) | 5000K, S-Shape Clear (50K-SSC) | | Outdoor (WET) |
| | 36" on Center (36") | Green, G-Shape (G-GSF) | Orange, S-Shape Frosted (OR-SSF) | 2700K, S-Shape Clear (27K-SSC) | | |
| Round Canopy with Cage (A5-ZOZO-RNC) | 48" on Center (48") | Blue, G-Shape (B-GSF) | 2700K, S-Shape Clear (27K-SSC) | 5000K, S-Shape Clear (50K-SSC) | | |
| | 60" on Center (60") | Amber, G-Shape (A-GSF) | 2400K, G-Shape Filament (24K-GSFL) | Red, S-Shape Clear (R-SSC) | | |
| Cone Canopy (A5-ZOZO-CON) | Barrel Canopy (A5-ZOZO-BRL) | 2700K, G-Shape Filament (27K-GSFL) | Green, S-Shape Clear (G-SSC) | 3000K, G-Shape Filament (30K-GSFL) | | |
| | Hat Canopy (A5-ZOZO-HAT) | 3500K, G-Shape Filament (35K-GSFL) | Blue, S-Shape Clear (B-SSC) | 3500K, G-Shape Filament (35K-GSFL) | | |
| Cone Canopy with Cage (A5-ZOZO-COC) | | 4000K, G-Shape Filament (40K-GSFL) | Amber, S-Shape Clear (A-SSC) | No Lamps* (NL) | | |
| | | | | | | |

* Lighting will be shipped without lamps.

LAMP OPTIONS

Lamp Image & Dimensions



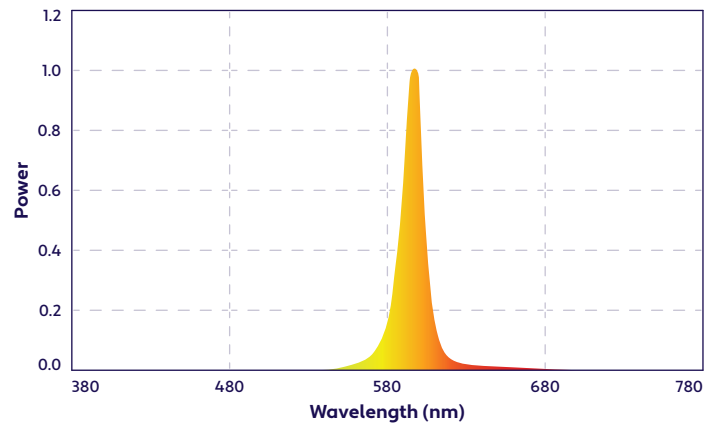
| Lamp Name & Product Code | G-Shaped Lamp (GSF) | G-Shaped Filament Lamp (GSFL) | S-Shaped Lamp (SSF) | S-Shaped Clear Lamp (SSC) |
|--------------------------|----------------------|-------------------------------|---------------------|---------------------------|
| Lamp Type | Standard LED | Filament LED | Standard LED | Standard LED |
| Material | Polymer Plastic | Shatterproof Glass | Polymer Plastic | Polymer Plastic |
| Lamp Life | 20,000 hrs. | 25,000 hrs. | 20,000 hrs. | 20,000 hrs. |
| CRI | 80 | 90 | 75 | 80 |
| Lumens | 42 | 256 | 42 | 42 |
| Beam Angle | 360° | 360° | 360° | 360° |
| Appearance | Frosted | Clear | Frosted | Clear, Textured |
| CCT & Colors | 27K, 50K, R, G, B, A | 24K, 27K, 30K, 35K, 40K, 50K | 27K, 50K, OR | 27K, 50K, R, G, B, A |
| Lamp Watts | 1W | 3W | 1W | 1W |

Note: Lamp dimensions are subject to change without notice. +/- 0.25 Wattage Tolerance. CRI is based on 5.0K GSF, 3.0K GSFL, 5.0K SSF, and 5.0K SSC.

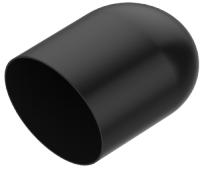
LAMP SPECIFICATIONS

| Lamp Number | Correlated Color Temperature | Description | Available Lamp Shapes |
|-------------|------------------------------|--------------------|-----------------------------|
| 24K | 2400 Kelvin | Incandescent White | (GSFL) |
| 27K | 2700 Kelvin | Warm White | (GSF), (GSFL), (SSF), (SSC) |
| 30K | 3000 Kelvin | Warm White | (GSFL) |
| 35K | 3500 Kelvin | Neutral White | (GSFL) |
| 40K | 4000 Kelvin | Neutral White | (GSFL) |
| 50K | 5000 Kelvin | Cool White | (GSF), (GSFL), (SSF), (SSC) |
| R | Red | 621nm | (GSF), (SSC) |
| G | Green | 525nm | (GSF), (SSC) |
| B | Blue | 470nm | (GSF), (SSC) |
| A | Amber | 590nm | (GSF), (SSC) |
| OR | Orange | 610nm | (SSF) |

SPECTRAL POWER DISTRIBUTION AMBER LED (590nm) TURTLE FRIENDLY



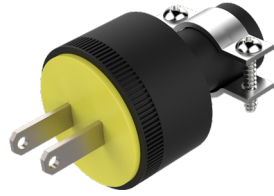
ACCESSORIES (Sold Separately)



Vinyl Plastic End Cap
75A Durometer
(A5-ZOZO-EC)

| Part # | Qty. |
|------------|------|
| A5-ZOZO-EC | |

Note: Use 1 End Cap at the end of each run.



120V Power Plug
Rubber Casing
(A5-ZOZO-PP)

| Part # | Qty. |
|------------|------|
| A5-ZOZO-PP | |

Note: Use 1 Power Plug for each run that will not be hardwired.

MOUNTING ACCESSORIES (Sold Separately - Click Image to See Cut Sheet, If Applicable)



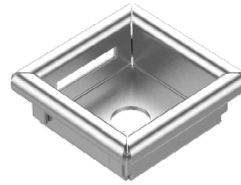
| Part # | Length | Qty. |
|----------------|--------|------|
| A5-ZOZO-AC-18- | | |

Note: Order cable to desired length. Order in 50' increments up to 500' per reel.



| Part # | Qty. |
|----------------|------|
| A5-ZOZO-CL-18- | |

Note: Use 1 Cable Lock per run, if using this method. Refer to installation instructions for alternative mounting options.



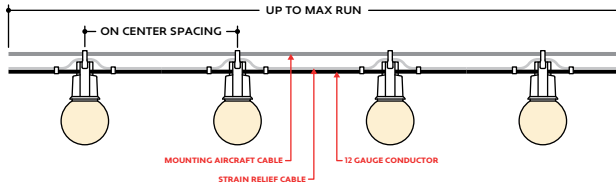
Mounting Plate
Stainless Steel
(A5-ZOZO-MP)

| Part # | Qty. |
|------------|------|
| A5-ZOZO-MP | |

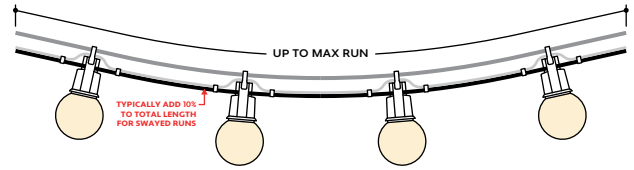
Note: Use Mounting Plates when mounting to a ceiling. Refer to installation instructions for details.

DESIGN GUIDELINES

Straight Run

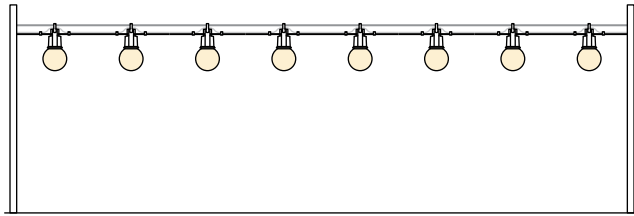


Swayed Run

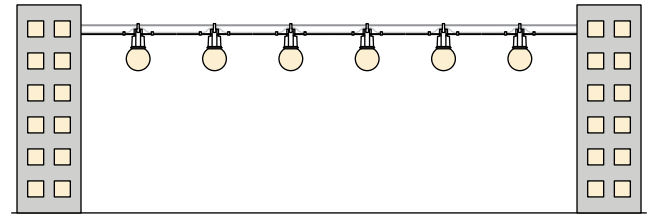


INSTALLATION OPTIONS

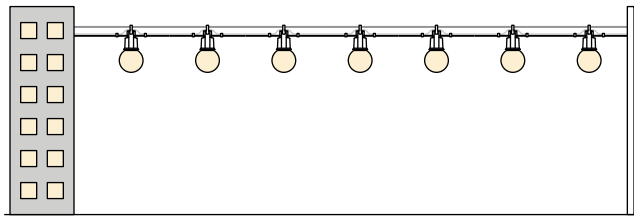
Pole to Pole



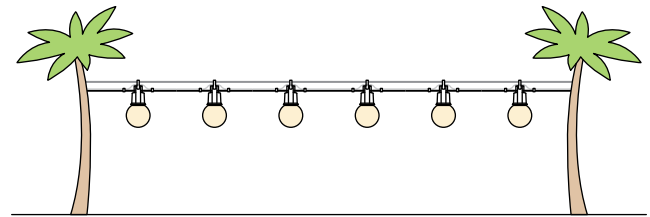
Building to Building



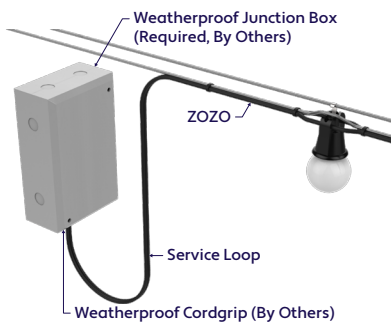
Building to Pole



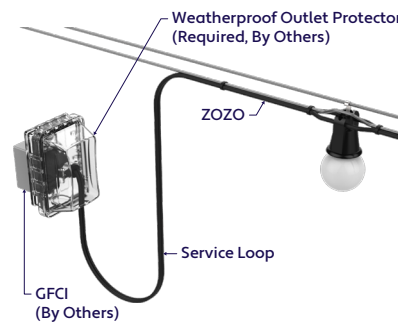
Tree to Tree



HARDWIRE INSTALLATION (Wet Location)



POWER PLUG INSTALLATION (Wet Location)



INSTALLATION RECOMMENDATIONS

- Determine weight of string light that will be used.
- Determine length of string light and multiply by weight.
- An engineer must choose the proper aircraft cable to handle the tension, based on length and weight to prevent product from sagging.
- An engineer must determine the strength of the structure where the cable will attach, based on tension calculation from previous step.
- If installing on a pole, check with pole manufacturer to confirm the pole can handle the tension.
- String light is hung to the above aircraft cable using the hooks. Secure hooks to aircraft cable by crimping or using stainless steel tie wraps.
- The supplied aircraft cable is designed to prevent strain on the wire. An additional aircraft cable is required to hang string light.

WEIGHT PER FOOT

| Series | Spacing Selection | Approximate Weight ^{∗1} |
|--------------------------------|---------------------|----------------------------------|
| ZOZO Standard (A5-ZOZO-STN) | 12" on Center (12") | 0.30 lbs per foot |
| | 18" on Center (18") | 0.24 lbs per foot |
| | 24" on Center (24") | 0.21 lbs per foot |
| | 36" on Center (36") | 0.18 lbs per foot |
| | 48" on Center (48") | 0.17 lbs per foot |
| | 60" on Center (60") | 0.16 lbs per foot |

^{∗1} Includes Wire, Socket, Lamp, and Strain Relief Cable. Mounting Aircraft Cable Not Included.