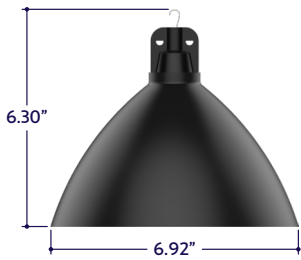


END VIEWS / DIMENSIONS



GENERAL FEATURES

Applications	Indoor and Outdoor
Length	Built to Order (+/- 1/8" Tolerance)
Canopy Material	Aluminum
Finish	Black
Feed	Standard 6' Power Lead
Strain Relief	Cable (Included, Not for Mounting)
Mounting	Mounting Aircraft Cable (Sold Separately)
Listing	Dry or Wet Location ANSI/UL1598 CSA 22.2 No. 250.0-04, 2nd Edition
UV Rating	Sun Light Resistance
Bug Rating	B0-U0-G0
Dark Sky	IDA Dark Sky Compliant (G-Shaped Lamps with 24K, 27K, or 30K LEDs must be used to meet IDA Certification for Dark Sky Compliance)
Installation Link	

ELECTRICAL

Dimming	Forward Phase
Maximum Run	100'
System	20 Amps (12 Gauge Wire)
Wattage	1W or 3W Lamps (+/- 0.25W Tolerance)
Operating Temperature	-25°C to +45°C (-13°F to +113°F)
Luminaire Voltage	120V

SPECIFY PRODUCT CODE | CHOOSE FROM DROP DOWNS

Series	Spacing	Lamp	Dimming	Listing	Canopy Finish Inside	Canopy Finish Outside	Luminaire Length		
A5-ZOZO-HAT									
ZOZO Hat (A5-ZOZO-HAT)	12" on Center (12")	2700K, G-Shape (27K-GSF)	5000K, G-Shape Filament (50K-GSFL)	Forward Phase (DM)	Indoor (DRY)	Natural Silver (NA)	Natural Silver (NA)		
	18" on Center (18")	5000K, G-Shape (50K-GSF)	2700K, S-Shape Frosted (27K-SSF)	Leave Blank for Non-Dimming	Outdoor (WET)	Polished (PA)	Polished (PA)		
	24" on Center (24")	Red, G-Shape (R-GSF)	5000K, S-Shape Frosted (50K-SSF)						
	36" on Center (36")	Green, G-Shape (G-GSF)	Orange, S-Shape Frosted (OR-SSF)						
	48" on Center (48")	Blue, G-Shape (B-GSF)	2700K, S-Shape Clear (27K-SSC)						
	60" on Center (60")	Amber, G-Shape (A-GSF)	5000K, S-Shape Clear (50K-SSC)						
		2400K, G-Shape Filament (24K-GSFL)	Red, S-Shape Clear (R-SSC)					Bronze (BR)	Bronze (BR)
		2700K, G-Shape Filament (27K-GSFL)	Green, S-Shape Clear (G-SSC)					Silver (SR)	Silver (SR)
		3000K, G-Shape Filament (30K-GSFL)	Blue, S-Shape Clear (B-SSC)					Red (RD)	Red (RD)
		3500K, G-Shape Filament (35K-GSFL)	Amber, S-Shape Clear (A-SSC)						
	4000K, G-Shape Filament (40K-GSFL)	No Lamps* (NL)							

Note: G-Shaped Lamps with 24K, 27K, or 30K LEDs must be used to meet IDA Certification for Dark Sky Compliance.

- *¹ Lighting will be shipped without lamps.
- *² Standard Canopy Inside / Outside Finish is Black.

LAMP OPTIONS

Lamp Image & Dimensions



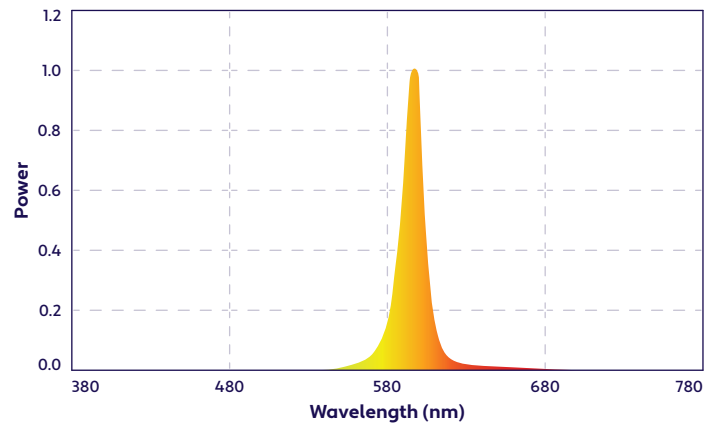
Lamp Name & Product Code	G-Shaped Lamp (GSF)	G-Shaped Filament Lamp (GSFL)	S-Shaped Lamp (SSF)	S-Shaped Clear Lamp (SSC)
Lamp Type	Standard LED	Filament LED	Standard LED	Standard LED
Material	Polymer Plastic	Shatterproof Glass	Polymer Plastic	Polymer Plastic
Lamp Life	20,000 hrs.	25,000 hrs.	20,000 hrs.	20,000 hrs.
CRI	80	90	75	80
Lumens	42	256	42	42
Beam Angle	360°	360°	360°	360°
Appearance	Frosted	Clear	Frosted	Clear, Textured
CCT & Colors	27K, 50K, R, G, B, A	24K, 27K, 30K, 35K, 40K, 50K	27K, 50K, OR	27K, 50K, R, G, B, A
Lamp Watts	1W	3W	1W	1W

Note: Lamp dimensions are subject to change without notice. +/- 0.25 Wattage Tolerance. CRI is based on 5.0K GSF, 3.0K GSFL, 5.0K SSF, and 5.0K SSC.

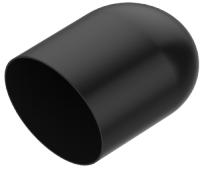
LAMP SPECIFICATIONS

Lamp Number	Correlated Color Temperature	Description	Available Lamp Shapes
24K	2400 Kelvin	Incandescent White	(GSFL)
27K	2700 Kelvin	Warm White	(GSF), (GSFL), (SSF), (SSC)
30K	3000 Kelvin	Warm White	(GSFL)
35K	3500 Kelvin	Neutral White	(GSFL)
40K	4000 Kelvin	Neutral White	(GSFL)
50K	5000 Kelvin	Cool White	(GSF), (GSFL), (SSF), (SSC)
R	Red	621nm	(GSF), (SSC)
G	Green	525nm	(GSF), (SSC)
B	Blue	470nm	(GSF), (SSC)
A	Amber	590nm	(GSF), (SSC)
OR	Orange	610nm	(SSF)

SPECTRAL POWER DISTRIBUTION AMBER LED (590nm) TURTLE FRIENDLY



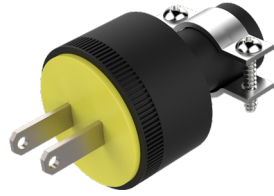
ACCESSORIES (Sold Separately)



Vinyl Plastic End Cap
75A Durometer
(A5-ZOZO-EC)

Part #	Qty.
A5-ZOZO-EC	

Note: Use 1 End Cap at the end of each run.



120V Power Plug
Rubber Casing
(A5-ZOZO-PP)

Part #	Qty.
A5-ZOZO-PP	

Note: Use 1 Power Plug for each run that will not be hardwired.

MOUNTING ACCESSORIES (Sold Separately - Click Image to See Cut Sheet, If Applicable)



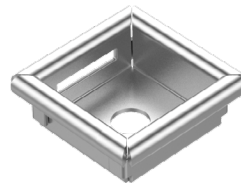
Part #	Length	Qty.
A5-ZOZO-AC-18-		

Note: Order cable to desired length. Order in 50' increments up to 500' per reel.



Part #	Qty.
A5-ZOZO-CL-18-	

Note: Use 1 Cable Lock per run, if using this method. Refer to installation instructions for alternative mounting options.



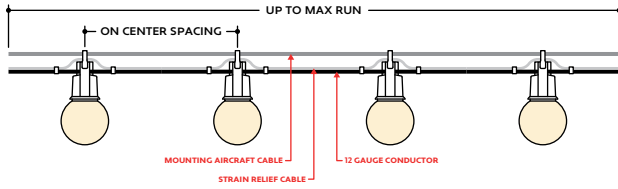
Mounting Plate
Stainless Steel
(A5-ZOZO-MP)

Part #	Qty.
A5-ZOZO-MP	

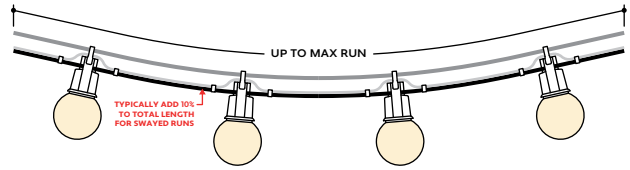
Note: Use Mounting Plates when mounting to a ceiling. Refer to installation instructions for details.

DESIGN GUIDELINES

Straight Run

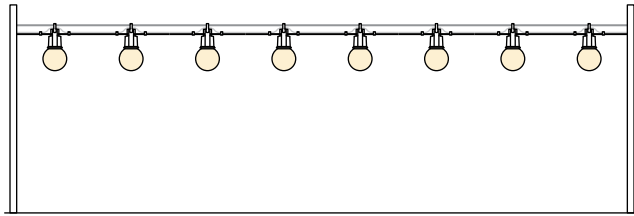


Swayed Run

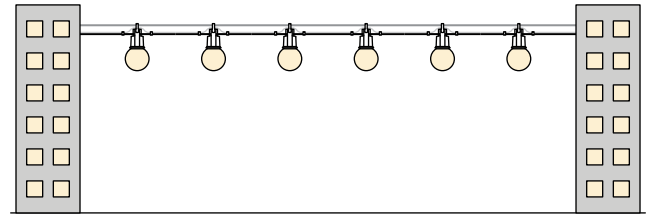


INSTALLATION OPTIONS

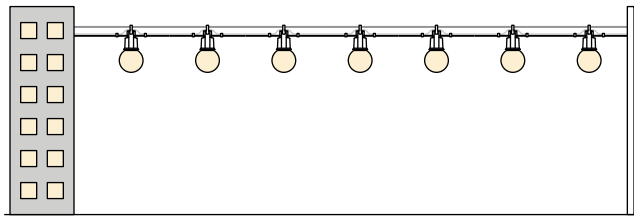
Pole to Pole



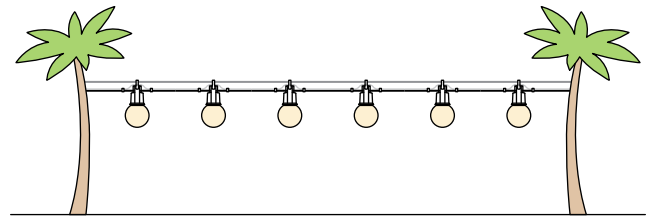
Building to Building



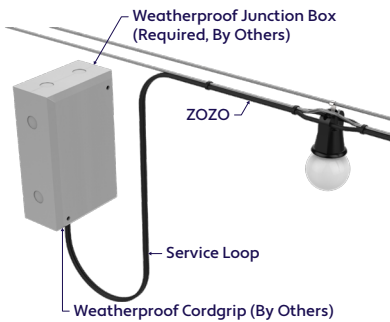
Building to Pole



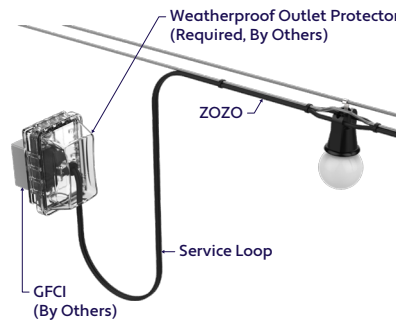
Tree to Tree



HARDWIRE INSTALLATION (Wet Location)



POWER PLUG INSTALLATION (Wet Location)



INSTALLATION RECOMMENDATIONS

- Determine weight of string light that will be used.
- Determine length of string light and multiply by weight.
- An engineer must choose the proper aircraft cable to handle the tension, based on length and weight to prevent product from sagging.
- An engineer must determine the strength of the structure where the cable will attach, based on tension calculation from previous step.
- If installing on a pole, check with pole manufacturer to confirm the pole can handle the tension.
- String light is hung to the above aircraft cable using the hooks. Secure hooks to aircraft cable by crimping or using stainless steel tie wraps.
- The supplied aircraft cable is designed to prevent strain on the wire. An additional aircraft cable is required to hang string light.

WEIGHT PER FOOT

Series	Spacing Selection	Approximate Weight ^{∗1}
ZOZO Hat Canopy (A5-ZOZO-HAT)	12" on Center (12")	0.79 lbs per foot
	18" on Center (18")	0.56 lbs per foot
	24" on Center (24")	0.45 lbs per foot
	36" on Center (36")	0.34 lbs per foot
	48" on Center (48")	0.29 lbs per foot
	60" on Center (60")	0.25 lbs per foot

^{∗1} Includes Wire, Socket, Lamp, Strain Relief Cable, and Canopy. Mounting Aircraft Cable Not Included.