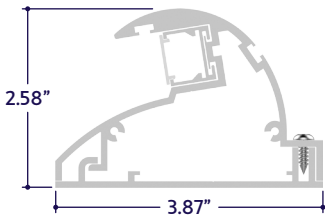


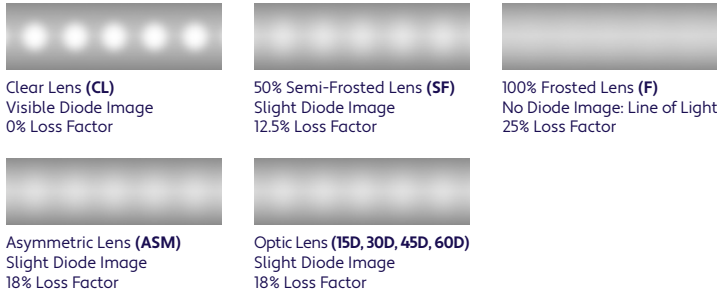
GENERAL FEATURES

Applications	Accent Lighting
Lens	Clear, 50% Semi-Frosted, or 100% Frosted
Optics & Asymmetric	15°, 30°, 45°, 60°, 120°, or Asymmetric Optics
Length	Built to Order (+/- 1.8" Tolerance)
Construction	Aluminum Extrusion
Weight	5 lbs per foot
Mounting	Mounting Clips (Sold Separately)
Listing	IP67 Location UL1598, CSA C22.2#250.0 UL8750, CSA250 UL2108, 67.1.9, 60.4, CSA C22.2 #9
Driver	Remote
Temperature Ratings	Operating / Startup: -20° to 48°C (-4° to 120°F) Storage: -40° to 76°C (-40° to 170°F)
Installation Link	

END VIEW / DIMENSIONS



LENS / OPTICS APPEARANCE



ELECTRICAL

Dimming	0-10V, Forward / Reverse Phase, Lutron, DMX, DALI
Maximum Run (Class 2 Applications)	36' (1.5W, 2W), 28' (3W), 21' (4W), 17' (5W), 14' (6W), 10' (8W), 7' (12W)
Luminaire Voltage	120V - 277V (UNV)

SPECIFY PRODUCT CODE | CHOOSE FROM DROP DOWNS

Series	Lens / Optics	Internal Louver	Finish	CCT LED	Watts per Foot	Dimming	Listing	Fixture Voltage	Fixture Length	
							IP67	UNV		
A4-ZERA-PAT							IP67	UNV		
ZERA Path (A4-ZERA-PAT)	Clear Lens (CL)	Internal Louver (LVR)	Satin / Silver ¹ (SA)	2400K (24K)	1.5 Watts: 190 Lumens / ft* ² (1.5W)	0-10V: 100% - 1% (10V)	Outdoor IP67 (IP67)	120V - 277V (UNV)	Specify Length in Feet & Inches Example: 7'8"	
	50% Semi-Frosted Lens (SF)		Black (BK)	2700K (27K)	2 Watts: 254 Lumens / ft* ² (2W)					Phase Dimming: Forward Phase / Reverse Phase (PH)
	100% Frosted Lens (F)	Leave Blank for No Louver		3000K (30K)	3 Watts: 381 Lumens / ft* ² (3W)					
	Asymmetric Lens (ASM)				3500K (35K)	4 Watts: 508 Lumens / ft* ² (4W)				
					4000K (40K)	5 Watts: 635 Lumens / ft* ² (5W)	Hi-Lume 1% 3 Wire* ³ (L3DA)			
					4500K (45K)	6 Watts: 762 Lumens / ft* ² (6W)	Hi-Lume Premier 0.1% JA8* ⁴ (L3D0)			
					5000K (50K)	8 Watts: 1016 Lumens / ft* ² (8W)				
	15° Optics (15D)			5700K (57K)	12 Watts: 1524 Lumens / ft* ² (12W)	DMX-512* ⁵ (DMX)				
	30° Optics (30D)			Red (R)		DALI* ⁶ (DALI)				
	45° Optics (45D)			Green (G)		JA8 0-10V (JA8-10V)				
60° Optics (60D)			Blue (B)		Leave Blank for Non-Dimming					
			Amber (A)							

Note: See page 2 for ordering notes & restrictions.



ORDERING NOTES & RESTRICTIONS

Note: Remote drivers sized based on wattage per length. **Example:** 10 feet x 8 Watts = 80 Watts. Driver will be sized based on 80 Watts.

- *¹ Default finish is Satin / Silver (**SA**) if left blank.
- *² Lumens per Foot based on 35K CCT LED with Clear Lens (**CL**). **Example:** 127 Lumens x 1.5 Watts = 190 Lumens per Foot.
- *³ (**L3DA**) 40 watt max Hi-Lume 1% L3DA3W #L3DA4U1UKL-CV240
- *⁴ (**L3D0**) 96 watt max Hi-Lume Premier 0.1% #L3D0-96W24V-U
- *⁵ Default DMX address of each fixture is 001. Consult third party DMX commissioner to modify at time of installation.
- *⁶ DALI commissioning to be performed by a third party at time of installation. ALUZ does not provide DALI commissioning.

LAMP FEATURES

Lamp Type	High Output LEDs (No Mercury)
CRI	> 95
Efficacy*	127 Lumens per Watt

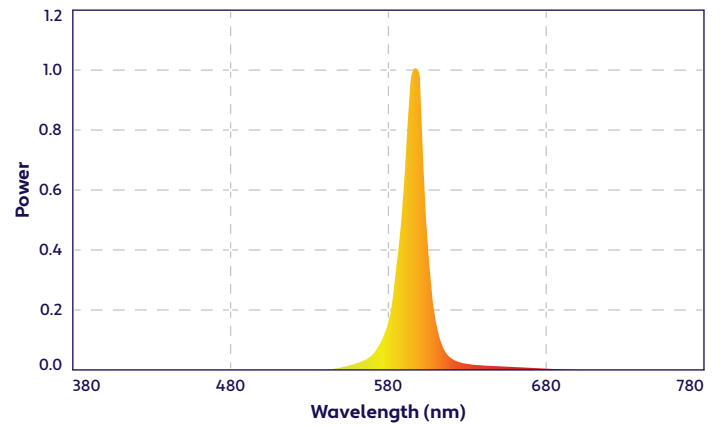
Note: Efficacy is based on 35K CCT LED (**35K**) with Clear Lens (**CL**).

LAMP SPECIFICATIONS

Lamp Number	Correlated Color Temperature / Description	Efficacy (Lumens per Watt)	L70 LED Life
24K	2400 Kelvin (Incandescent White)	127	60,000 hrs.
27K	2700 Kelvin (Warm White)	127	
30K	3000 Kelvin (Warm White)	127	
35K	3500 Kelvin (Neutral White)	127	
40K	4000 Kelvin (Neutral White)	127	
45K	4500 Kelvin (Neutral White)	127	
50K	5000 Kelvin (Cool White)	137	40,000 hrs.
57K	5700 Kelvin (Cool White)	137	
R	Red (621nm)	70	
G	Green (525nm)	139	
B	Blue (470nm)	40	
A	Amber (590nm)	128	

Note: The specifications Standard Output (**SO**), Mid Output (**MO**), and High Output (**HO**) have been replaced by a single output equivalent to High Output (**HO**).
To calculate Lumens per Foot, multiply Efficacy by Watts per Foot.
Example: 127 Lumens per Watt x 1.5 Watts per Foot = 190 Lumens per Foot.

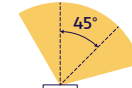
SPECTRAL POWER DISTRIBUTION AMBER LED (590nm) TURTLE FRIENDLY



BEAM ANGLES



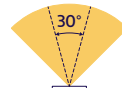
120° x 120° Beam
Clear Lens (**CL**)
50% Semi-Frosted Lens (**SF**)
100% Frosted Lens (**F**)



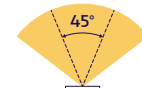
45° x 60° Beam
Asymmetric Lens
(**ASM**)



15° x 60° Beam
Optic Lens
(**15D**)



30° x 60° Beam
Optic Lens
(**30D**)



45° x 60° Beam
Optic Lens
(**45D**)

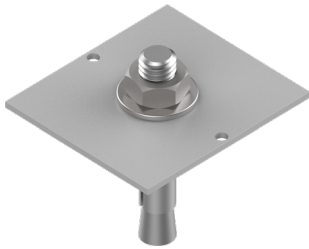


60° x 60° Beam
Optic Lens
(**60D**)

DRIVERS

Dimming Selection	Product Code	Link to Specification Sheet / URL
0-10V: 100% - 1%	(10V)	
Phase Dimming: Forward Phase / Reverse Phase	(PH)	
Hi-Lume 1% 3 Wire	(L3DA)	
Hi-Lume Premier 0.1% JA8	(L3D0)	
DMX-512	(DMX)	
DALI	(DALI)	
JA8 0-10V	(JA8-10V)	

MOUNTING ACCESSORIES (Sold Separately)



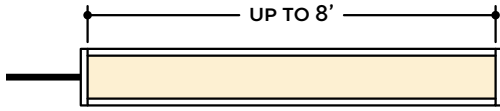
Mounting Plate
(A4-ZERA-PAT-MP)

Part #	Qty.
A4-ZERA-PAT-MP	

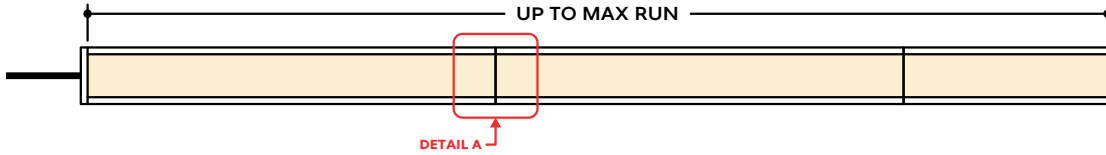
Note: Use 1 mounting plate per 3', rounded up.

DESIGN GUIDELINES

Individual Fixture



Continuous Run (Dry Location)



KEY

Detail A Continuous Connection: Fixture segments connect internally, leaving no gaps between segments. Refer to installation instructions for additional information.

Note: Drawings not to scale. Product may differ from examples shown.