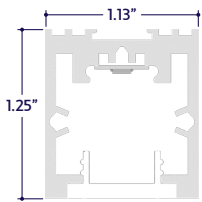


END VIEW / DIMENSIONS



MINIMUM & MAXIMUM RUNS

Wattage	1.5W	2W	3W	4W	5W	6W	8W	10W	12W
0-10V & DALI Minimum Run	4'	3'	2'	2'	2'	1'	1'	1'	1'
0-10V & DALI Maximum Run	39'	27'	19'	14'	11'	9'	7'	6'	5'
DMX Minimum Run	4'	3'	2'	2'	2'	1'	1'	1'	1'
DMX Maximum Run	26'	18'	13'	9'	8'	6'	4'	4'	3'

SPECIFY PRODUCT CODE | CHOOSE FROM DROP DOWNS

Series	Lens	Watts per Foot	Dimming	BIOS LED	Listing	Finish	Fixture Voltage ⁶	Fixture Length
							UNV	
A3-ZITO-PSQ-BIOS ZITO Pendant Square BIOS Illuminated (A3-ZITO-PSQ)	Clear Lens (CL)	1.5 Watts (1.5W) 234 Lumens / ft ^{*1}	0-10V (10V)	BIOS Biological Static: 3500K Daytime ^{*2} (BS-35K)	Indoor (DRY)	Natural Silver ^{*3} (NA)	120 - 277V Line Voltage (UNV)	Specify Length in Feet & Inches Example: 7'8"
	50% Semi-Frosted Lens (SF)	2 Watts (2W) 312 Lumens / ft ^{*1}				Polished (PA)		
	100% Frosted Lens: Line of Light (F)	3 Watts (3W) 468 Lumens / ft ^{*1}	DALI (DALI)	BIOS Biological Dynamic: 3500K Daytime - 3000K Evening ^{*3} (BD-35K-30K)	Outdoor (DAMP)	White (WH)		
		4 Watts (4W) 624 Lumens / ft ^{*1}				Satin / Silver (SA)		
	Asymmetric Lens (ASM)	5 Watts (5W) 780 Lumens / ft ^{*1}	DMX-512 (DMX)	BIOS Biological Tunable: 3500K Daytime - 2700K Evening ^{*4} (BT-35K-27K)		Black (BK)		
	6 Watts (6W) 936 Lumens / ft ^{*1}	15° Optics (15D)				10 Watts (10W) 1560 Lumens / ft ^{*1}		
	8 Watts (8W) 1248 Lumens / ft ^{*1}	30° Optics (30D)	12 Watts (12W) 1872 Lumens / ft ^{*1}					
	45° Optics (45D)							
60° Optics (60D)								

^{*1} Lumens per Foot based on 35K CCT LED. Example: 156 Lumens x 4 Watts = 624 Initial Lumens per Foot.

^{*2} BIOS Biological Static available in standard 3500K Daytime CCT. Consult factory for other color temperature options.

^{*3} BIOS Biological Dynamic available in standard 3500K Daytime - 3000K Evening CCT gamut. Consult factory for other color temperature options.

^{*4} BIOS Biological Tunable available in standard 3500K Daytime - 2700K Evening CCT gamut. Consult factory for other color temperature options.

^{*5} Standard Finish is Natural Silver (NA) if left blank.

^{*6} Remote drivers wattage sized based on length of run. Example: 6' run x 10 watts per foot = 60 watts. Driver will be sized to 60 watts maximum.



LAMP FEATURES

Lamp Type	BIOS SkyBlue™ LEDs
CRI	> 80
Efficacy*	156 Lumens per Watt

Note: Efficacy is based on Biological Static (BIOS-BS-35K) with Clear Lens (CL).

LAMP SPECIFICATIONS

Lamp Number	Description	Efficacy (Lumens per Watt)	L70 LED Life
BIOS-BS-35K	Biological Static: 3500K Daytime	156	
BIOS-BD-35K-30K	Biological Dynamic: 3500K Daytime - 3000K Evening	156	60,000 hrs.
BIOS-BT-35K-27K	Biological Tunable: 3500K Daytime - 2700K Evening	156	

Note: Efficacy is based on 35K CCT LED with Clear Lens (CL).

Note: To calculate Lumens per Foot, multiply Efficacy by Watts per Foot.

Example: 156 Lumens per Watt x 4 Watts per Foot = 624 Lumens per Foot.

LENS / OPTICS APPEARANCE



Clear Lens (CL)
Visible Diode Image
0% Loss Factor



50% Semi-Frosted Lens (SF)
Slight Diode Image
12.5% Loss Factor



100% Frosted Lens (F)
No Diode Image: Line of Light
25% Loss Factor

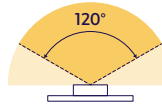


Asymmetric Lens (ASM)
Slight Diode Image
18% Loss Factor

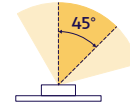


Optic Lens (15D, 30D, 45D, 60D)
Slight Diode Image
18% Loss Factor

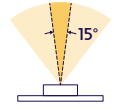
BEAM ANGLES



120° x 120° Beam
Clear Lens (CL)
50% Semi-Frosted Lens (SF)
100% Frosted Lens (F)



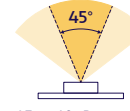
45° x 60° Beam
Asymmetric Lens (ASM)



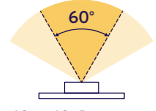
15° x 60° Beam
Optic Lens (15D)



30° x 60° Beam
Optic Lens (30D)

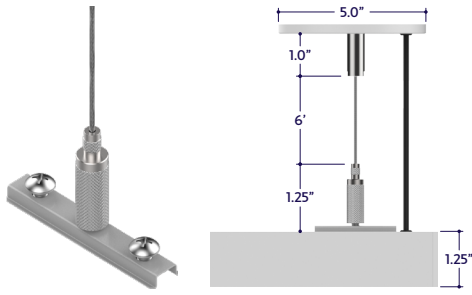


45° x 60° Beam
Optic Lens (45D)



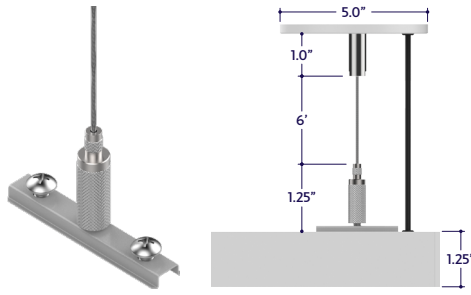
60° x 60° Beam
Optic Lens (60D)

POWER CONNECTORS (Sold Separately)



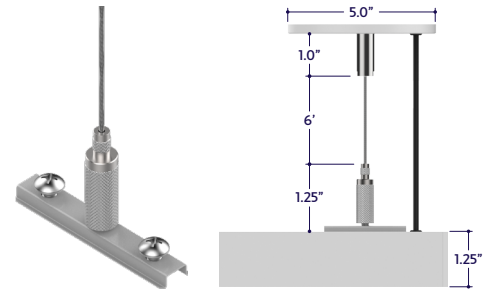
Part #	Qty.
A3-ZITO-PSQ-BIOS-AC-PC-B5-BK-6'	
A3-ZITO-PSQ-BIOS-AC-PC-B5-WH-6'	

Note: Use 1 Pendant Mount Assembly w/ Power Connector per fixture, in locations that require a power lead.
Default Power Connector Finish is Black (BK) if unspecified.
Click on image to see cut sheet for details.



Part #	Qty.
A3-ZITO-PSQ-BIOS-AC-PC-BD-BK-6'	
A3-ZITO-PSQ-BIOS-AC-PC-BD-WH-6'	

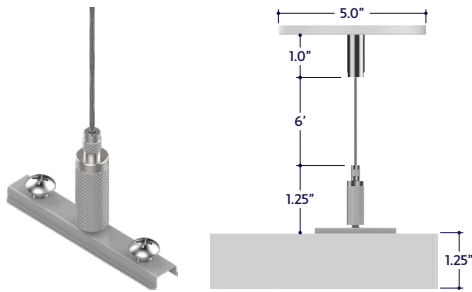
Note: Use 1 Pendant Mount Assembly w/ Power Connector per fixture, in locations that require a power lead.
Default Power Connector Finish is Black (BK) if unspecified.
Click on image to see cut sheet for details.



Part #	Qty.
A3-ZITO-PSQ-BIOS-AC-PC-BT-BK-6'	
A3-ZITO-PSQ-BIOS-AC-PC-BT-WH-6'	

Note: Use 1 Pendant Mount Assembly w/ Power Connector per fixture, in locations that require a power lead.
Default Power Connector Finish is Black (BK) if unspecified.
Click on image to see cut sheet for details.

MOUNTING ACCESSORIES (Sold Separately)



Part #	Qty.
A3-ZITO-PSQ-AC-6'	

Note: Use 2 Aircraft Cable Assemblies per fixture segment, in locations that do not require a power lead. Click on image to see cut sheet for details.



Pendant Mount Canopy
(A3-ZITO-CN-X) X = Specify Finish, White (WH) or Black (BK)
Default finish is White (WH) if left blank.

Part #	Qty.
A3-ZITO-CN-WH	
A3-ZITO-CN-BK	

Note: Use 1 canopy with each Aircraft Cable Assembly.

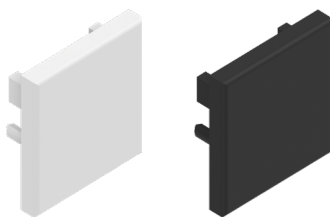


180° Lock Bar
(A3-ZITO-LB-180D)

Part #	Qty.
A3-ZITO-LB-180D	

Note: Use 1 lock bar for each connection between fixture segments.

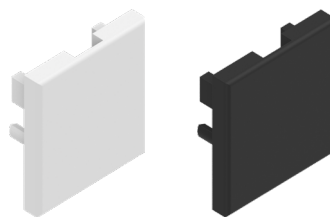
END CAPS (Sold Separately)



End Cap
(A3-ZITO-PSQ-EC-X)
X = Specify Finish: White (WH) or Black (BK)

Part #	Qty.
A3-ZITO-PSQ-EC-WH	
A3-ZITO-PSQ-EC-BK	

Note: Default Finish is Black (BK) if unspecified.



End Cap with Exit Hole
(A3-ZITO-PSQ-EC-H-X)
X = Specify Finish: White (WH) or Black (BK)

Part #	Qty.
A3-ZITO-PSQ-EC-H-WH	
A3-ZITO-PSQ-EC-H-BK	

Note: Default Finish is Black (BK) if unspecified.

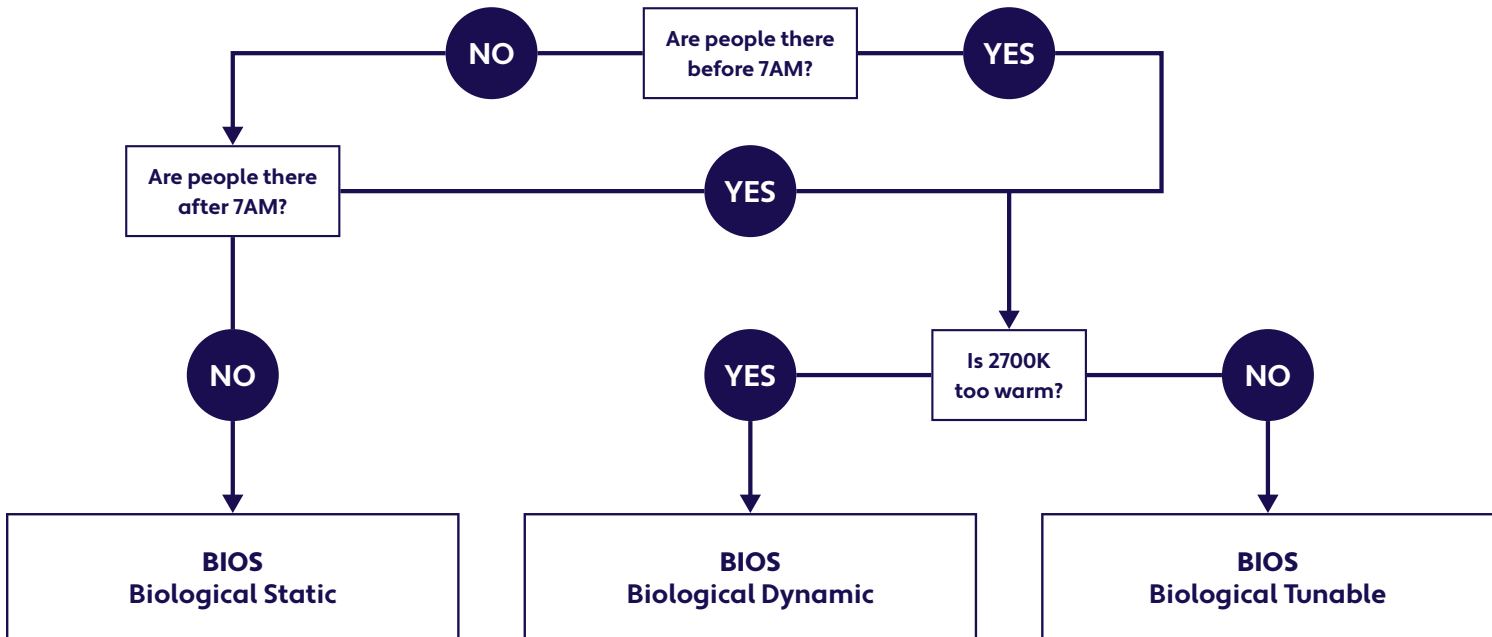
DELIVERED MELANOPIC RATIOS

BIOS Solution / Nominal CCT / Product Code	Spectral Mode	CRI	R9	Daytime Spectrum Melanopic Ratio* (M/P)	
				m-EER	m-DER
BIOS Biological Static: 3500K Daytime (BIOS-BS-35K)	Daytime Solution	80+	> 90	≥ 0.80	≥ 0.72
BIOS Biological Dynamic: 3500K Daytime - 3000K Evening (BIOS-BD-35K-30K)	Daytime + Evening Solution	80+	> 90	≥ 0.70	≥ 0.63
BIOS Biological Tunable: 3500K Daytime - 2700K Evening (BIOS-BT-35K-27K)	Daytime + Evening Solution	80+	> 90	≥ 0.80	≥ 0.72

*Melanopic ratios are provided in two forms: (m-EER) which is calculated using the WELL v2 methodology and the corresponding CIE melanopic Daylight Equivalent Ratio, (m-DER).

CHOOSING YOUR BIOS SOLUTION

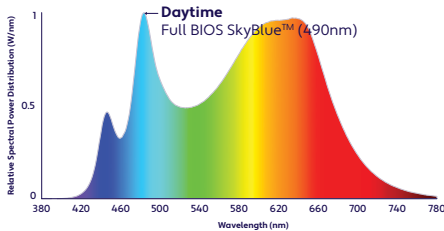
ALUZ offers four different BIOS Circadian LED Solutions – Biological Static, Biological Dynamic, and Biological Tunable White. Use the decision tree below to identify when and where to use BIOS Wellness LED Lighting Solutions .



No CCT Change when Dimmed

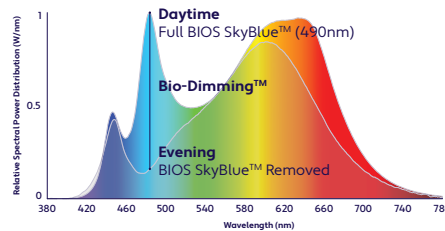
500K Shift when Dimmed^B

Dims to 2700K



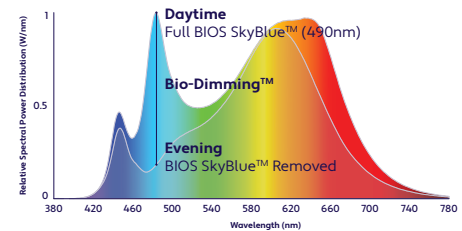
Daytime Solution
(Offices, Medical / Dental Offices)

Spaces in operation during daytime hours, between 7AM and 7PM.



Daytime + Evening Solution
(Hospitals)

Spaces in operation overnight, after 7PM and before 7AM. CCT color shift in the evening not preferred.
(^B3000K dims to 2700K)

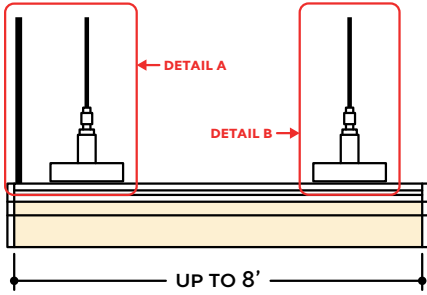


Daytime + Evening Solution
(Offices, Shiftwork)

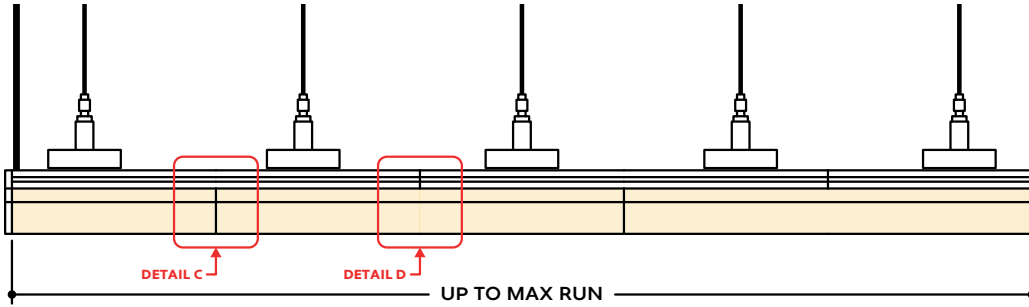
Spaces in operation overnight, after 7PM and before 7AM and people do not sleep there. CCT color shift in the evening not preferred.

DESIGN GUIDELINES

Individual Fixture



Continuous Run (Dry or Wet Location)



KEY

- Detail A Power Feed:** Power is fed through the back of the fixture, through the end cap.
- Detail B Suspension:** Pendant mount luminaires use an aircraft cable suspension system.
- Detail C Two Lenses Meet:** Lenses are staggered so that the lens always overlaps where two extrusion segments meet. Refer to installation instructions for additional details.
- Detail D Two Extrusions Meet:** Two extrusion segments meet, held together by a lock bar. Refer to installation instructions for additional details.

Note: Drawings not to scale. Product may differ from examples shown.