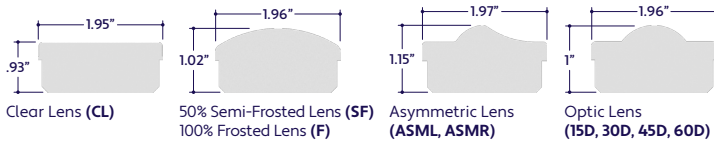


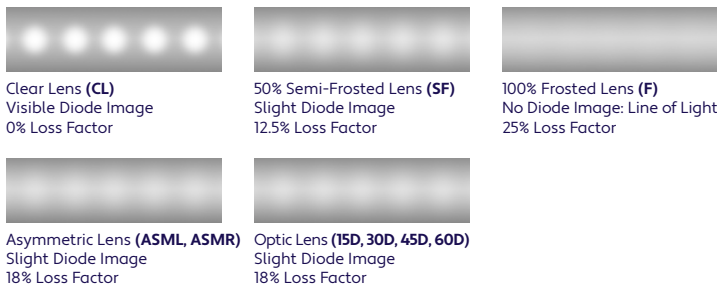
GENERAL FEATURES

Applications	MRI Rooms (Non-Ferrous Metal)
Lens	Clear, 50% Semi-Frosted, or 100% Frosted
Optics & Asymmetric	15°, 30°, 45°, 60°, 120°, or Asymmetric Optics
Length	Built to Order (+/- 1/8" Tolerance)
Construction	Aluminum Extrusion
Weight	0.61 lbs per foot
Mounting	Mounting Clips (Sold Separately)
Listing	Dry or Damp Location UL1598, CSA C22.2#250.0 UL8750, CSA250 UL2108, 67.1.9, 60.4, CSA C22.2 #9
Driver	Remote
Closet Rating	Up to 3.6 Watts per Foot Maximum
Temperature Ratings	Operating / Startup: -20° to 48°C (-4° to 120°F) Storage: -40° to 76°C (-40° to 170°F)
Installation Link	

END VIEWS / DIMENSIONS



LENS / OPTICS APPEARANCE



ELECTRICAL

Dimming	0-10V, Forward / Reverse Phase, Lutron, DMX, DALI
Maximum Run (Class 2 Applications)	36' (1.5W, 2W), 28' (3W), 21' (4W), 17' (5W), 14' (6W), 10' (8W), 7' (12W)
Luminaire Voltage	24VDC

SPECIFY PRODUCT CODE | CHOOSE FROM DROP DOWNS

Series	Lens / Optics	Finish	CCT LED	Watts per Foot	Dimming	Listing	Luminaire Voltage	Luminaire Length
							24V-UNV	
ZUCO Standard Wide Non-Ferrous Metal (A1-ZUCO-STW-NFM)	Clear Lens (CL)	Natural Silver* ² (NA)	2400K (24K)	1.5 Watts: 190 Lumens / ft* ³ (1.5W)	0-10V: 100% - 1% (10V)	Indoor (DRY)	24V-UNV Remote Driver (24V-UNV)	Specify Length in Feet & Inches Example: 7'8"
	50% Semi-Frosted Lens (SF)	Silver (SR)	2700K (27K)	2 Watts: 254 Lumens / ft* ³ (2W)	Phase Dimming: Forward Phase / Reverse Phase (PH)			
	100% Frosted Lens (F)	White (WH)	3000K (30K)	3 Watts: 381 Lumens / ft* ³ (3W)	Hi-Lume 1% 3 Wire* ⁶ (L3DA)	Outdoor (DAMP)		
	Asymmetric Lens Left (ASML)	Satin (SA)	3500K (35K)	4 Watts: 508 Lumens / ft* ³ (4W)	Hi-Lume Premier 0.1% JA8* ⁵ (L3D0)			
	Asymmetric Lens Right* ⁴ (ASMR)	Black (BK)	4000K (40K)	5 Watts: 635 Lumens / ft* ³ (5W)	DMX-512* ⁶ (DMX)			
	15° Optics (15D)		4500K (45K)	6 Watts: 762 Lumens / ft* ³ (6W)	DALI* ⁷ (DALI)			
	30° Optics (30D)		5000K (50K)	8 Watts: 1016 Lumens / ft* ³ (8W)	JA8 0-10V (JA8-10V)			
	45° Optics (45D)		5700K (57K)	12 Watts: 1524 Lumens / ft* ³ (12W)	Leave Blank for Non-Dimming			
	60° Optics (60D)		Red (R)					

Note: See page 2 for ordering notes & restrictions.

ORDERING NOTES & RESTRICTIONS

Note: Remote drivers sized based on wattage per length. **Example:** 10 feet x 8 Watts = 80 Watts. Driver will be sized based on 80 Watts.

- *1 Default Asymmetric Direction is Right (**ASMR**) if unspecified.
- *2 Default finish is Natural Silver (**NA**) if left blank.
- *3 Lumens per Foot based on 35K CCT LED with Clear Lens (**CL**). **Example:** 127 Lumens x 1.5 Watts = 190 Lumens per Foot.
- *4 (**L3DA**) 40 watt max Hi-Lume 1% L3DA3W #L3DA4U1UKL-CV240
- *5 (**L3D0**) 96 watt max Hi-Lume Premier 0.1% #L3D0-96W24V-U
- *6 Default DMX address of each luminaire is 001. Consult third party DMX commissioner to modify at time of installation.
- *7 DALI commissioning to be performed by a third party at time of installation. ALUZ does not provide DALI commissioning.

LAMP SPECIFICATIONS

Lamp Number	Correlated Color Temperature / Description	Efficacy (Lumens per Watt)	L70 LED Life
24K	2400 Kelvin (Incandescent White)	127	60,000 hrs.
27K	2700 Kelvin (Warm White)	127	
30K	3000 Kelvin (Warm White)	127	
35K	3500 Kelvin (Neutral White)	127	
40K	4000 Kelvin (Neutral White)	127	
45K	4500 Kelvin (Neutral White)	127	40,000 hrs.
50K	5000 Kelvin (Cool White)	137	
57K	5700 Kelvin (Cool White)	137	
R	Red (621nm)	70	
G	Green (525nm)	139	
B	Blue (470nm)	40	
A	Amber (590nm)	128	

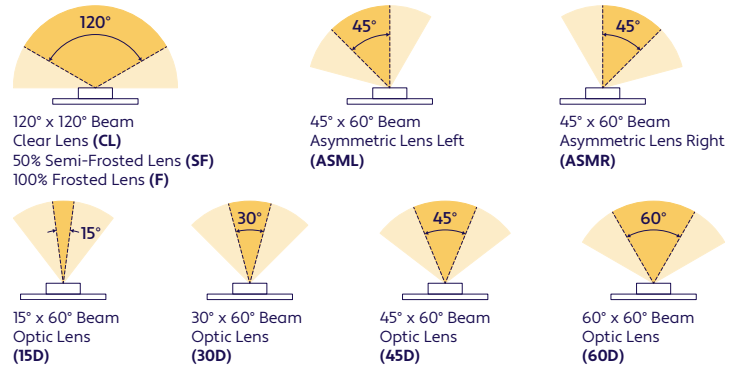
Note: The specifications Standard Output (**SO**), Mid Output (**MO**), and High Output (**HO**) have been replaced by a single output equivalent to High Output (**HO**).
 To calculate Lumens per Foot, multiply Efficacy by Watts per Foot.
Example: 127 Lumens per Watt x 1.5 Watts per Foot = 190 Lumens per Foot.

LAMP FEATURES

Lamp Type	High Output LEDs (No Mercury)
CRI	> 95
Efficacy*	127 Lumens per Watt

Note: Efficacy is based on 35K CCT LED (**35K**) with Clear Lens (**CL**).

BEAM ANGLES



OPTICS ORIENTATION

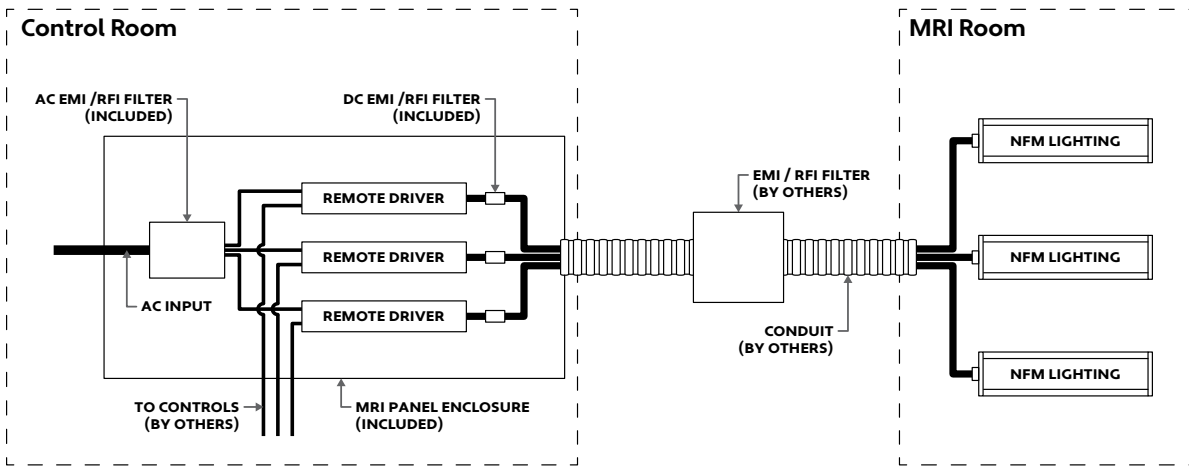


Note: Refer to the above diagrams to understand optics orientation in relation to the power feed.

MRI POWER PANEL DRIVERS (Sold Separately)

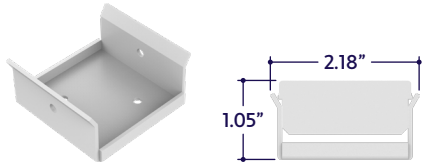
Series / Wattage	Primary Voltage	Secondary Voltage		Dimming	Listing
		UNV	24VDC		
30 Watt Load (MPD30-E)	Universal Voltage: 120-277VAC (UNV)	24 Volts DC (24VDC)		0-10V: 100% - 1% (10V) Phase Dimming: Forward Phase / Reverse Phase (PH)	Indoor (DRY)
60 Watt Load (MPD60-E)					
96 Watt Load (MPD96-E)					
288 Watt Load (MPD288-E)					
				Hi-Lume 1% 3 Wire (L3DA)	
				Hi-Lume Premier 0.1% JA8 (L3D0)	
				DMX-512 (DMX)	
				DALI (DALI)	
				JA8 0-10V (JA8-10V)	

TYPICAL LAYOUT OF MRI ROOM WITH POWER PANEL



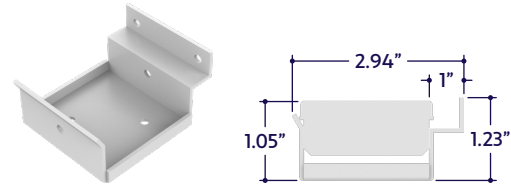
MOUNTING OPTIONS (Sold Separately)

Note: Mounting clips are only available in Natural Silver Finish, unless otherwise specified.



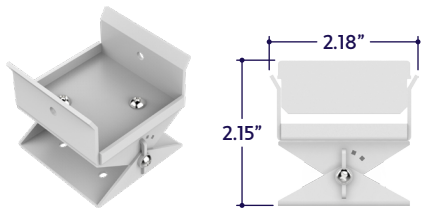
Part #	Qty.
A1-ZUCO-STW-NFM-MC-1	

Note: Use 1 mounting clip per 2', rounded up.
 Click on image to see cut sheet for additional details.



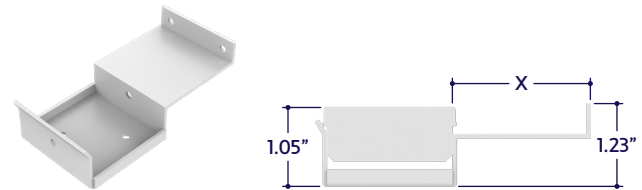
Part #	Qty.
A1-ZUCO-STW-NFM-MC-2	

Note: Use 1 mounting clip per 2', rounded up.
 Click on image to see cut sheet for additional details.



Part #	Qty.
A1-ZUCO-STW-NFM-MC-3	

Note: Use 1 mounting clip per 2', rounded up.
 Click on image to see cut sheet for additional details.

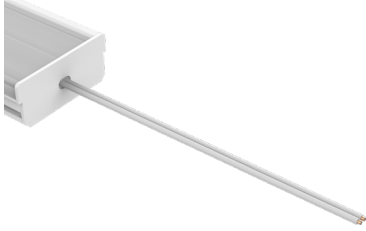


Part #	Length	Qty.
A1-ZUCO-STW-NFM-MC-4		

Note: Use 1 mounting clip per 2', rounded up.
 Click on image to see cut sheet for additional details.

DRY CONNECTORS (Sold Separately)

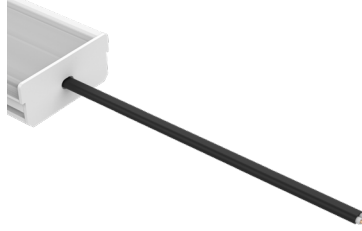
Note: Connectors are factory assembled to each run length.



Dry Power Connector
(A1-ZUCO-STW-NFM-PC-DRY-X)
X = Specify Length, 36" Default, 25' Maximum

Part #	Length	Qty.
A1-ZUCO-STW-NFM-PC-DRY-	36"	
A1-ZUCO-STW-NFM-PC-DRY-		

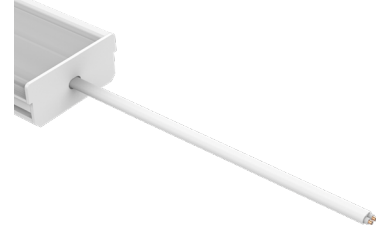
Note: Specify 1 Power Connector for each lead required. Power Connectors are factory assembled to each length.



Dry Power Connector with Black Jacket
(A1-ZUCO-STW-NFM-PC-DRY-BK-X)
X = Specify Length, 36" Default, 25' Maximum

Part #	Length	Qty.
A1-ZUCO-STW-NFM-PC-DRY-BK-	36"	
A1-ZUCO-STW-NFM-PC-DRY-BK-		

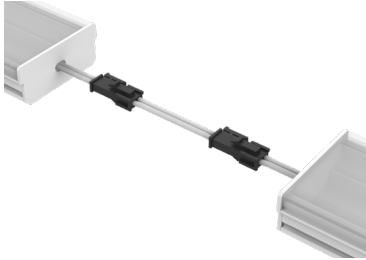
Note: Specify 1 Power Connector for each lead required. Power Connectors are factory assembled to each length.



Dry Power Connector with White Jacket
(A1-ZUCO-STW-NFM-PC-DRY-WH-X)
X = Specify Length, 36" Default, 25' Maximum

Part #	Length	Qty.
A1-ZUCO-STW-NFM-PC-DRY-WH-	36"	
A1-ZUCO-STW-NFM-PC-DRY-WH-		

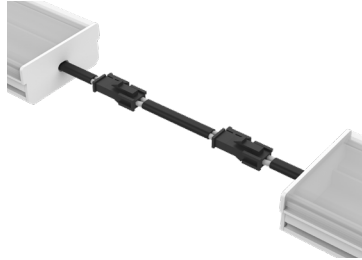
Note: Specify 1 Power Connector for each lead required. Power Connectors are factory assembled to each length.



Dry Continuous Connector
(A1-ZUCO-STW-NFM-CC-DRY-X)
X = Specify Length, 3" Default

Part #	Length	Qty.
A1-ZUCO-STW-NFM-CC-DRY-	3"	
A1-ZUCO-STW-NFM-CC-DRY-		

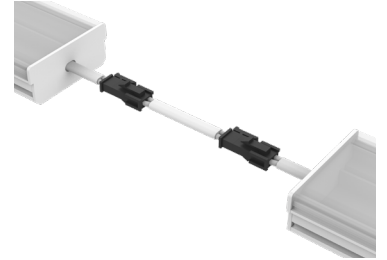
Note: Specify Continuous Connectors to traverse a gap or obstacle. Continuous Connectors are factory assembled to specified lengths.



Dry Continuous Connector with Black Jacket
(A1-ZUCO-STW-NFM-CC-DRY-BK-X)
X = Specify Length, 3" Default

Part #	Length	Qty.
A1-ZUCO-STW-NFM-CC-DRY-BK-	3"	
A1-ZUCO-STW-NFM-CC-DRY-BK-		

Note: Specify Continuous Connectors to traverse a gap or obstacle. Continuous Connectors are factory assembled to specified lengths.



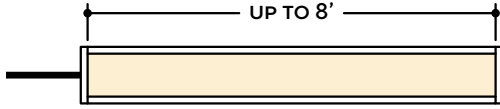
Dry Continuous Connector with White Jacket
(A1-ZUCO-STW-NFM-CC-DRY-WH-X)
X = Specify Length, 3" Default

Part #	Length	Qty.
A1-ZUCO-STW-NFM-CC-DRY-WH-	3"	
A1-ZUCO-STW-NFM-CC-DRY-WH-		

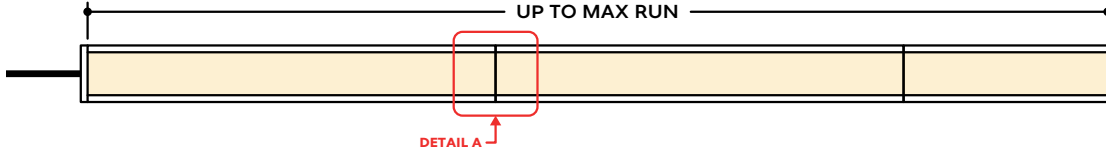
Note: Specify Continuous Connectors to traverse a gap or obstacle. Continuous Connectors are factory assembled to specified lengths.

DESIGN GUIDELINES

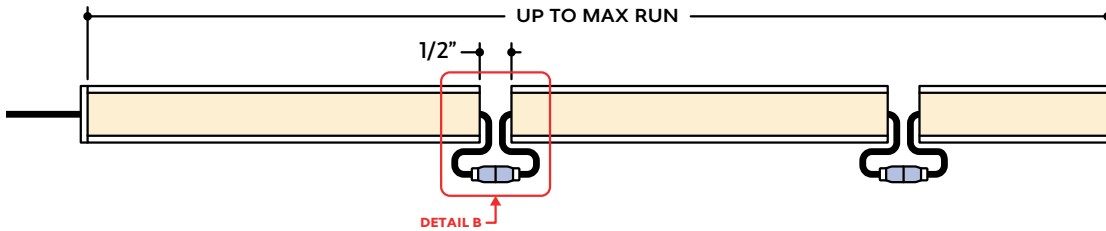
Individual Fixture



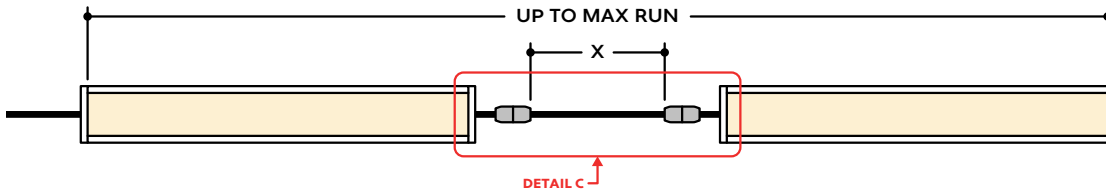
Continuous Run (Dry Location)



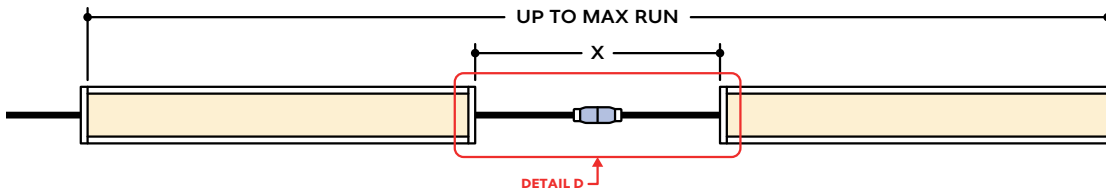
Continuous Run (Wet Location)



Runs with Continuous Connector (Dry Location)



Runs with Continuous Connector (Wet Location)

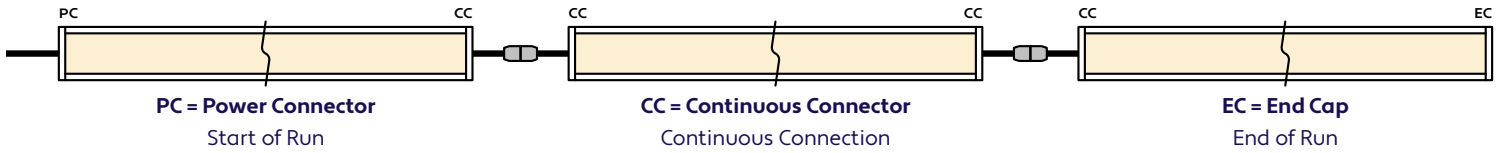


KEY

- Detail A** **Continuous Connection (Dry Location):** Luminaire segments connect using pins, leaving no gaps between segments, with a mounting clip holding the two segments together. Refer to installation instructions for additional information.
- Detail B** **Continuous Connection (Wet Location):** Luminaire segments are connected using a provided splice connector, with a 1/2" gap between segments.
- Detail C** **Dry Continuous Connector:** Used to span a corner or traverse a gap, corner, or obstacle in a dry location installation area.
- Detail D** **Wet Continuous Connector:** Used to span a corner or traverse a gap, corner, or obstacle in a wet location installation area.

Note: Drawings not to scale. Product may differ from examples shown.

CONNECTION SEQUENCE

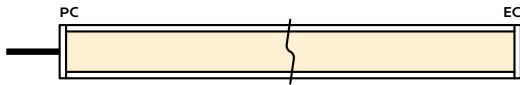


- Specifying a layout is not required to place an order.
- Configuration code applies to full length ordered and will be built per the Continuous Run models on Design Guidelines.
- Connector type subject to change based on availability and listing. Refer to Design Guidelines for details.

HOW TO SPECIFY CONFIGURATIONS

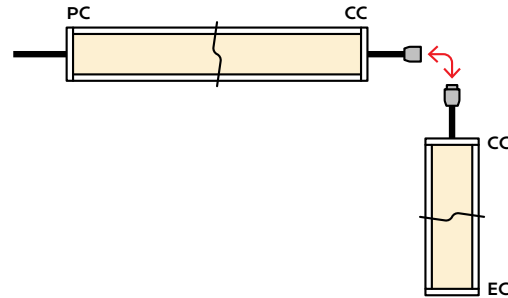
Example: 20' Straight Run

- 1x A1-ZUCO-STW-NFM-CL-NA-35K-3W-10V-DRY-24V-UNV-20'-PC-EC



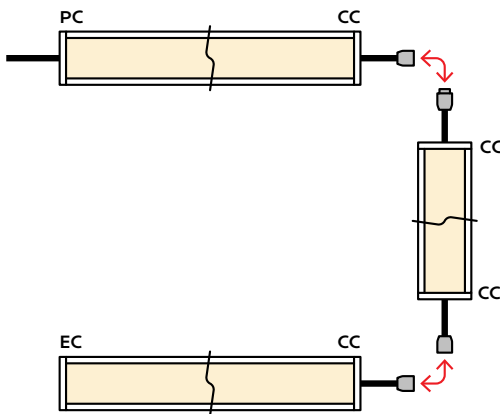
Example: 25' L-Shaped Run

- 1x A1-ZUCO-STW-NFM-CL-NA-35K-3W-10V-DRY-24V-UNV-12'-PC-CC
- 1x A1-ZUCO-STW-NFM-CL-NA-35K-3W-10V-DRY-24V-UNV-13'-CC-EC



Example: 30' U-Shaped Run

- 1x A1-ZUCO-STW-NFM-CL-NA-35K-3W-10V-DRY-24V-UNV-6'-PC-CC
- 1x A1-ZUCO-STW-NFM-CL-NA-35K-3W-10V-DRY-24V-UNV-18'-CC-CC
- 1x A1-ZUCO-STW-NFM-CL-NA-35K-3W-10V-DRY-24V-UNV-6'-CC-EC



Example: 28' Rectangle Shaped Run

- 1x A1-ZUCO-STW-NFM-CL-NA-35K-3W-10V-DRY-24V-UNV-11'-PC-CC
- 1x A1-ZUCO-STW-NFM-CL-NA-35K-3W-10V-DRY-24V-UNV-3'-CC-CC
- 1x A1-ZUCO-STW-NFM-CL-NA-35K-3W-10V-DRY-24V-UNV-11'-CC-CC
- 1x A1-ZUCO-STW-NFM-CL-NA-35K-3W-10V-DRY-24V-UNV-3'-CC-EC

