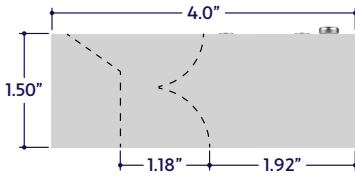


### GENERAL FEATURES

<b>Applications</b>	Accent, Cove, Perimeter Lighting
<b>Lens</b>	100% Frosted: No Pixelation (Line of Light)
<b>Viewing Angle</b>	120°
<b>Length</b>	Built to Order (+/- 1.8" Tolerance) See <b>Length Restrictions</b> Table for details
<b>Construction</b>	Aluminum Extrusion
<b>Weight</b>	0.38 lbs per foot
<b>Mounting</b>	Mounting Brackets (Sold Separately)
<b>Listing</b>	Dry or Damp Location UL1598, CSA C22.2#250.0 UL8750, CSA250 UL2108, 67.1.9, 60.4, CSA C22.2 #9
<b>Driver</b>	Remote (Sold Separately)
<b>Temperature Ratings</b>	Operating / Startup: -20° to 48°C (-4° to 120°F) Storage: -40° to 76°C (-40° to 170°F)
<b>Installation Link</b>	

### END VIEW / DIMENSIONS



### ELECTRICAL

<b>Dimming</b>	0-10V, DMX, DALI
<b>Maximum Run</b> (Line Voltage Integral Driver)	100' (1.5W, 2W, 3W), 80' (4W), 64' (5W), 53' (6W), 40' (8W), 26' (12W)
<b>Luminaire Voltage</b>	120V - 277V (UNV)

### SPECIFY PRODUCT CODE | CHOOSE FROM DROP DOWNS

Series	Lens / Optics	Finish	BIOS LED	Watts per Foot	Dimming	Listing	Luminaire Voltage <sup>6</sup>	Luminaire Length
<b>A1-ZUCO-IND-BIOS</b>	<b>F</b>						<b>UNV</b>	
ZUCO Indirect BIOS Illuminated (A1-ZUCO-IND-BIOS)	100% Frosted Lens (F)	Natural Silver <sup>1</sup> (NA)	BIOS Biological Static: 3500K Daytime <sup>2</sup> (BS-35K)	1.5 Watts (1.5W) 234 Lumens / ft <sup>2</sup> 2 Watts (2W) 312 Lumens / ft <sup>2</sup> 3 Watts (3W) 468 Lumens / ft <sup>2</sup>	0-10V (10V)	Indoor (DRY)	120 - 277V Line Voltage (UNV)	Specify Length in Feet & Inches <b>Example:</b> 7'8"
		Silver (SR)	BIOS Biological Dynamic: 3500K Daytime - 3000K Evening <sup>3</sup> (BD-35K-30K)	4 Watts (4W) 624 Lumens / ft <sup>2</sup>	DALI (DALI)	Outdoor (DAMP)		
		White (WH)		5 Watts (5W) 780 Lumens / ft <sup>2</sup>	DMX-512 (DMX)			
		Satin (SA)		6 Watts (6W) 936 Lumens / ft <sup>2</sup>				
		Black (BK)	BIOS Biological Tunable: 3500K Daytime - 2700K Evening <sup>4</sup> (BT-35K-27K)	8 Watts (8W) 1248 Lumens / ft <sup>2</sup>				
				10 Watts (10W) 1560 Lumens / ft <sup>2</sup> 12 Watts (12W) 1872 Lumens / ft <sup>2</sup>				

<sup>1</sup> Default finish is Natural Silver (NA) if left blank.

<sup>2</sup> BIOS Biological Static available in standard 3500K Daytime CCT. Consult factory for other color temperature options.

<sup>3</sup> BIOS Biological Dynamic available in standard 3500K Daytime - 3000K Evening CCT gamut. Consult factory for other color temperature options.

<sup>4</sup> BIOS Biological Tunable available in standard 3500K Daytime - 2700K Evening CCT gamut. Consult factory for other color temperature options.

<sup>5</sup> Lumens per Foot based on 35K CCT LED. **Example:** 156 Lumens x 4 Watts = 624 Initial Lumens per Foot.

<sup>6</sup> Remote drivers wattage sized based on length of run. **Example:** 6' run x 10 watts per foot = 60 watts. Driver will be sized to 60 watts maximum.



### LAMP FEATURES

Lamp Type	BIOS SkyBlue™ LEDs
CRI	> 80
Efficacy*	156 Lumens per Watt

Note: Efficacy is based on Biological Static (BIOS-BS-35K) with Clear Lens (CL).

### LAMP SPECIFICATIONS

Lamp Number	Description	Efficacy (Lumens per Watt)	L70 LED Life
BIOS-BS-35K	Biological Static: 3500K Daytime	156	
BIOS-BD-35K-30K	Biological Dynamic: 3500K Daytime - 3000K Evening	156	60,000 hrs.
BIOS-BT-35K-27K	Biological Tunable: 3500K Daytime - 2700K Evening	156	

Note: Efficacy is based on 35K CCT LED with Clear Lens (CL).

Note: To calculate Lumens per Foot, multiply Efficacy by Watts per Foot.

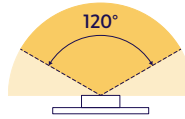
Example: 156 Lumens per Watt x 4 Watts per Foot = 624 Lumens per Foot.

### LENS / OPTICS APPEARANCE



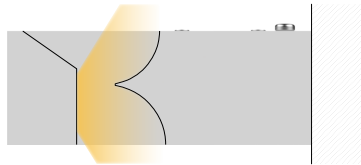
100% Frosted Lens (F)  
No Diode Image: Line of Light  
25% Light Loss

### BEAM ANGLE



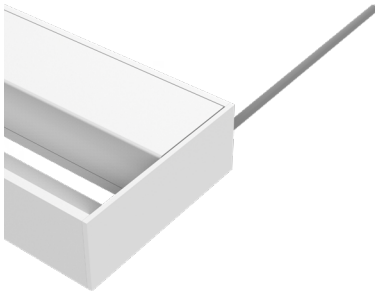
120° x 120° Beam

### MOUNTING OPTION



Surface

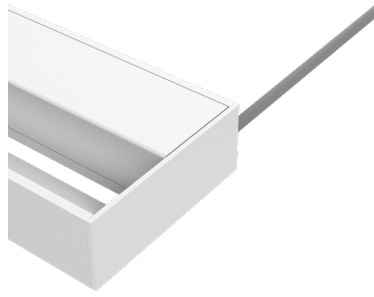
### CONNECTORS (Sold Separately)



Dry Power Connector  
(Biological Static LEDs Only)  
(20/2 Gauge Wire)  
**(A1-ZUCO-IND-BIOS-PC-PLM-BS-DRY-X)**  
X = Specify Length, 36" Default, 25' Maximum

Part #	Length	Qty.
A1-ZUCO-IND-BIOS-PC-PLM-BS-DRY-	36"	
A1-ZUCO-IND-BIOS-PC-PLM-BS-DRY-		

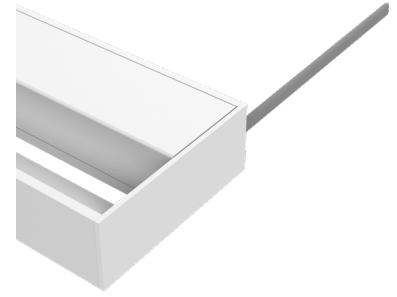
**Note:** Specify 1 Power Connector for each lead required.  
Power Connectors are factory assembled to each length.



Dry Power Connector  
(Biological Dynamic LEDs Only)  
(20/3 Gauge Wire)  
**(A1-ZUCO-IND-BIOS-PC-PLM-BD-DRY-X)**  
X = Specify Length, 36" Default, 25' Maximum

Part #	Length	Qty.
A1-ZUCO-IND-BIOS-PC-PLM-BD-DRY-	36"	
A1-ZUCO-IND-BIOS-PC-PLM-BD-DRY-		

**Note:** Specify 1 Power Connector for each lead required.  
Power Connectors are factory assembled to each length.

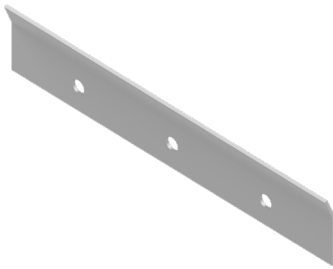


Dry Power Connector  
(Biological Tunable LEDs Only)  
(20/3 Gauge Wire)  
**(A1-ZUCO-IND-BIOS-PC-PLM-BT-DRY-X)**  
X = Specify Length, 36" Default, 25' Maximum

Part #	Length	Qty.
V	36"	
A1-ZUCO-IND-BIOS-PC-PLM-BT-DRY-		

**Note:** Specify 1 Power Connector for each lead required.  
Power Connectors are factory assembled to each length.

### MOUNTING ACCESSORIES (Sold Separately)

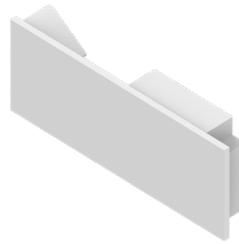


Mounting Bracket  
**(A1-ZUCO-IND-MB)**

Part #	Qty.
A1-ZUCO-IND-MB	

**Note:** Use 1 Mounting Bracket per 2'.  
Refer to installation instructions for details.

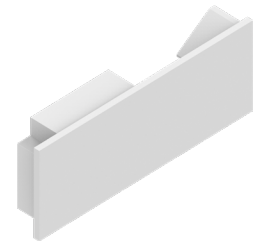
### END CAPS (Sold Separately)



Left End Cap  
**(A1-ZUCO-IND-ECL)**

Part #	Qty.
A1-ZUCO-IND-ECL	

**Note:** Use 1 Left End Cap for each terminus on the left side.



Right End Cap  
**(A1-ZUCO-IND-ECR)**

Part #	Qty.
A1-ZUCO-IND-ECR	

**Note:** Use 1 Right End Cap for each terminus on the right side.

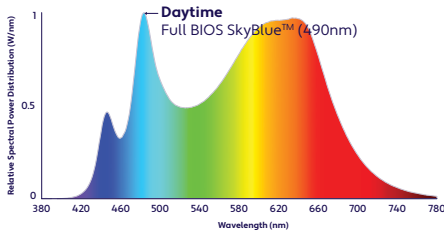
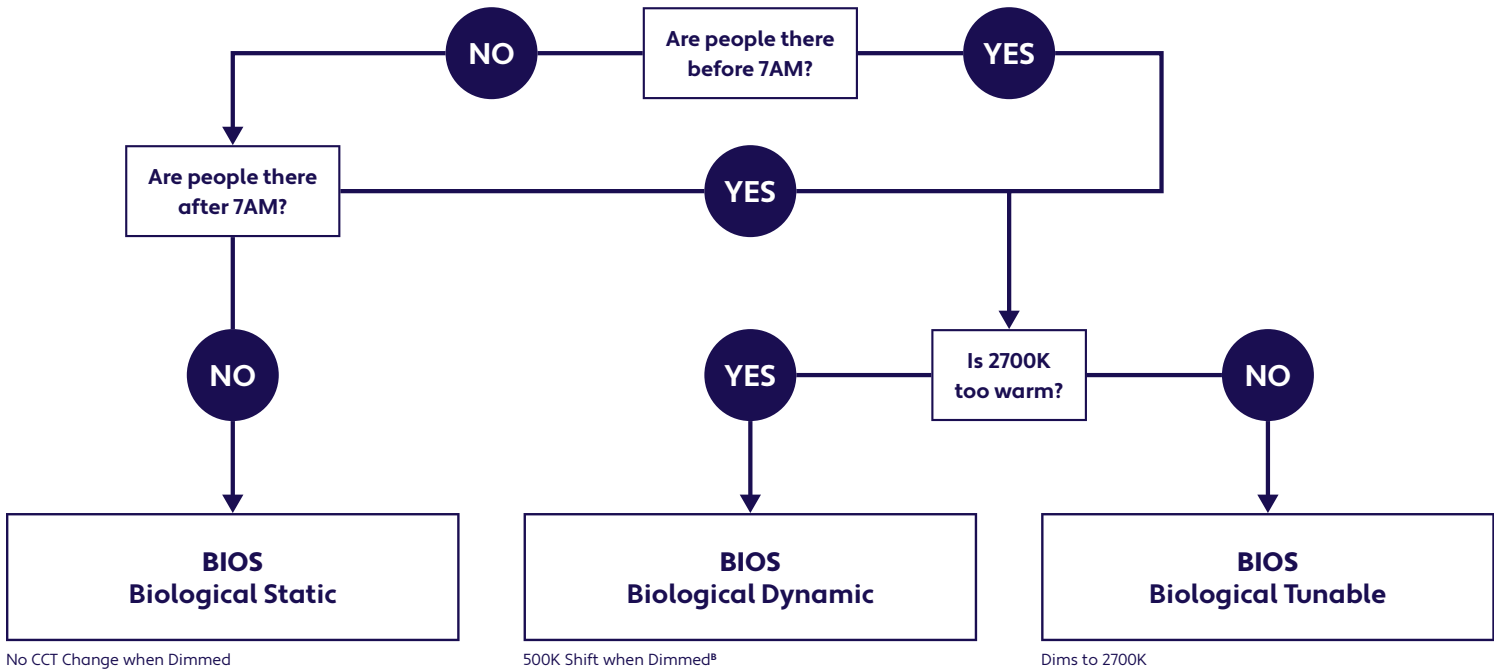
### DELIVERED MELANOPIC RATIOS

BIOS Solution / Nominal CCT / Product Code	Spectral Mode	CRI	R9	Daytime Spectrum Melanopic Ratio* (M/P)	
				m-EER	m-DER
BIOS Biological Static: 3500K Daytime (BIOS-BS-35K)	Daytime Solution	80+	> 90	≥ 0.80	≥ 0.72
BIOS Biological Dynamic: 3500K Daytime - 3000K Evening (BIOS-BD-35K-30K)	Daytime + Evening Solution	80+	> 90	≥ 0.70	≥ 0.63
BIOS Biological Tunable: 3500K Daytime - 2700K Evening (BIOS-BT-35K-27K)	Daytime + Evening Solution	80+	> 90	≥ 0.80	≥ 0.72

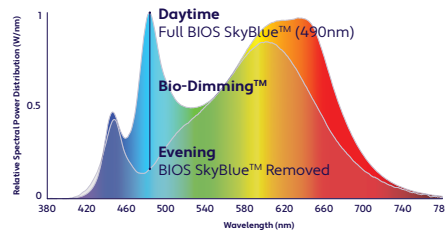
\*Melanopic ratios are provided in two forms: (m-EER) which is calculated using the WELL v2 methodology and the corresponding CIE melanopic Daylight Equivalent Ratio, (m-DER).

### CHOOSING YOUR BIOS SOLUTION

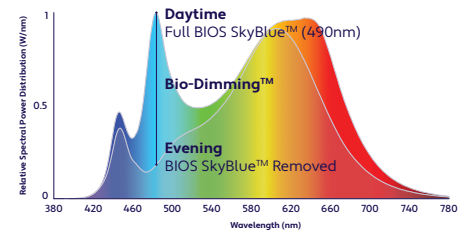
ALUZ offers four different BIOS Circadian LED Solutions – Biological Static, Biological Dynamic, and Biological Tunable White. Use the decision tree below to identify when and where to use BIOS Wellness LED Lighting Solutions .



**Daytime Solution**  
(Offices, Medical / Dental Offices)  
Spaces in operation during daytime hours, between 7AM and 7PM.



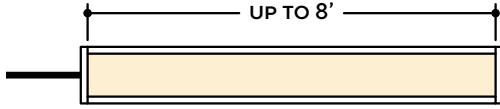
**Daytime + Evening Solution**  
(Hospitals)  
Spaces in operation overnight, after 7PM and before 7AM.  
CCT color shift in the evening not preferred.  
(<sup>B</sup>3000K dims to 2700K)



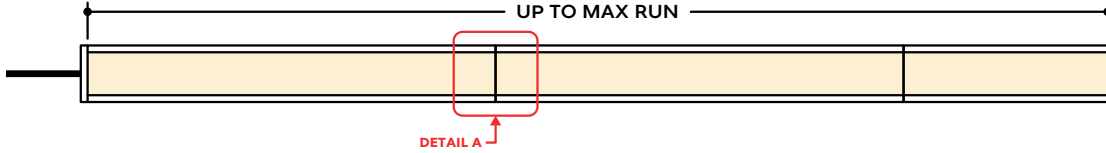
**Daytime + Evening Solution**  
(Offices, Shiftwork)  
Spaces in operation overnight, after 7PM and before 7AM and people do not sleep there.  
CCT color shift in the evening not preferred.

## DESIGN GUIDELINES

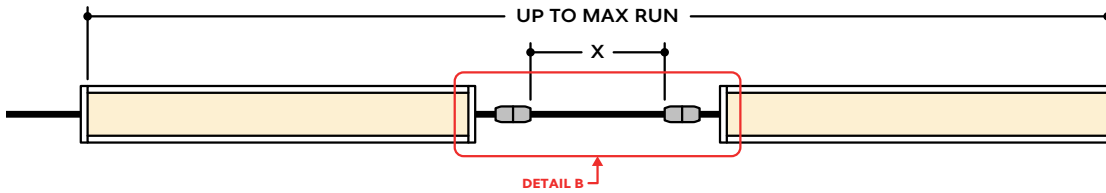
### Individual Fixture



### Continuous Run (Dry Location)



### Runs with Continuous Connector (Dry Location)

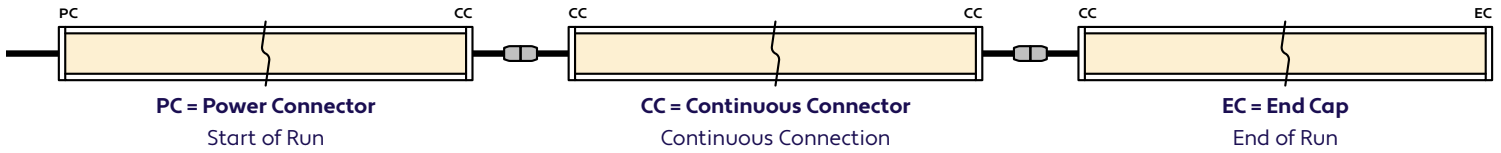


## KEY

- Detail A** **Continuous Connection (Dry Location):** Luminaire segments connect using pins, leaving no gaps between segments, with a mounting clip holding the two segments together. Refer to installation instructions for additional information.
- Detail B** **Dry Continuous Connector:** Used to span a corner or traverse a gap, corner, or obstacle in a dry location installation area.

**Note:** Drawings not to scale. Product may differ from examples shown.

## CONNECTION SEQUENCE

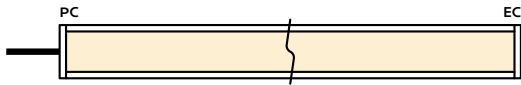


- Specifying a layout is not required to place an order.
- Configuration code applies to full length ordered and will be built per the Continuous Run models on Design Guidelines.
- Connector type subject to change based on availability and listing. Refer to Design Guidelines for details.

## HOW TO SPECIFY CONFIGURATIONS

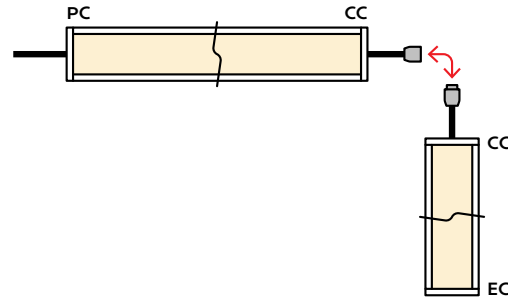
### Example: 20' Straight Run

- 1x A1-ZUCO-IND-BIOS-CL-NA-BS-35K-10W-10V-DRY-UNV-9'-PC-EC



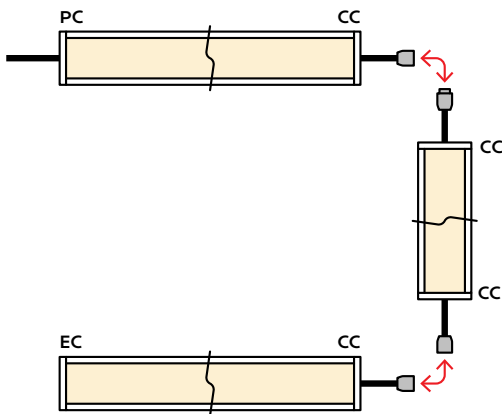
### Example: 25' L-Shaped Run

- 1x A1-ZUCO-IND-BIOS-CL-NA-BS-35K-10W-10V-DRY-UNV-6'-PC-CC
- 1x A1-ZUCO-IND-BIOS-CL-NA-BS-35K-10W-10V-DRY-UNV-7'-CC-EC



### Example: 30' U-Shaped Run

- 1x A1-ZUCO-IND-BIOS-CL-NA-BS-35K-10W-10V-DRY-UNV-6'-PC-CC
- 1x A1-ZUCO-IND-BIOS-CL-NA-BS-35K-10W-10V-DRY-UNV-9'-CC-CC
- 1x A1-ZUCO-IND-BIOS-CL-NA-BS-35K-10W-10V-DRY-UNV-6'-CC-EC



### Example: 28' Rectangle Shaped Run

- 1x A1-ZUCO-IND-BIOS-CL-NA-BS-35K-10W-10V-DRY-UNV-5'-PC-CC
- 1x A1-ZUCO-IND-BIOS-CL-NA-BS-35K-10W-10V-DRY-UNV-3'-CC-CC
- 1x A1-ZUCO-IND-BIOS-CL-NA-BS-35K-10W-10V-DRY-UNV-5'-CC-CC
- 1x A1-ZUCO-IND-BIOS-CL-NA-BS-35K-10W-10V-DRY-UNV-3'-CC-EC

