

### GENERAL FEATURES

<b>Applications</b>	Under-Cabinet and Indirect Lighting
<b>Lens</b>	50% Semi-Frosted or 100% Frosted
<b>Length</b>	Built to Order (1'-6" Minimum Length 2'-0" Minimum Length if DMX or DALI Dimming) See <b>Length Restrictions</b> Table for details
<b>Construction</b>	Aluminum Extrusion
<b>Weight</b>	1.22 lbs per foot
<b>Mounting</b>	Mounting Channel
<b>Listing</b>	Dry or Damp Location UL1598, CSA C22.2#250.0 UL8750, CSA250 UL2108, 67.1.9, 60.4, CSA C22.2 #9
<b>Driver</b>	Integral (Consult factory for remote driver options)
<b>Temperature Ratings</b>	Operating / Startup: -20° to 48°C (-4° to 120°F) Storage: -40° to 76°C (-40° to 170°F)
<b>Installation Link</b>	

### END VIEWS / DIMENSIONS



### MINIMUM & MAXIMUM RUNS

Wattage	1.5W	2W	3W	4W	5W	6W	8W	10W	12W
<b>0-10V &amp; DALI Minimum Run</b>	4'	3'	2'	2'	2'	1'	1'	1'	1'
<b>0-10V &amp; DALI Maximum Run</b>	39'	27'	19'	14'	11'	9'	7'	6'	5'
<b>DMX Minimum Run</b>	4'	3'	2'	2'	2'	1'	1'	1'	1'
<b>DMX Maximum Run</b>	26'	18'	13'	9'	8'	6'	4'	4'	3'

### ELECTRICAL

<b>Dimming</b>	0-10V, DMX, DALI
<b>Luminaire Voltage</b>	120V - 277V (UNV)

### SPECIFY PRODUCT CODE | CHOOSE FROM DROP DOWNS

Series	Lens / Optics	Finish	BIOS LED	Watts per Foot	Dimming	Feed Point	Listing	Luminaire Voltage <sup>7</sup>	Rocker Switch <sup>8</sup>	Occ. Sensor <sup>8</sup>	Luminaire Length
<b>A1-ZADY-STN-BIOS</b>											
<b>UNV</b>											
ZADY Standard BIOS Illuminated (A1-ZADY-STN-BIOS)	50% Semi-Frosted Lens (SF)	Natural Silver* (NA)	BIOS Biological Static: 3500K Daytime* <sup>2</sup> (BS-35K)	1.5 Watts (1.5W) 234 Lumens / ft* <sup>5</sup> 2 Watts (2W) 312 Lumens / ft* <sup>5</sup>	0-10V (10V)	End Feed (EF)	Indoor (DRY)	120 - 277V Line Voltage (UNV)	Rocker Switch Left (RWL)	Sensor Left (OCSL)	Specify Length in Feet & Inches
		Satin (SA)		3 Watts (3W) 468 Lumens / ft* <sup>5</sup>	DALI (DALI)	Bottom Feed (BF)	Outdoor (DAMP)		Rocker Switch Center (RWC)	Sensor Center (OCS)	
	100% Frosted Lens (F)	Silver (SR)	BIOS Biological Dynamic: 3500K Daytime - 3000K Evening* <sup>3</sup> (BD-35K-30K)	4 Watts (4W) 624 Lumens / ft* <sup>5</sup> 5 Watts (5W) 780 Lumens / ft* <sup>5</sup> 6 Watts (6W) 936 Lumens / ft* <sup>5</sup>	DMX-512 (DMX)	Side Feed (SF)		Rocker Switch Right (RWR)	Sensor Right (OCSR)		
		White (WH)		8 Watts (8W) 1248 Lumens / ft* <sup>5</sup> 10 Watts (10W) 1560 Lumens / ft* <sup>5</sup> 12 Watts (12W) 1872 Lumens / ft* <sup>5</sup>				No Feed* <sup>6</sup> (NF)	Leave Blank for None		Leave Blank for None
		Anti-Microbial White (AWH)	BIOS Biological Tunable: 3500K Daytime - 2700K Evening* <sup>4</sup> (BT-35K-27K)								
		Black (BK)									
		Anti-Microbial Black (ABK)									

\*1 Default finish is Natural Silver (NA) if left blank.  
 \*2 BIOS Biological Static available in standard 3500K Daytime CCT. Consult factory for other color temperature options.  
 \*3 BIOS Biological Dynamic available in standard 3500K Daytime - 3000K Evening CCT gamut. Consult factory for other color temperature options.  
 \*4 BIOS Biological Tunable available in standard 3500K Daytime - 3000K Evening CCT gamut. Consult factory for other color temperature options.  
 \*5 Lumens per Foot based on 35K CCT LED. **Example:** 155 Lumens x 10 Watts = 1550 Initial Lumens per Foot.  
 \*6 No Feed: Power is fed through the back or bottom of luminaire by drilling proper sized hole for conduit.  
 \*7 Integral Drivers are sized based on wattage per length. **Example:** 3' x 10 Watts per Foot = 30 Watts. Driver will be sized based on 30 Watts.  
 \*8 Rocker Switch and Occupancy Sensor must be in different locations. **Example:** Switch and Sensor cannot both be center.



### LAMP FEATURES

Lamp Type	BIOS SkyBlue™ LEDs
CRI	> 80
Efficacy*	156 Lumens per Watt

Note: Efficacy is based on Biological Static (BIOS-BS-35K) with Clear Lens (CL).

### LAMP SPECIFICATIONS

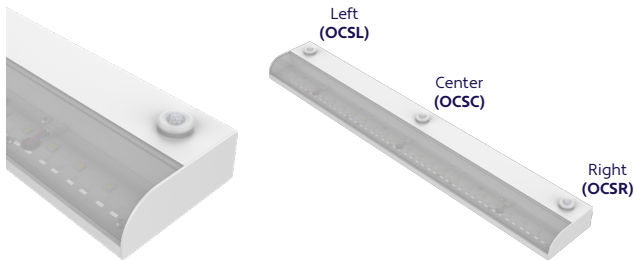
Lamp Number	Description	Efficacy (Lumens per Watt)	L70 LED Life
BIOS-BS-35K	Biological Static: 3500K Daytime	156	
BIOS-BD-35K-30K	Biological Dynamic: 3500K Daytime - 3000K Evening	156	60,000 hrs.
BIOS-BT-35K-27K	Biological Tunable: 3500K Daytime - 2700K Evening	156	

Note: Efficacy is based on 35K CCT LED with Clear Lens (CL).

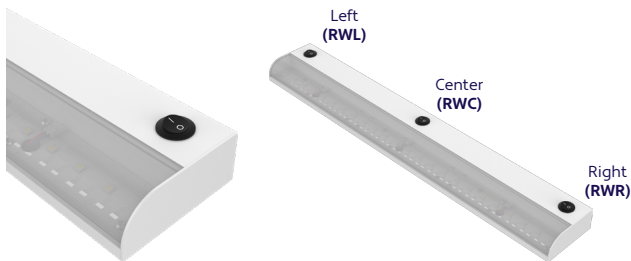
Note: To calculate Lumens per Foot, multiply Efficacy by Watts per Foot.

Example: 156 Lumens per Watt x 4 Watts per Foot = 624 Lumens per Foot.

### ADD-ONS (Specified in Product Code)



Occupancy Sensor (OCSX) X = Specify Location: Left, Center, or Right



Rocker Switch (RWX) X = Specify Location: Left, Center, or Right

### LENS / OPTICS APPEARANCE

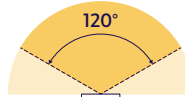


50% Semi-Frosted Lens (SF)  
Slight Diode Image  
0% Loss Factor



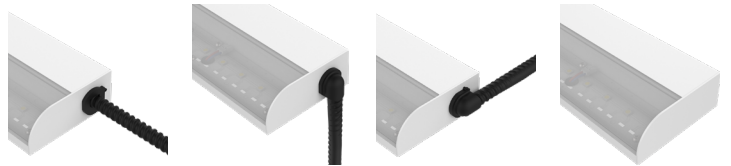
100% Frosted Lens (F)  
No Diode Image: Line of Light  
15.6% Loss Factor

### BEAM ANGLE



120° x 120° Beam

### FEED POINTS



End Feed (EF)

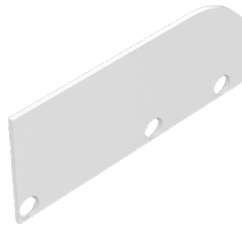
Bottom Feed (BF)

Side Feed (SF)

No Feed (NF)

Add the following measurement to the overall length of luminaire:  
EF: 0.15", BF: 0.55", SF: 0.55"

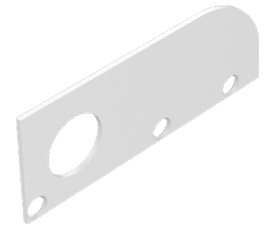
### END CAPS (Sold Separately)



End Cap (AI-ZADY-STN-EC)

Part #	Qty.
AI-ZADY-STN-EC	

Note: Use 1 End Cap for each terminus. Suitable for both left and right side.



End Cap with Hole (AI-ZADY-STN-EC-H)

Part #	Qty.
AI-ZADY-STN-EC-H	

Note: Use 1 End Cap with Hole for each terminus where conduit (by others) will be brought into the luminaire. Hole measures Ø 3/4". Suitable for both left and right side.

### POWER CONNECTORS (Sold Separately)



Dry Power Connector with Left End Cap  
(Biological Static LEDs Only)  
**(A1-ZADY-STN-BIOS-PC-BS-ECL-DRY-X)**  
X = Specify Cable Length, 6' Default

Part #	Length	Qty.
A1-ZADY-STN-BIOS-PC-BS-ECL-DRY-	6'	
A1-ZADY-STN-BIOS-PC-BS-ECL-DRY-		

**Note:** Use 1 Dry Power Connector with Left End Cap for each dry location power lead on the left side.



Dry Power Connector with Left End Cap  
(Biological Dynamic LEDs Only)  
**(A1-ZADY-STN-BIOS-PC-BD-ECL-DRY-X)**  
X = Specify Cable Length, 6' Default

Part #	Length	Qty.
A1-ZADY-STN-BIOS-PC-BD-ECL-DRY-	6'	
A1-ZADY-STN-BIOS-PC-BD-ECL-DRY-		

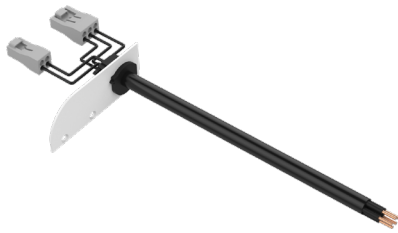
**Note:** Use 1 Dry Power Connector with Left End Cap for each dry location power lead on the left side.



Dry Power Connector with Left End Cap  
(Biological Tunable LEDs Only)  
**(A1-ZADY-STN-BIOS-PC-BT-ECL-DRY-X)**  
X = Specify Cable Length, 6' Default

Part #	Length	Qty.
A1-ZADY-STN-BIOS-PC-BT-ECL-DRY-	6'	
A1-ZADY-STN-BIOS-PC-BT-ECL-DRY-		

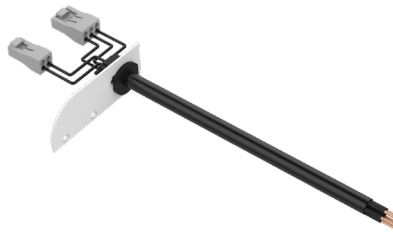
**Note:** Use 1 Dry Power Connector with Left End Cap for each dry location power lead on the left side.



Dry Power Connector with Right End Cap  
(Biological Static LEDs Only)  
**(A1-ZADY-STN-BIOS-PC-BS-ECR-DRY-X)**  
X = Specify Cable Length, 6' Default

Part #	Length	Qty.
A1-ZADY-STN-BIOS-PC-BS-ECR-DRY-	6'	
A1-ZADY-STN-BIOS-PC-BS-ECR-DRY-		

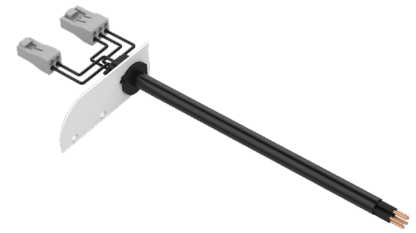
**Note:** Use 1 Dry Power Connector with Right End Cap for each dry location power lead on the right side. Standard Power Connector.



Dry Power Connector with Right End Cap  
(Biological Dynamic LEDs Only)  
**(A1-ZADY-STN-BIOS-PC-BD-ECR-DRY-X)**  
X = Specify Cable Length, 6' Default

Part #	Length	Qty.
A1-ZADY-STN-BIOS-PC-BD-ECR-DRY-	6'	
A1-ZADY-STN-BIOS-PC-BD-ECR-DRY-		

**Note:** Use 1 Dry Power Connector with Right End Cap for each dry location power lead on the right side. Standard Power Connector.

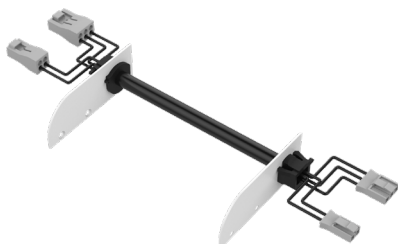


Dry Power Connector with Right End Cap  
(Biological Tunable LEDs Only)  
**(A1-ZADY-STN-BIOS-PC-BT-ECR-DRY-X)**  
X = Specify Cable Length, 6' Default

Part #	Length	Qty.
A1-ZADY-STN-BIOS-PC-BT-ECR-DRY-	6'	
A1-ZADY-STN-BIOS-PC-BT-ECR-DRY-		

**Note:** Use 1 Dry Power Connector with Right End Cap for each dry location power lead on the right side. Standard Power Connector.

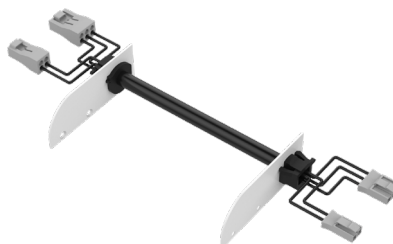
### JUMPER CABLES (Sold Separately)



Dry Jumper Cable with End Caps  
(Biological Static LEDs Only)  
**(A1-ZADY-STN-BIOS-JC-BS-EC-DRY-X)**  
X = Specify Cable Length, 6" Default

Part #	Length	Qty.
A1-ZADY-STN-BIOS-JC-BS-EC-DRY-	6"	
A1-ZADY-STN-BIOS-JC-BS-EC-DRY-		

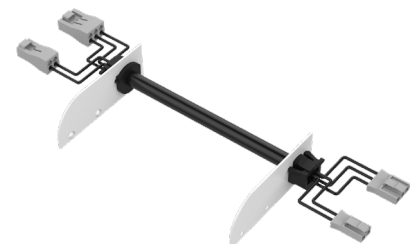
**Note:** Use 1 Dry Jumper Cable with End Caps for each instance where the run will transverse a corner or obstacle.



Dry Jumper Cable with End Caps  
(Biological Dynamic LEDs Only)  
**(A1-ZADY-STN-BIOS-JC-BD-EC-DRY-X)**  
X = Specify Cable Length, 6" Default

Part #	Length	Qty.
A1-ZADY-STN-BIOS-JC-BD-EC-DRY-	6"	
A1-ZADY-STN-BIOS-JC-BD-EC-DRY-		

**Note:** Use 1 Dry Jumper Cable with End Caps for each instance where the run will transverse a corner or obstacle.



Dry Jumper Cable with End Caps  
(Biological Tunable LEDs Only)  
**(A1-ZADY-STN-BIOS-JC-BT-EC-DRY-X)**  
X = Specify Cable Length, 6" Default

Part #	Length	Qty.
A1-ZADY-STN-BIOS-JC-BT-EC-DRY-	6"	
A1-ZADY-STN-BIOS-JC-BT-EC-DRY-		

**Note:** Use 1 Dry Jumper Cable with End Caps for each instance where the run will transverse a corner or obstacle.

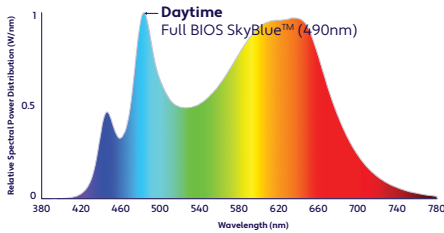
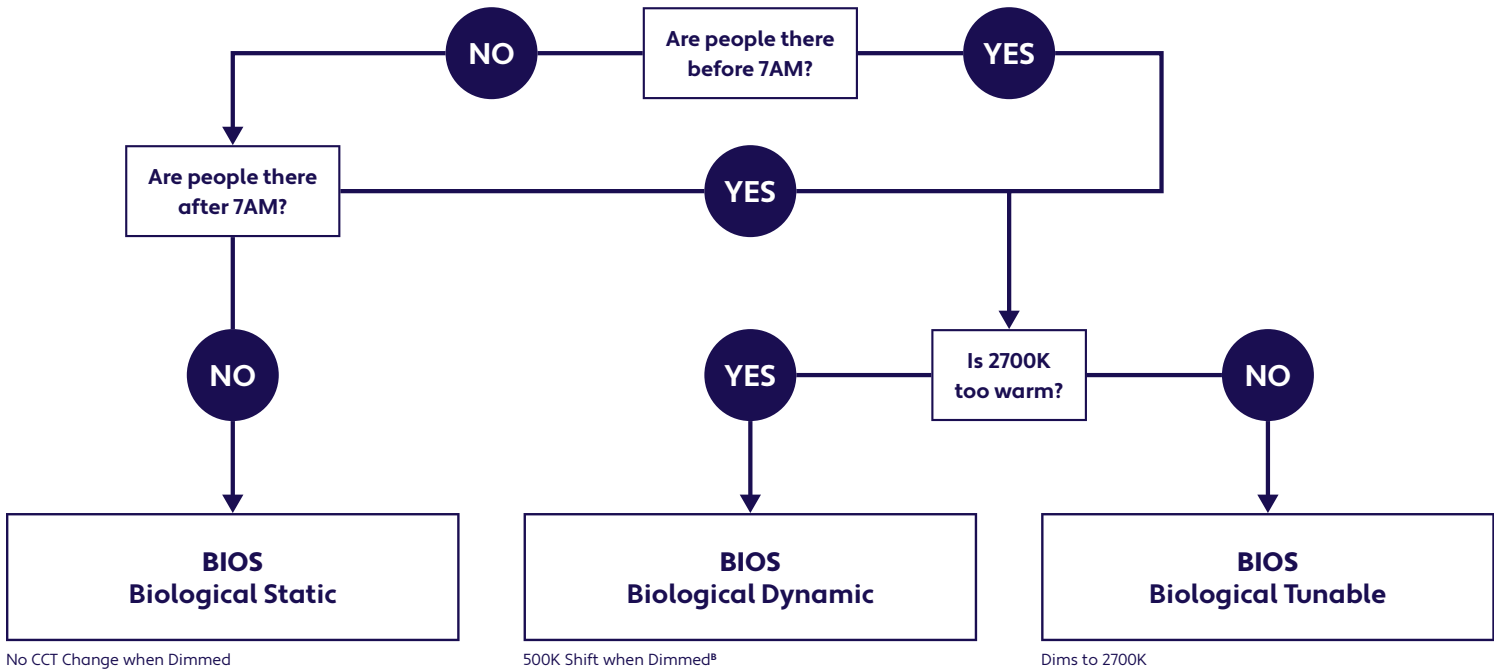
### DELIVERED MELANOPIC RATIOS

BIOS Solution / Nominal CCT / Product Code	Spectral Mode	CRI	R9	Daytime Spectrum Melanopic Ratio* (M/P)	
				m-EER	m-DER
BIOS Biological Static: 3500K Daytime (BIOS-BS-35K)	Daytime Solution	80+	> 90	≥ 0.80	≥ 0.72
BIOS Biological Dynamic: 3500K Daytime - 3000K Evening (BIOS-BD-35K-30K)	Daytime + Evening Solution	80+	> 90	≥ 0.70	≥ 0.63
BIOS Biological Tunable: 3500K Daytime - 2700K Evening (BIOS-BT-35K-27K)	Daytime + Evening Solution	80+	> 90	≥ 0.80	≥ 0.72

\*Melanopic ratios are provided in two forms: (m-EER) which is calculated using the WELL v2 methodology and the corresponding CIE melanopic Daylight Equivalent Ratio, (m-DER).

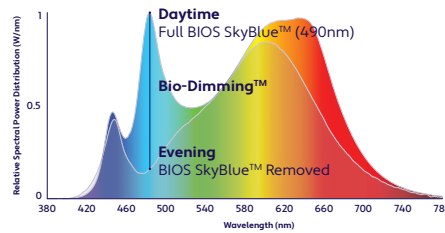
### CHOOSING YOUR BIOS SOLUTION

ALUZ offers four different BIOS Circadian LED Solutions – Biological Static, Biological Dynamic, and Biological Tunable White. Use the decision tree below to identify when and where to use BIOS Wellness LED Lighting Solutions .



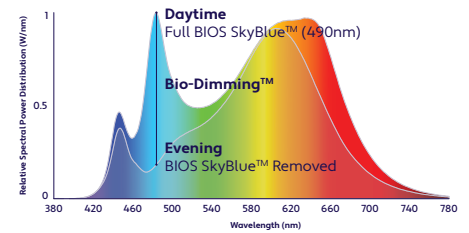
**Daytime Solution**  
(Offices, Medical / Dental Offices)

Spaces in operation during daytime hours, between 7AM and 7PM.



**Daytime + Evening Solution**  
(Hospitals)

Spaces in operation overnight, after 7PM and before 7AM. CCT color shift in the evening not preferred.  
(<sup>B</sup>3000K dims to 2700K)

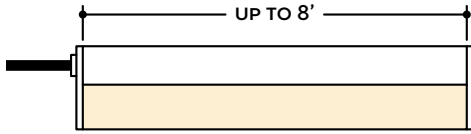


**Daytime + Evening Solution**  
(Offices, Shiftwork)

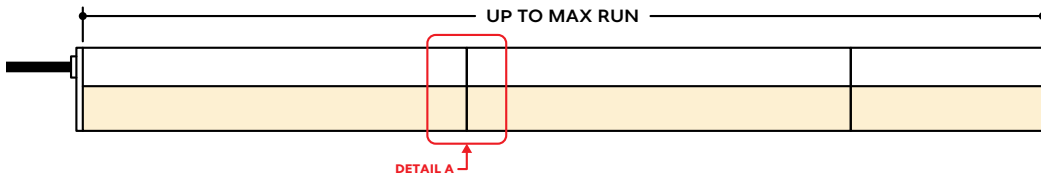
Spaces in operation overnight, after 7PM and before 7AM and people do not sleep there. CCT color shift in the evening not preferred.

## DESIGN GUIDELINES

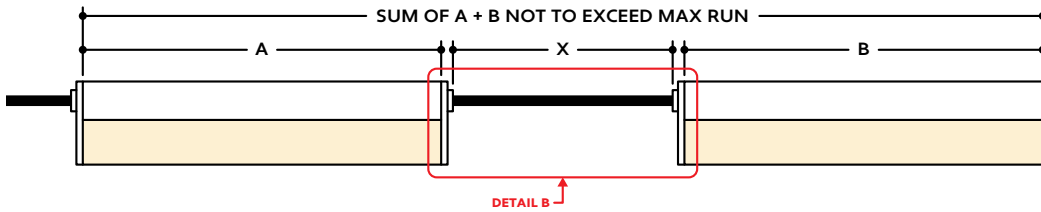
### Individual Fixture



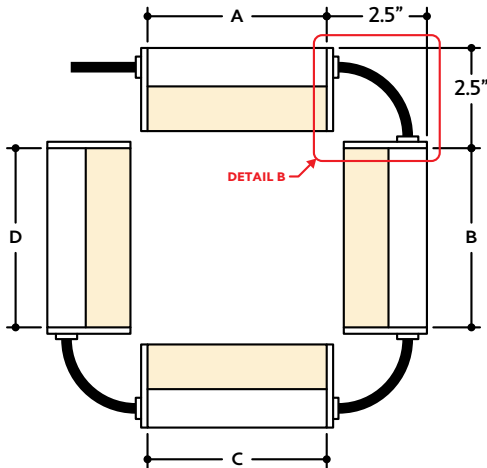
### Continuous Run



### Run with Jumper Cable



### Run with Square Layout



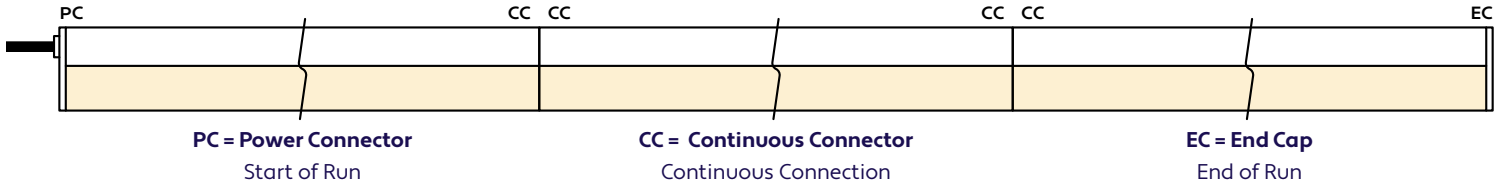
## KEY

- Detail A** **Continuous Connection (Dry Location):** Luminaire segments connect using internal continuous connectors, leaving no gaps between segments. Refer to installation instructions for additional information.
- Detail B** **Jumper Cable:** Used to span a corner or traverse a gap or obstacle in the installation area.

**Note:** Drawings not to scale. Product may differ from examples shown.

## CONNECTION SEQUENCE

### Dry Location

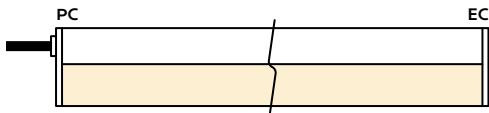


- Specifying a layout is not required to place an order.
- Configuration code applies to full length ordered and will be built per the Continuous Run models on Design Guidelines.
- Connector type subject to change based on availability and listing. Refer to Design Guidelines for details.

## HOW TO SPECIFY CONFIGURATIONS

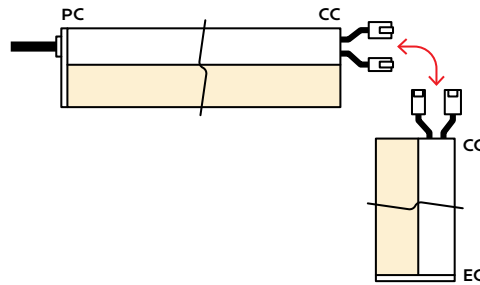
### Example: 20' Straight Run

- 1x A1-ZADY-STN-BIOS-SF-WH-BS-35K-10W-10V-EF-DRY-UNV-20'-PC-EC



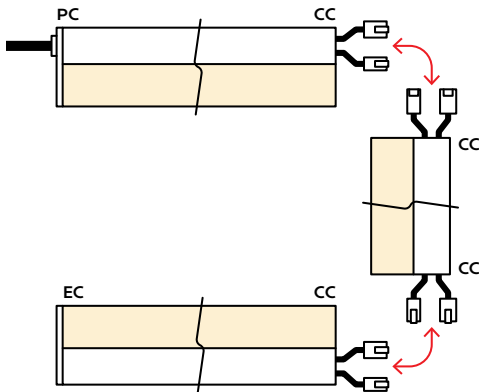
### Example: 25' L-Shaped Run

- 1x A1-ZADY-STN-BIOS-SF-WH-BS-35K-10W-10V-EF-DRY-UNV-12'-PC-CC
- 1x A1-ZADY-STN-BIOS-SF-WH-BS-35K-10W-10V-EF-DRY-UNV-13'-CC-EC



### Example: 30' U-Shaped Run

- 1x A1-ZADY-STN-BIOS-SF-WH-BS-35K-10W-10V-EF-DRY-UNV-6'-PC-CC
- 1x A1-ZADY-STN-BIOS-SF-WH-BS-35K-10W-10V-EF-DRY-UNV-18'-CC-CC
- 1x A1-ZADY-STN-BIOS-SF-WH-BS-35K-10W-10V-EF-DRY-UNV-6'-CC-EC



### Example: 28' Rectangle Shaped Run

- 1x A1-ZADY-STN-BIOS-SF-WH-BS-35K-10W-10V-EF-DRY-UNV-11'-PC-CC
- 1x A1-ZADY-STN-BIOS-SF-WH-BS-35K-10W-10V-EF-DRY-UNV-3'-CC-CC
- 1x A1-ZADY-STN-BIOS-SF-WH-BS-35K-10W-10V-EF-DRY-UNV-11'-CC-CC
- 1x A1-ZADY-STN-BIOS-SF-WH-BS-35K-10W-10V-EF-DRY-UNV-3'-CC-EC

